

Grand Cru



COMPRESSOR WINE COOLER INSTRUCTION MANUAL

FOR MODEL NUMBERS

GC 320

*This manual contains important information including **safety and installation instructions** for your appliance. Please read it carefully before use and follow all safety information & instructions. It is recommended to keep this manual for easy reference so that you can be familiar with the operation of your appliance.*

Contents

1- Construction of wine cabinet-----	3
2- Important safety instructions-----	4
3- Connecting to mains supply-----	5
4- Wine cabinet installation-----	6
5- Temperature setting-----	7
6- Layout and storage-----	9
7- Installation of Handle-----	12
8- Routine maintenance-----	13
9- Operating problems / Trouble Shooting-----	15
10- Technical characteristics-----	17
11- Warranty Registration-----	18

Your Grand CRU Warranty Registration Form

Thank you for purchasing a Grand Cru Wine Cooler from Clever Home Products Pty Ltd. (CHP)
CHP provides a 1 year warranty on the Grand Cru range of Wine Coolers.

To register your wine cooler **NOW** for warranty, and to allow us to provide you with the best possible after-sales service, please fill out the following information and return this to,
Clever Home Products Pty Ltd, Level 5, 15-19 Claremont St, South Yarra, Victoria 3141.

To make a warranty claim, please email or mail (to the address above) your details and a brief description of the fault to matthew@cleverhomeproducts.com.au for our immediate attention.

Customer's Name: _____

Address: _____

State: _____ Postcode: _____

Tel: (Home) _____ (Mobile) _____ Email: _____

Model Purchased: _____ Serial No.: _____

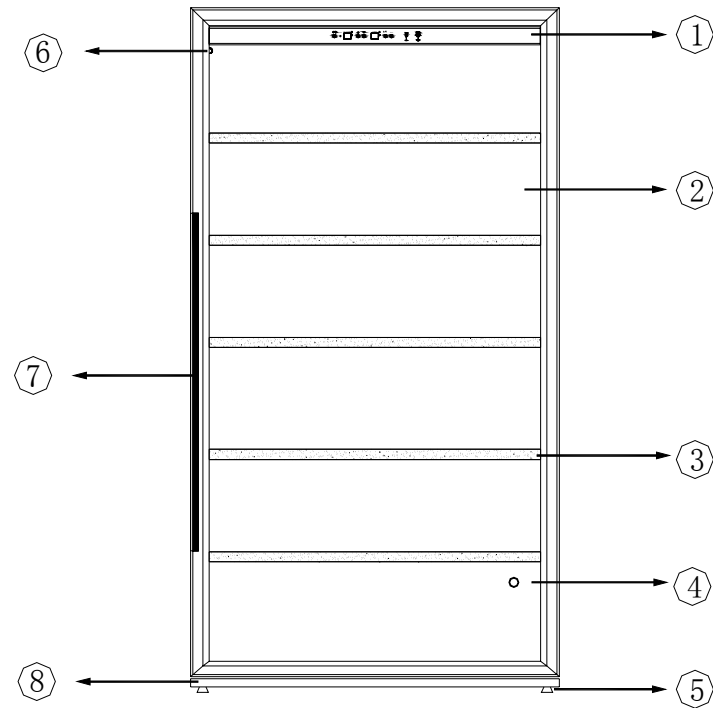
Date of Purchase: _____

Invoice/Receipt No: _____

This warranty does not cover the following:

- 1. Any damages caused from improper use or not used in accordance with the instruction manuals.
- 2. Damage caused by connecting your product to the wrong power source/supply.
- 3. Incorrect installation or modifications made during installation or use of the product.
- 4. Removing screws or otherwise opening the outer case will void the warranty.
- 5. Any damages resulting from poor handling or moving of the product, misuse, fire or water damage etc.
- 6. Failure to maintain the product as per the Instruction Manual.
- 7. Problems caused by incorrect or inadequate venting of the product.

1. Construction of Wine Cabinet



- | | |
|---------------------|-------------------------------|
| (1) Control Panel | (2) Cabinet body |
| (3) Storage Shelf | (4) Free Ventilation Hole |
| (5) Adjustable Feet | (6) Activated Charcoal Filter |
| (7) Door Handle | (8) Free Ventilation Base |

2. Important safety instructions

Before using the appliance, please properly position and install it as described in this manual. To avoid the risk of fire, electrical shock, or injury when using the appliance, follow these basic precautions:


- The appliance is intended to be used exclusively for the storage of wine.
- Make sure the voltage/current marked on the rating label corresponds with your supply voltage. Plug into a 3-pin outlet and avoid the use of an adaptor or extension lead if possible.
- It is recommended that a separate circuit, serving only your appliance be provided.
- Never clean the appliance parts with flammable fluids which may create a fire hazard or explosion.
- Do not store or use gasoline or other flammable vapours and liquids in the vicinity of the appliance.
- Do not connect or disconnect the electric plug when your hands are wet.
- Unplug the appliance or disconnect power before cleaning, maintenance or servicing. Failure to do so can result in electrical shock.
- Do not attempt to repair or replace any part of the appliance. All servicing should be referred to a qualified Clever Home Products technician.
- It is recommended that 2 people move the appliance to avoid any damage to the appliance or personal injury .
- To ensure proper ventilation for the appliance, the front of the unit must be completely unobstructed. Locate the unit away from direct sunlight and sources of heat (stove, heater, radiator, etc.).
- It is important for the appliance to be leveled in order to work properly. You may adjust the appliance's feet to level it.
- This appliance intended for use by persons with sufficient experience and knowledge of electrical appliances. Any other persons (including children) should be supervised or given instruction concerning use of the appliance by a person responsible for their safety.

10—Technical Characteristics:

MODEL	GC 320
Climate Type	N
Electricity Protection Grade	I
Volume(L)	760
Refrigerant (g)	142
Foam Material	C-pentane
Nominal Voltage(V)	220V-240V
Voltage frequency(Hz)	50Hz
Nominal current(A)	1.6A
Rated Input Power(W)	245W
Power Consumption (kw.h/24h)	1.57
Noise (dB)	48
GW(Kg)	156
NW(Kg)	147
Body Size(mm)	800x690x2015

If you feel the appliance is not working properly, follow these instructions to try to see if you can solve the problem simply by yourself before calling for service.

No.	PROBLEM	PROBLEM POSSIBLE CAUSE / MEASURE
1	The wine cooler does not operate	Not plugged in. The appliance is turned off. The circuit breaker has tripped or a blown fuse.
2	The wine cooler is not cold enough	Check the temperature control setting. External environment may require a higher setting. The door is opened too frequently. The door is not closed completely. The door gasket does not seal properly.
3	Automatically turn-on and turn-off frequently	The room temperature is hotter than normal. A large amount of contents has been added to the wine cooler. The door is opened too frequently. The door is not closed completely. The temperature control is not set correctly. The door gasket does not seal properly.
4	The lighting does not work	Not plugged in. The circuit breaker has tripped or a blown fuse. The lighting is turned off.
5	Too much vibration	Check to assure that the appliance is level. Check to assure no parts inside the cabinet or in the compressor chamber are loose.
6	The wine cooler seems to make too much noise	The rattling noise may come from the flow of the refrigerant, which is normal. As each cycle ends, you may hear gurgling sounds caused by the flow of refrigerant. Contraction and expansion of the inside walls may cause popping and crackling noises. The appliance is not level.
7	The door will not close properly.	The wine cooler is not level. The door was reversed and not properly installed. The gasket is dirty. The shelves are out of position.

- Children should be supervised to ensure that they do not play with the appliance.
 - Do not use solvent-based cleaning agents or abrasives on the interior. These cleaners may damage or discolor the interior.
 - Do not use this appliance for other than its intended purpose.
 - The use of attachments is not recommended by the manufacturer and may be hazardous.
 - **WARNING:** Do not damage the refrigerant circuit.
 - Keep ventilation openings, in the appliance enclosure or in the built-in structure, clear of obstruction.
 - Do not use electrical appliances inside the food storage compartments of the appliance, unless they are of the type recommended by the manufacturer.
 - Do not use mechanical devices or other means to accelerate the defrosting process, other than those recommended by the manufacturer.
 - When you dispose of the appliance, take off the door and leave the shelves in place so that children may not easily climb inside. Make sure the coolant circuit, particularly the heat exchanger at the back/bottom of the unit is not damaged.
- The symbol  on the product or its packaging indicates that this product is not to be handled as normal household waste and it is to be taken to a recycling collection point for electrical and electronic goods.

3. Power Supply Connection

1. Nominal voltage/Frequency: 220V-240V/50Hz;
2. Standard socket with earth connection.
3. If the power cord is damaged, or the plug does not match the socket, and the socket is not equipped with an earth connection, etc, you must have it checked or replaced by a qualified electrician to prevent any risks.
4. If the supply cord is damaged, it must be replaced by the manufacturer, its service agent or similarly qualified persons in order to avoid a hazard.

4. Wine Cabinet Installation:

1. When you receive the cabinet, make sure when you unpack it there is no flaws in its external appearance (from shocks, deformation, etc.)
2. Open the door and check all interior fittings and supplied items if are all complete (shelves, instruction, control panel, etc.) Please install it according to the following points if the shelves or shelf brackets fall off during transit.
3. Carry your wine cabinet to the final place to see if there is no problem with it after checking. Observe the following when placed:
 - a) Ensure that there is a minimum of 5cm between your wine cabinet and the left & right wall; leaving a space of at least 8cm between the back cabinet and the wall.
 - b) Position the wine cabinet on a flat level surface, if not, adjust the feet of wine cabinet to keep level.
 - c) Away from sources of heat and high humidity areas (laundry room and bathroom, etc).
 - d) Do not tilt it at an angle of more than 45° when move the cabinet. Allow a minimum 10-minute interval between transit and re-starting.
 - e) Make sure the ventilation is free if you wish to install your cabinet into a worktable, otherwise, it will reduce the effect of usage.

9-Operating Problems / Trouble Shooting

9.1 START-UP:

Compressor does not start even though the desired temperature is lower than the temperature in the room.

1. Check the wall socket by plugging in any type of electrical device, and make sure that the on/off switch is in the “I” position.
2. If the compressor still does not start after taking steps 2 and 3, contact your dealer.

9.2 DEW ON THE SURFACE OF CABINET:

The surface of wine cabinet especially the glass door will appear some frost if the cabinet is installed in a damp room. This is due to the moisture in the air coming into contact with the cabinet. Please wipe it away with dry cloth.

9.3 Liquid sound:

1. The sound of compressor when starts or stops working
2. The flowing sound of refrigerant in the refrigeration system
3. The evaporating sound of refrigerant in the evaporator

It's a normal phenomenon if appears upward sound.

9.4 Condensation formed inside the cabinet

If you are in the environment with high level of humidity or if the door of wine cabinet has been left open for a long period or opened frequently, wipe off the door and walls and leave the door closed as long as possible.

9.5

Do not dispose of electrical appliances as unsorted municipal waste, use separate collection facilities.

Contact your local government for information regarding the collection systems available. If electrical appliances are disposed of in landfills or dumps, hazardous substances can leak into the groundwater and get into the food chain, damaging your health and well-being. When replacing old appliances with new once, the retailer is legally obligated



to take back your old appliance for disposal at least for free of charge.

■ MOVING THE WINE COOLER

- Remove all items.
- Securely tape down all loose items (shelves) inside your appliance.
- Turn the adjustable leg up to the base to avoid damage.
- Tape the door shut.
- Be sure the appliance stays secure in the upright position during transportation. Also protect outside of appliance with a blanket, or similar item.

■ ENERGY SAVING TIPS

- The appliance should be located away from heat producing appliances, and away from direct sunlight.
- Ensure that the unit is adequately ventilated. Never cover air vents.
- Only open the door when necessary. Avoid leaving the door open for long periods or opening and closing the door frequently.

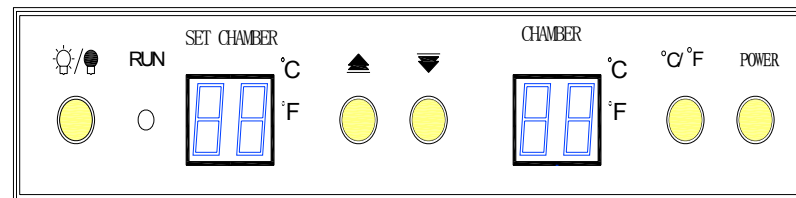
NOTE:

To assure that your wine cabinet provides long-lasting reliable performance, you should check it regularly and inform your dealer if anything unusual is found.

5. Temperature Setting

5.1.1

The temperature setting of dual temperature display wine cabinet



The digital tube on the control panel indicates the temperature, the left digital tube indicates the temperature and the temperature indicating range is 5°C~22°C (40°F-72°F), the right ones indicates the actual temperature of inner cabinet, and the range is 0~37°C(32°F-99°F)

5.1.2

The temperature setting range of cabinet is 5°C~22°C(41°F-72°F). You can reset the temperature according to your actual demands. The wine cabinet will turn on and the indicator will turn on until the desired temperature is achieved.

5.2.3

Introduction of Display Plate Function

- **POWER**
Controls the ON/OFF of the whole system.
- **°C/°F**
This button can be operated in accordance with the need of different customers to switch from Fahrenheit to Celsius. The top right corner indicator LED will illustrate when switch °C/°F
- **Light ON/OFF**
Control the ON/OFF of LED light
- **▲** Press this key to adjust the incremental set of temperature
- **▼** Press this key to adjust the reduced set of temperature
- **RUN**
LED light will illustrate when the compressor is operating, you can know the working state through the light.

- SET CHAMBER
Digital display of preset temperature
- CHAMBER
- Digital display of inner cabinet temperature

5.2.4

The control of cool circle system

The compressor will stop working when the cooling system in the cabinet reaches the presetting temperature, and re-start working until the desired temperature is achieved.

Allow a minimum 5 minute interval before re-starting.

8-Routine Maintenance

Your cabinet is easy to operate and has proven its reliability; it will provide long-lasting satisfaction if you follow the simple maintenance and cleaning operations listed below:

- Remove dust from the condenser (metal screen on the back of the cabinet) twice a year.
- Make sure the power cord is unplugged before cleaning the back of your cabinet, or before moving it.
- Clean the inside of your cabinet thoroughly once a year, after unplugging and unloading it (uses water and a mild cleaning item, then rinse carefully).

■ **CLEANING THE WINE COOLER**

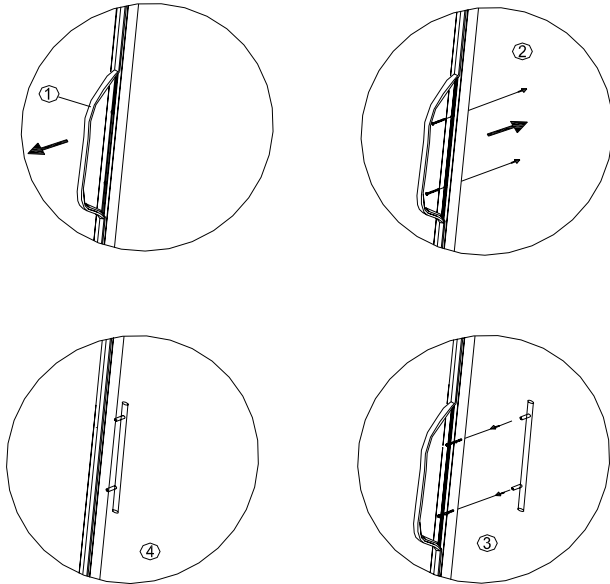
- Turn off the power, unplug the appliance, and remove all items including shelves.
- Wipe the inside surfaces with a sponge and baking soda solution. The solution should be 2 tablespoons of baking soda to 1 litre of warm water.
- Wash the shelves with a mild detergent solution. Allow wooden shelves to dry before placing back into the wine cooler.
- Wring excess water out of the sponge or cloth when cleaning area of the controls, or any electrical parts.
- Wipe the outside cabinet with warm water and mild liquid detergent. Wipe dry with a clean soft cloth.
- Do not use a steel wool or steel brush on the stainless steel. These will scratch the stainless steel and rusting may occur.

■ **POWER FAILURE**

- Most power failures are corrected within a few hours and should not affect the temperature of your appliance, if you minimize the number of door openings. If the power is going to be off for a longer period of time, you need to take the proper steps to protect your wine.

7- Installation of Handle

If you want to install the doorknob according to your actual demands, do as the following steps:



1. Unhinge the door seal in the place of installing the handle
2. Cased the screws in the appointed place
3. Fasten the door handle in the door by screwdriver
4. Refit the door seal to the relevant position

6. Layout and Storage of Wine:

6.1 Different types of layout



a) Fixed wooden shelf: capacity: 48 bottles / shelf

Max weight: 72 kg

Sliding shelf: capacity: 15 bottles / shelf

Max weight: 20 kg

No more than 8 bottle of wine every shelf

Maintain a minimum 20mm between bottle and back plate

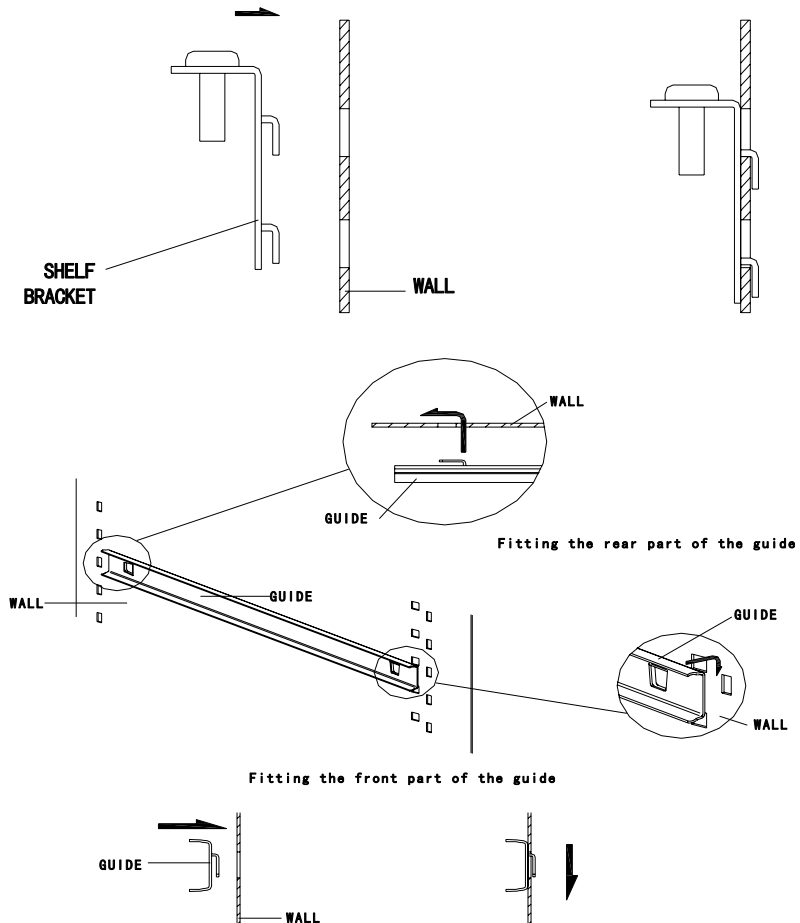


6.2 Read the following carefully if change the position of shelf:

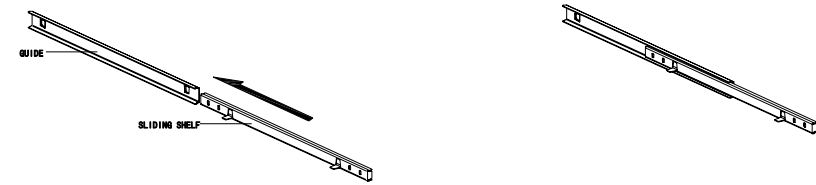
To move a sliding shelf, first remove all bottles, and then remove the sliding shelf by sliding guides from walls, while making sure not to mix up the right and left guides

Installation diagram of Sliding shelf:

Installation diagram of fixed and sliding shelves:



Then refit the sliding shelf as shown below:



6.3 The Grand Cru GC320 cabinet was designed to store a maximum number of bottles in total security, we recommend that you observe the tips below to ensure optimize loading.

- Spread your bottles out as evenly as possible over the shelves, so that weight is not concentrated in one point; also make sure your bottles do not touch the back of the cabinet, or the step at bottom.
- Also make sure that bottles are not all grouped together at the top or bottom of the cabinet.
- Observe the loading instructions provided in section 6, according to the type of storage fixtures with which your cabinet is equipped, and never stack bottles on a sliding shelf.