

Installation instructions

Gas-on-glass cooktops

CG603D, CG604D, & CG905D models

NZ AU



Fisher & Paykel

Important!

SAVE THESE INSTRUCTIONS

The models shown in this document may not be available in all markets and are subject to change at any time. For current details about model and specification availability in your country, please visit our local website listed at the end of this document or contact your local Fisher & Paykel dealer.

① SAFETY AND WARNINGS

⚠ WARNING!	
	Electrical shock hazard Before carrying out any work on the electrical section of the appliance, it must be disconnected from the mains electricity supply. Connection to a good earth wiring system is absolutely essential and mandatory. Alterations to the domestic wiring system must only be made by a qualified electrician. Failure to follow this advice may result in electrical shock or death.
⚠ WARNING!	
	Cut hazard Take care - some panel edges are sharp. Failure to use caution could result in injury or cuts.

Important safety instructions!

- Particular attention shall be given to the relevant requirements regarding ventilation.
- Read these instructions carefully before installing this product.
- Please make this information available to the person installing the appliance as it could reduce your installation costs.
- This appliance is to be installed and serviced only by an authorised person.
- Installation must comply with your local building and local gas authority codes and electricity regulations.
- Incorrect installation, for which the manufacturer accepts no responsibility, may cause personal injury or damage and could invalidate any warranty or liability claims.
- These appliances are registered in: (New Zealand) at www.ess.govt.nz and (Australia) with SAI Global at www.saiglobal.com.
- This gas appliance is suitable for connection only to the gas type for which it was set at the factory, as declared on the appliance data label. It is not convertible for use on any other gas type. If in doubt, refer to the local gas network operator or gas supplier to confirm gas type at installation site.
- Do not modify this appliance.

- Do not modify this appliance.
- Do not use or store flammable materials on or near this appliance.
- Do not spray aerosols in the vicinity of this appliance while it is in operation.
- Packing elements (eg plastic bags, polystyrene foam, staples, packing straps etc) and tools should not be left around during and after installation, especially if they are within easy reach of children, as these may cause serious injuries.

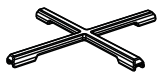
Before you install the appliance, please make sure that

- the local distribution conditions (nature of gas and pressure) and the adjustment of the appliance are compatible. For adjustment conditions for this appliance, see 'Gas rate summary'
- a suitable disconnection switch is incorporated in the permanent wiring, mounted and positioned to comply with the local wiring rules and regulations. A means of disconnection with at least a 3 mm air gap contact separation in all poles must be incorporated into the fixed wiring in accordance with the wiring rules, unless the local wiring rules allow for alternative means
- the appliance is connected to a 220V - 240V 50Hz (10 A) power supply only and earthed via the power supply cable
- there is a power outlet within reach of the power supply cable (900 mm from the centre rear of the product). This must be accessible after installation. The power supply cable should not touch any metal parts
- if the power supply cable is damaged, it is replaced only by the special cable: Part no. 534050 - Flex Terminal Block Assy NZ/AU, obtainable from authorised Fisher & Paykel Service Agents
- the supply connection point (gas shut-off valve) is accessible after installation
- the benchtop is made of a heat resistant material
- the installation complies with all the requirements of Australian and New Zealand Gas Installation Standards (AS5601, NZS5261), including that the product has to be installed so that the surface temperature of any nearby combustible surface will not exceed 65 °C above ambient. See ③ 'Clearance Dimensions'.

When you install the appliance

- We do not recommend you flush mount or seal this appliance into the bench with silicone or glue. Doing so will make future servicing difficult. Fisher & Paykel will not be liable for any costs associated with removing or replacing a sealed-in appliance, nor for repairing any damage that may be incurred by doing this.
- If installed with an approved flexible hose, the hose should not come in contact with the bottom of the appliance or any sharp edges. Flexible hose assemblies should be AS/NZS 1869 Class B or Class D certified.
- Seal exposed bare edges of the cutout with an oil-based paint or moisture-proof polyurethane to prevent possible moisture creeping between the cooktop trim and the benchtop.
- Take extreme care not to chip, crack, or break the top glass surfaces during installation. A heavy metal tool or part accidentally dropped on the glass could damage it.
- If, after following the instructions given, correct performance cannot be achieved, please contact your nearest Fisher & Paykel Authorised Service Centre, Customer Care, or contact us through our local website listed at the end of this document.

4 PARTS SUPPLIED



Small pan support (1)
(CG603D and CG605D models only)



Wok stand (1)



Fibre washers (2)



Elbow 1/2" BSP external thread (1)



Clamping brackets (4) and screws (4)



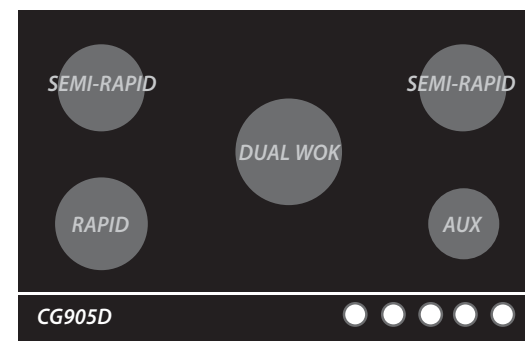
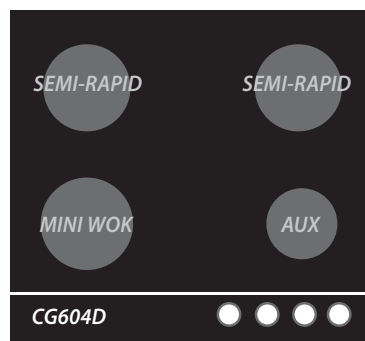
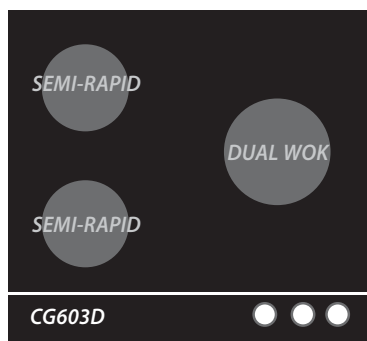
LPG test point adaptor (1)
(LPG models only)



NG regulator (1)
(NG models only)

5 GAS RATE SUMMARY

All appliances are factory set for Natural gas or LPG and are not convertible. Check the appliance data label.

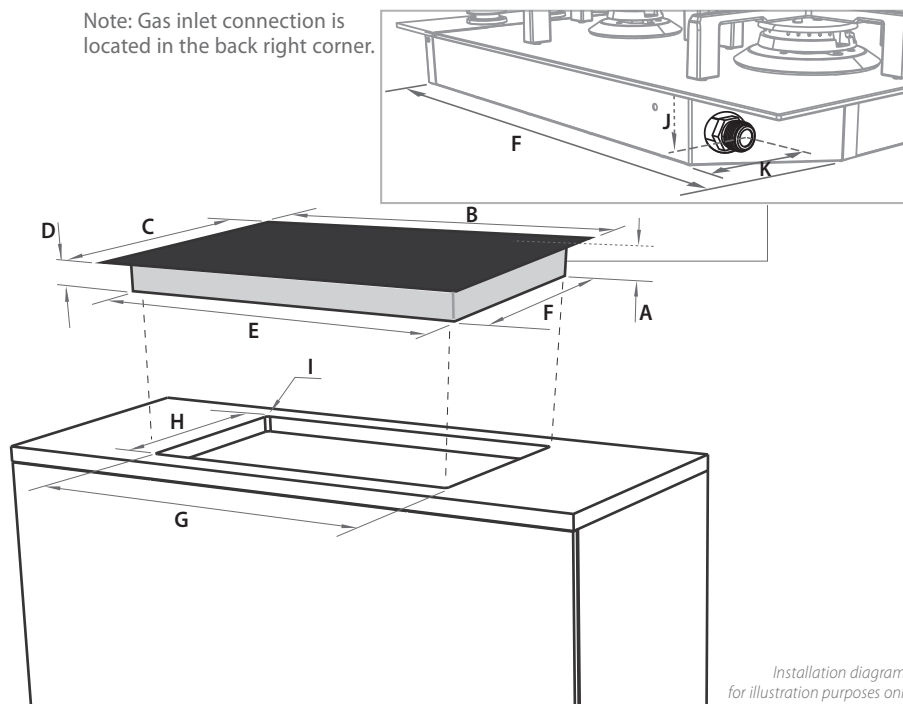


		CG603D				CG604D, CG905D									
GAS TYPE	BURNER	SEMI-RAPID		DUAL WOK		AUX		SEMI-RAPID		RAPID		MINI WOK		DUAL WOK	
		Jet size (mm)	Nominal rating (MJ/h)	Jet size (mm)	Nominal rating (MJ/h)	Jet size (mm)	Nominal rating (MJ/h)	Jet size (mm)	Nominal rating (MJ/h)	Jet size (mm)	Nominal rating (MJ/h)	Jet size (mm)	Nominal rating (MJ/h)	Jet size (mm)	Nominal rating (MJ/h)
NG	(1.00 kPa)*	1.30	8.4	1.26	16.6	0.85	3.6	1.30	8.4	1.55	11.5	1.55	11.7	1.30	18
				1.26										1.30	
				0.70										0.70	
LPG	(2.75 kPa)*	0.76	7.5	0.73	16.8	0.55	3.8	0.76	7.5	0.94	11.4	0.94	11.7	0.76	18
				0.73										0.76	
				0.50										0.50	

*Nominal pressure with the two semi-rapid burners on High.

② PRODUCT & CABINETRY DIMENSIONS

Note: Gas inlet connection is located in the back right corner.

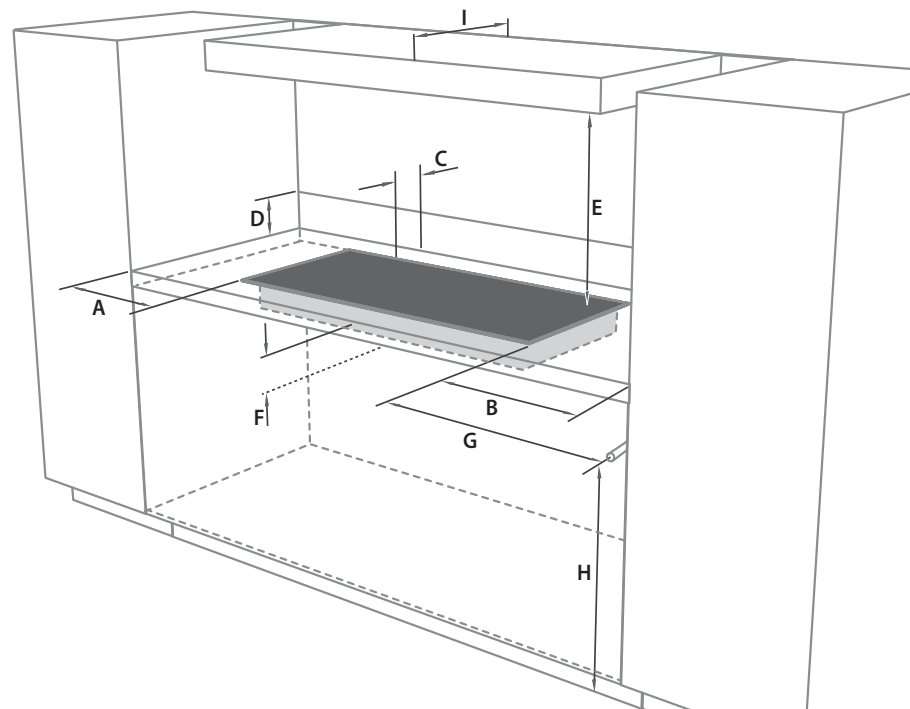


Installation diagrams
for illustration purposes only

Product and cabinetry dimensions (mm)

		CG603D	CG604D	CG905D
A	overall height of product (excluding burners, dials and pan supports)	64	64	64
B	overall width of product	600	600	900
C	overall depth of product	530	530	530
D	height of chassis (below top of bench)	59	59	59
E	width of chassis	555	555	856
F	depth of chassis	486	486	486
G	overall width of cutout	560	560	865
H	overall depth of cutout	490	490	490
I	corner radius of cutout	max. 10	max. 10	max. 10
J	distance from top of bench to centre of gas inlet on product	32	32	32
K	distance from edge of chassis to gas inlet on product	21	21	21

③ CLEARANCE DIMENSIONS



Clearances (mm)

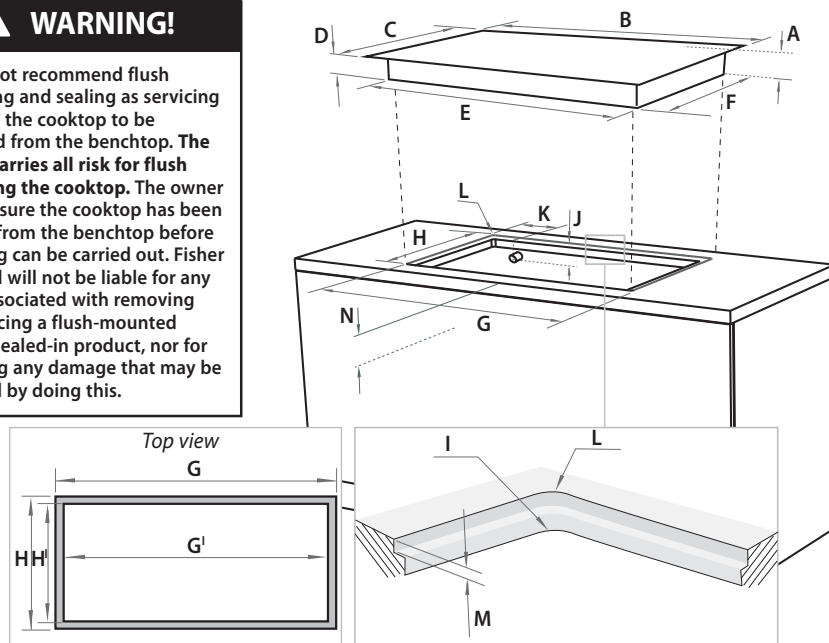
Clearances (mm)		CG603D	CG604D	CG905D
A	minimum clearance from left edge of cutout to nearest combustible surface	112	122	130
B	minimum clearance from right edge of cutout to nearest combustible surface	112	109	109
C	minimum clearance from rear edge of cutout to: nearest combustible surface	154	154	154
	nearest non-combustible surface	10	10	10
D	minimum height of non-combustible material when used on adjacent walls	150	150	150
E	minimum clearance from glass surface to: rangehood	650	650	650
	any other overhead exhaust fan	800	800	800
	downward facing combustible surface	650	650	650
	downwards-facing tiled or fire resistant surface	500	500	500
F	minimum clearance below top of benchtop to: combustible surface	70	70	70
	Fisher & Paykel oven or nearest non-combustible surface	65	65	65
G	minimum distance from right edge of cooktop to gas connection point on wall (if using a flexible hose)	250	250	250
H	distance from floor to gas connection point on wall (if using a flexible hose)	min. 800 - max. 850	min. 800 - max. 850	min. 800 - max. 850
I	maximum overall depth of overhead cabinetry	600	600	600

Note: Ensure there is an earthed power outlet within 900 mm of the centre rear of the product. The gas connector on the wall should be 800-850 mm (H) above the floor and to a distance of at least 250 mm (G) outside the width of the product, on the right-hand side. It should be accessible with the product installed.

6 FLUSH MOUNTING INSTALLATION (NOT RECOMMENDED)

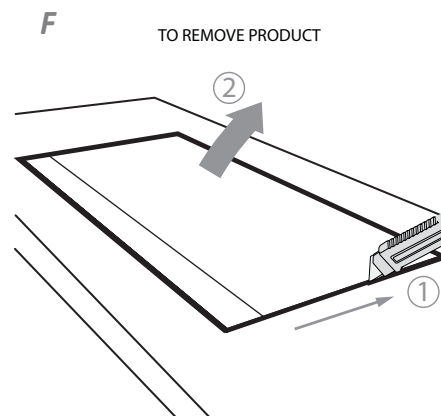
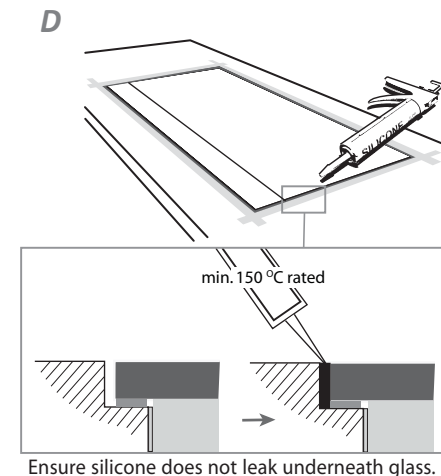
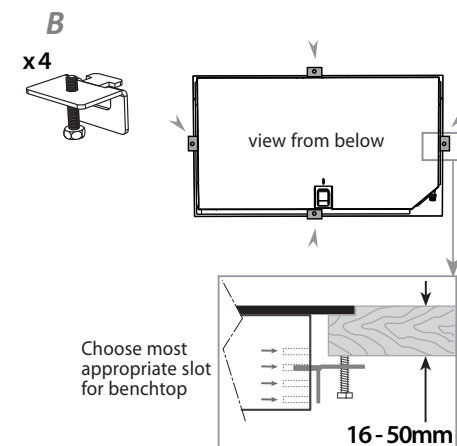
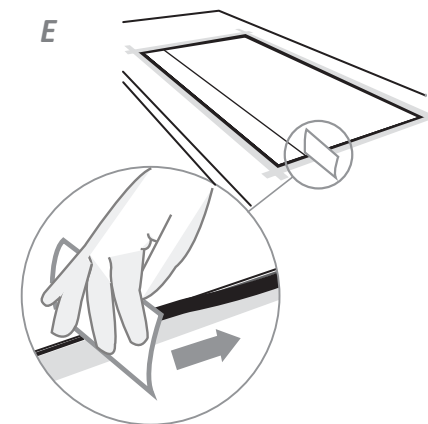
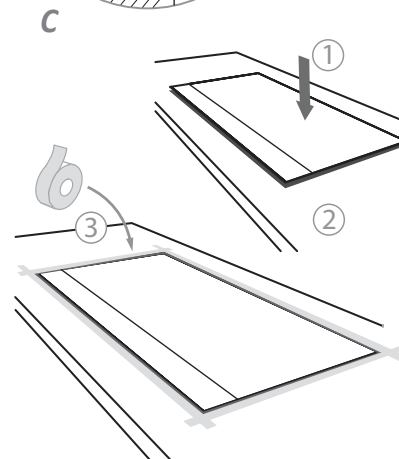
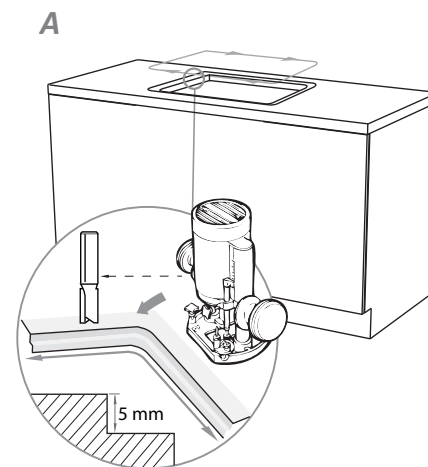
⚠ WARNING!

We do not recommend flush mounting and sealing as servicing requires the cooktop to be removed from the benchtop. The owner carries all risk for flush mounting the cooktop. The owner must ensure the cooktop has been cut out from the benchtop before servicing can be carried out. Fisher & Paykel will not be liable for any costs associated with removing or replacing a flush-mounted and/or sealed-in product, nor for repairing any damage that may be incurred by doing this.

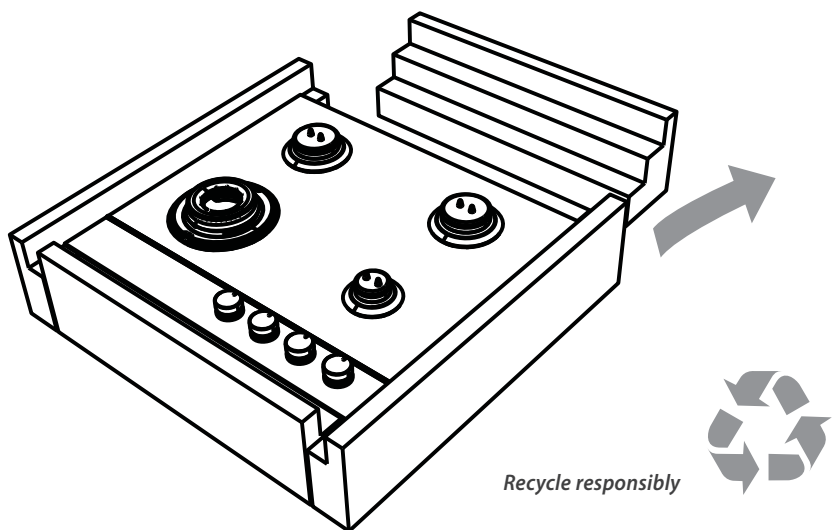


Product and cabinetry dimensions (mm)

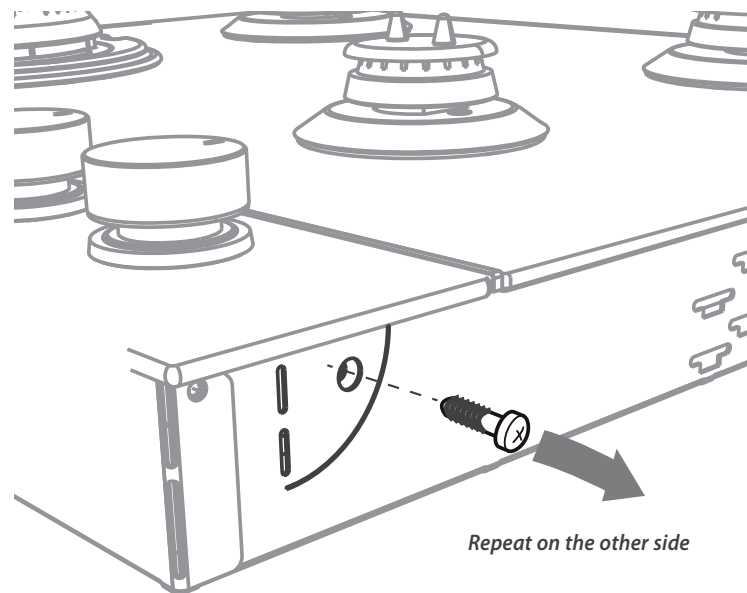
Product and cabinetry dimensions (mm)		CG603D	CG604D	CG905D
A	overall height of product (excluding burners, dials and pan supports)	64	64	64
B	overall width of product	600	600	900
C	overall depth of product	530	530	530
D	height of chassis (below top of bench)	64	64	64
E	width of chassis	555	555	856
F	depth of chassis	486	486	486
G	overall width of routed recess	605	605	905
G ^I	width of cutout	560	560	865
H	overall depth of routed recess	535	535	535
H ^I	depth of cutout	490	490	490
I	corner radius of cutout	max. 10	max. 10	max. 10
J	distance from top of bench to centre of gas inlet on product	37	37	37
K	distance from edge of chassis to gas inlet on product	21	21	21
L	corner radius of routed recess	max. 2	max. 2	max. 2
M	height of routed recess	5	5	5
N	minimum clearance below top of benchtop to:			
	combustible surface	75	75	75
	Fisher & Paykel oven or nearest non-combustible surface	70	70	70



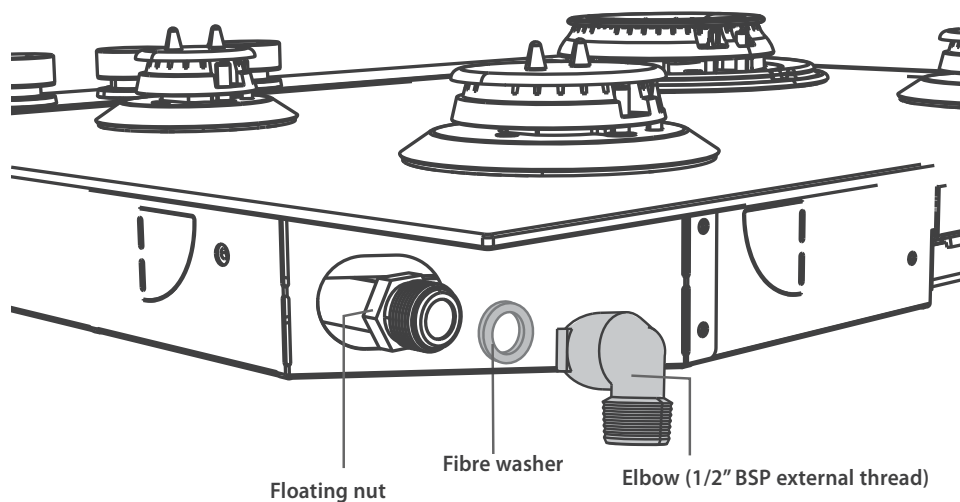
⑦ DISCARD PACKAGING



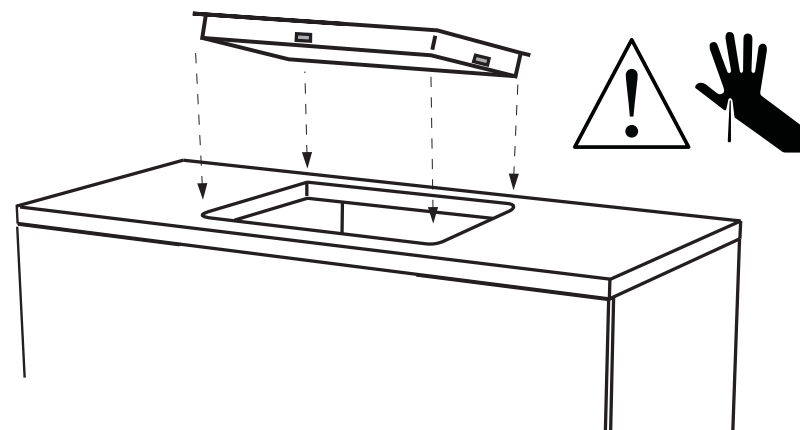
⑧ REMOVE THE TWO TRANSIT SCREWS



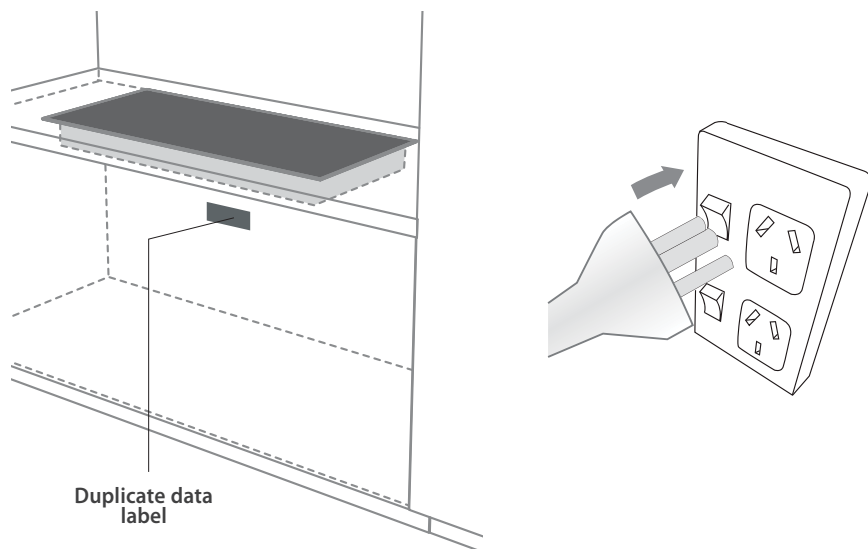
⑨ FIT THE ELBOW AND WASHER



⑩ LOWER GENTLY INTO THE CUTOUT

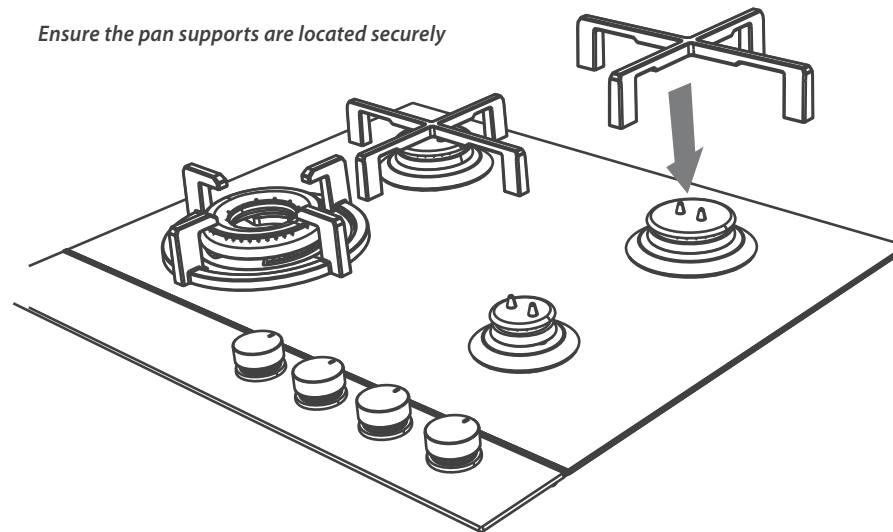


15 AFFIX DUPLICATE DATA LABEL SOMEWHERE ACCESSIBLE & PLUG COOKTOP IN



16 FIT PAN SUPPORTS

Ensure the pan supports are located securely

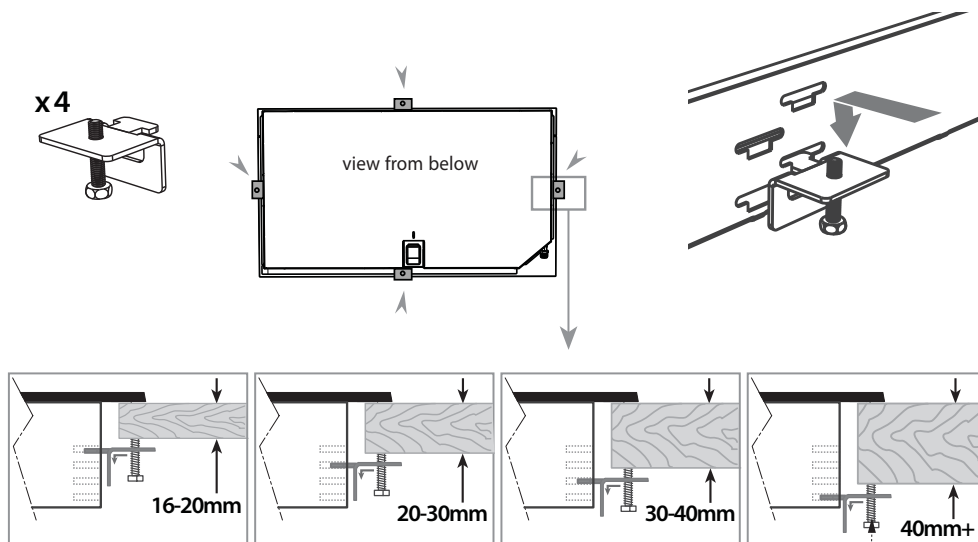


17 TEST OPERATION

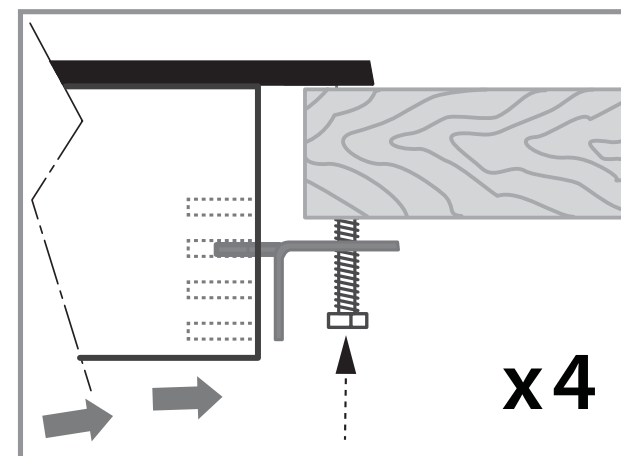
- To check that the ignition system operates correctly, light each burner by itself, then all burners in combination.
 - Check for a well-defined blue flame without any yellow tipping.
 - If any abnormality is evident, check that the components of the burner assembly are located properly
 - If proper operation cannot be obtained, contact Customer Care or your nearest F&P Authorised Service Centre.
- The cooktop must not be used by the customer until proper operation has been achieved.



⑪ FIT CLAMPING BRACKETS BASED ON THE BENCHTOP THICKNESS



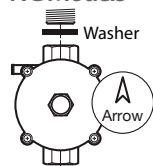
⑫ SECURE TO BENCHTOP



Repeat on all the other sides

⑬ CONNECT TO GAS SUPPLY

NG Models



- Make sure to fit the supplied washer and regulator.
- Adjust to obtain a **test point pressure of 1 kPa** with the two semi-rapid burners operating at highest setting.

LPG Models



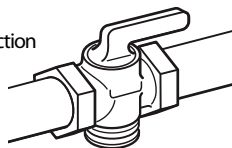
- Make sure to fit the supplied washer and test point adaptor.
- Make sure the **supply pressure is regulated to 2.75 kPa**, with the two semi-rapid burners operating at highest setting.

ALL Models

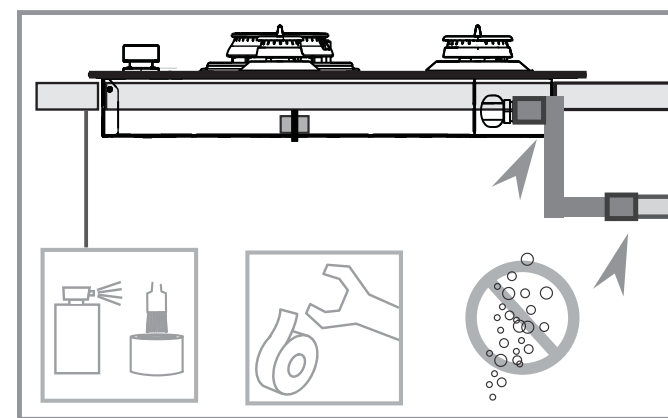
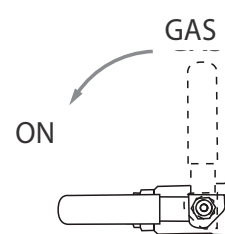
- Make sure the connection point will be accessible with the cooktop installed.
- To enable the gas supply to be readily shut off by the customer, make sure the connection is fitted with an isolating valve close to the cooktop.

If connecting the gas with a flexible hose:

- Ensure the hose is long enough to allow for removal of cooktop for servicing.
- Make sure the connector is located as shown in step 3 CLEARANCE DIMENSIONS.
- The hose assembly must be AS/NZS 1869 Class B or D certified, with an Rp 1/2" (ISO 7-1) female thread connection.
- The hose assembly must be as short as practicable and comply with relevant AS 5601/NZS 5261 requirements.
- The hose must not be kinked, subjected to abrasion or permanently deformed.
- The hose must not be near or in contact with any hot surfaces (e.g. base of metal hotplate, flue, or chassis of underbench oven etc.)



⑭ CHECK ALL CONNECTIONS FOR GAS LEAKS



18 FINAL CHECKLIST

✓ TO BE COMPLETED BY THE INSTALLER

- ☐ Have you installed the clamping brackets?
- ☐ Have you verified that the type of model (factory-set for NG or LPG) matches the type of gas at the site of installation?
- ☐ Have you used both fibre washers supplied?
- ☐ Have you leak-tested all connections?
- ☐ Is the regulator or test point adaptor set to the correct working pressure?
- ☐ Have you affixed the supplied duplicate data plate label on an adjacent surface accessible to the customer?
- ☐ Is the cooktop earthed?
- ☐ Check that the power supply cable is NOT touching the cooktop.

OPERATION:

- ☐ Do all burners ignite both individually and in combination?
- ☐ Are the flames consistent and appropriately sized?
- ☐ Have you demonstrated the basic operation to the customer?

Installer's name:

Installer's signature:

Installation company:

Date of installation:

LEAVE THESE INSTRUCTIONS WITH THE CUSTOMER