

LIQUIFI

THE ORIGINAL WATERPROOF TV



Lifestyle Series

LWB-47MBE INSTALLATION GUIDE



1300 699 788
info@liquifi.com.au

THANK YOU

Thank you for selecting a Liquifi Mirror Frame TV.

ABOUT THIS GUIDE

This guide will assist in the installation and use of the Liquifi Lifestyle Series of Mirror Frame Full HD LED televisions.

For further assistance please go to www.liquifi.com.au or call 1300 699 788.

APPLICABLE MODELS

This guide is applicable to the LWB-47MBE, 47inch Mirror Frame TV.

PACKAGE CONTENTS

Your television package should consist of the following:

1. Television Unit
2. AC Power cord
3. Remote control
4. Bracket for surface mount or concealed, recessed installation
5. Mounting hardware
6. Frame
7. Frame Fixing hardware

If any items are missing, please contact your dealer.



RECOMMENDED INSTALLATION LOCATION

The environment in which the television mirror product is installed will affect the product's performance. The key factor to consider for proper installation is surrounding and ambient light. Use the following guidelines to maximize the performance of the Liquifi product:

TYPE OF LIGHTING

Avoid direct natural sunlight and excessive fluorescent lighting on the television display. These conditions will diminish the television brightness, and hinder its performance.

LIGHT DIRECTION

Avoid directing lights toward the mirror. Position lights such that they provide light on the person or object to be reflected, not the mirror itself. For example, lights on the wall next to the mirror are preferred over lights located on the ceiling in the center of the room.

BACKGROUND COLORS

Sidewalls and furnishings that are dark, uniform, and non-reflective will provide for better performance of the television quality. Bright colors, patterns, and contrasting colors will minimize the quality of the display.



MIRROR RECOMMENDED CARE

Our patented mirror technology has been developed to completely protect the mirror surface and allow ease of maintenance for the consumer. Please follow the guidelines listed for proper mirror care and cleaning:

- The glass surface can be cleaned with any conventional non-ammoniated glass cleaner. Care should be taken to use only a soft lint-free cloth. Apply all cleaners directly to the cloth and not the mirror surface.
- Never saturate the mirror surface as residual cleaner may seep behind the mirror.
- Stubborn spots can be removed with solvents such as mineral spirits, de-natured alcohol, and acetone, Immediately remove solvent and dirt residues per the prescribed methods above with a compatible glass cleaner or water.



IMPORTANT SAFETY INFORMATION

WARNING: READ ALL INSTRUCTIONS AND REVIEW ALL DRAWINGS BEFORE ATTEMPTING TO INSTALL, AND OR SERVICE, THIS PRODUCT.

When installing and during use of this product, basic safety precautions should always be followed to reduce the risk of fire, electric shock and/or injury to persons including the following:

- Inspect the desired location for installation and be aware of all electrical wiring pathways, water pipes, gas lines, or other potentially hazardous conditions that may exist to protect from accidental damage during creation of on-site conditions.
- All required electrical specifications are adhered to and have been installed by the appropriate individuals and are code approved.
- All framing requirements, if needed have been completed to building code and pose no structural issues.
- It is REQUIRED that this product is plugged into an electrical outlet protected by a Ground Fault Circuit Interrupter (GFCI) to protect against electric shock, fire, and/or injury. Failure to do so will void any warranty for this product.
- Only qualified individuals should attempt to service the product. Removing covers can expose you to high voltage and other dangerous conditions.
- To protect against electric shock, do not immerse the power cord, power plug, or product in water or other liquid.
- Do not overload AC outlets or extension cords. Overloading can cause fire or electric shock.
- Close adult supervision is necessary when any product is used by or near children.
- Do not operate any product with a damaged cord or plug or operate it after the appliance malfunctions or has been damaged in any manner.
- Do not let the power cord come in contact with hot surfaces.
- To electrically disconnect the product, turn OFF the product, then remove the electrical power plug from the outlet.
- Do not use this product for other than intended use.
- This product is only intended for use indoors.
- This product is not waterproof. Do not immerse this product in water and/or expose to dripping or splashing water as this could cause an electrical hazard.



INSTALLATION INSTRUCTIONS

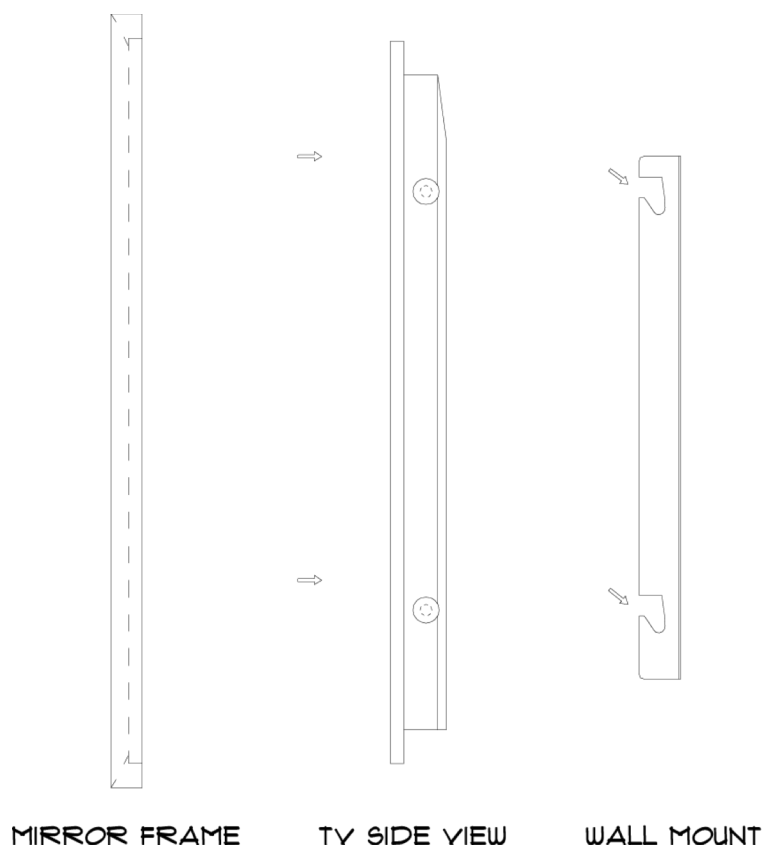


WARNING

- Do not handle or remove your television mirror from the packaging until it is ready to be installed.
- To avoid damage to the television mirror, only transport it in a vertical position.
- It is highly recommended that at least three (3) persons assist in the installation of the television mirror.
- Mirror suction cups are not recommended for use in the installation of your

INSTALLATION OVERVIEW

The mount solution is provided in two pieces. A left and right mount. Each mount is fixed to the wall, at a specific width apart. The TV then hangs on these mounts. The frame is secured to the TV via M3 screws.



MIRROR FRAME

TV SIDE VIEW

WALL MOUNT



ORDER OF INSTALL

1. Secure mounts
2. Test Hang TV
3. Remove TV
4. Install Frame
5. Connect Inputs and Power
6. Hang TV

TELEVISION INSTALLATION TASKS

1. Determine desired installation location

Consider the information provided in the location recommendation.

2. Ensure power supply is within 1m of your desired installation location

If a power point is required to facilitate installation, please refer this work to a licensed electrician. For an install where no power or input cables are visible, a wall access point should be installed directly behind the input panel at the rear of the television.

3. Verify that the rough opening is to required dimensions for your television (Not applicable for surface mounting)

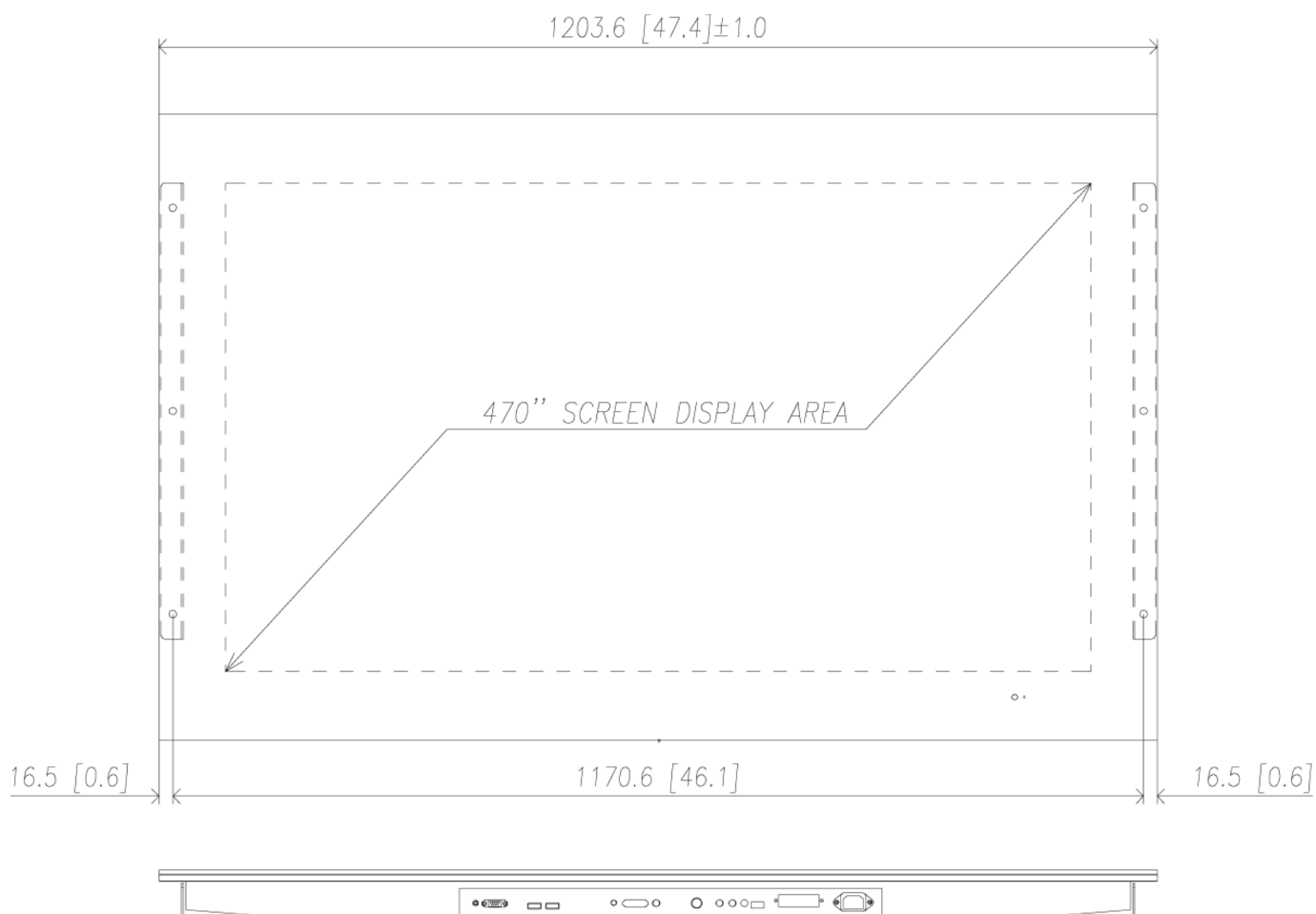
The size of the recess is dependent on the model and size of the television you have purchased. Dimensional information is available at www.liquifi.cm.au

4. Install mounting brackets

Mount the brackets to a secure reinforced wall section, such as frame studs in a brick veneer home. The mounts need to be a specific width apart to allow the TV to hang between the left and right mount.

The distance between the centre bolt hole of the left bracket, to the centre bolt hole of the right bracket is **1170.6mm**. See Diagram overleaf.





MOUNTING DIMENSIONS

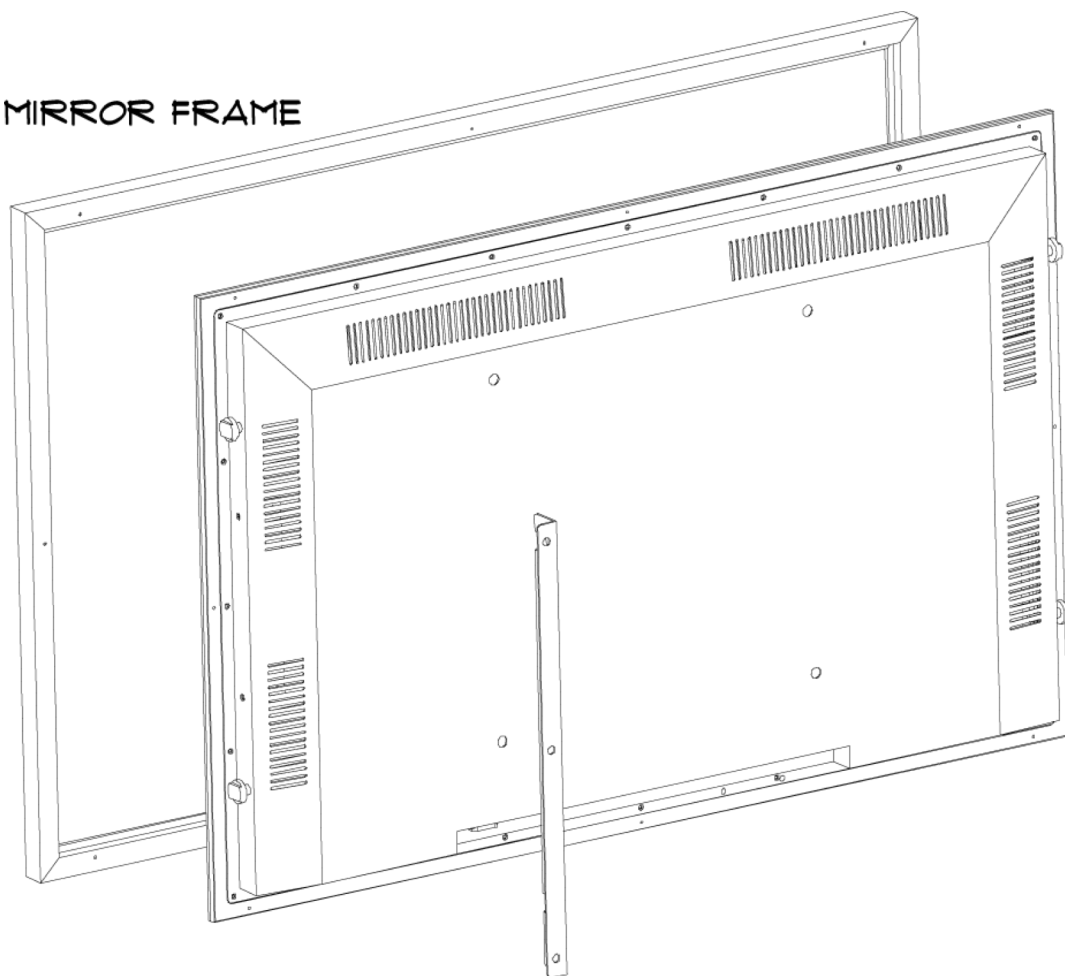
NOTE:

1. Required width between the two mounts is 1170.6mm
2. The direction of mount placement is such that the section that secures to the wall mounts outwards from the TV (see rear elevation image above, for clarity).



MIRROR FRAME

TV REAR VIEW



WALL MOUNT



WALL MOUNT

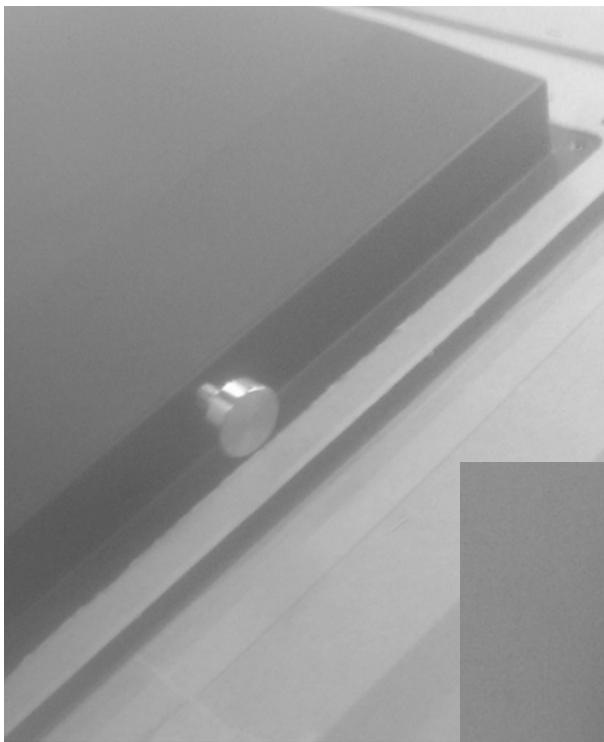


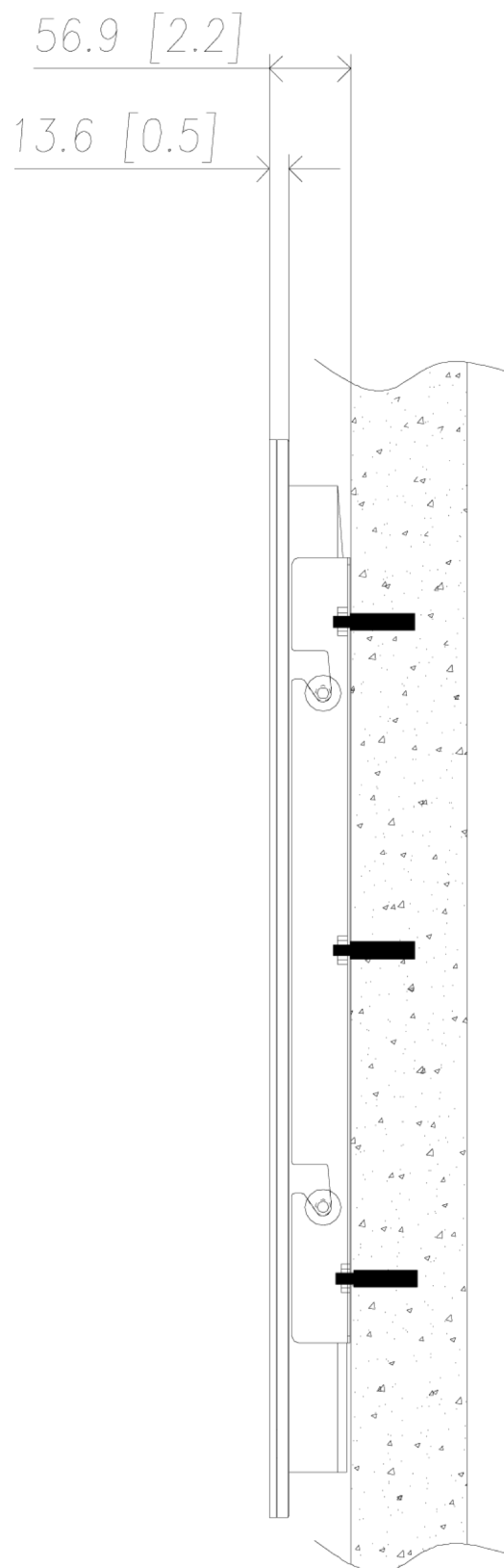
5. Trial Hang the TV

Once the mounts are secure, trial hang the TV to ensure that the mounts have been spaced the appropriate width apart. Mounting points on the TV should align directly onto the mounting points of the left and right mount. The mount points are designed with a wide opening to allow ease of hanging.

Position television mirror close to wall surface and securely engage mounting brackets.

Allow for a 1/4" ventilation gap for proper air flow and heat transfer.





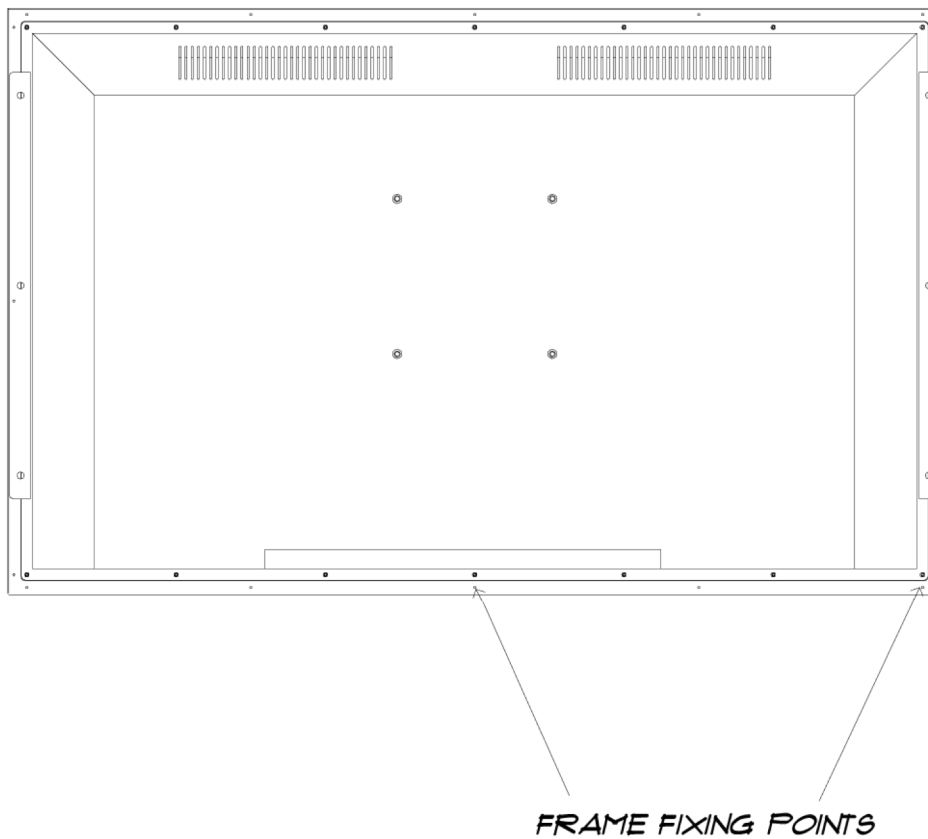
MOUNTED TO WALL



6. Fix Frame to Television

Using the M3 screws and brackets provided fix the frame to the TV. The Frame has 5 fixing points across the top, 5 across the bottom and 3 on each side, for a total of 16 fixing screw points. Some frames will be supplied pre-drilled. Others will require you to drill on site, aligning the screw holes on the frame, with those already predrilled on the TV.

REAR VIEW MIRROR FRAME TV



7. Run input cables to the installation location

You may choose to run a standard antenna cable (for Free to Air television), HDMI (for Foxtel, and other video feeds) or other inputs.

8. Connect the TV

Connect the television to the power and input cables.

9. Turn the TV on, test for vision and sound

Test that the television, turns on, can read the connected inputs, and that the sound works properly.

10. Troubleshoot if issues are encountered

If you have encountered issues during testing of the television, please refer to section 2 for troubleshooting tips.

11. Finalise installation and Re-mount television

Re-mount the television as per step 5. Check to ensure the television mirror is fully engaged and secure to the mounting brackets.



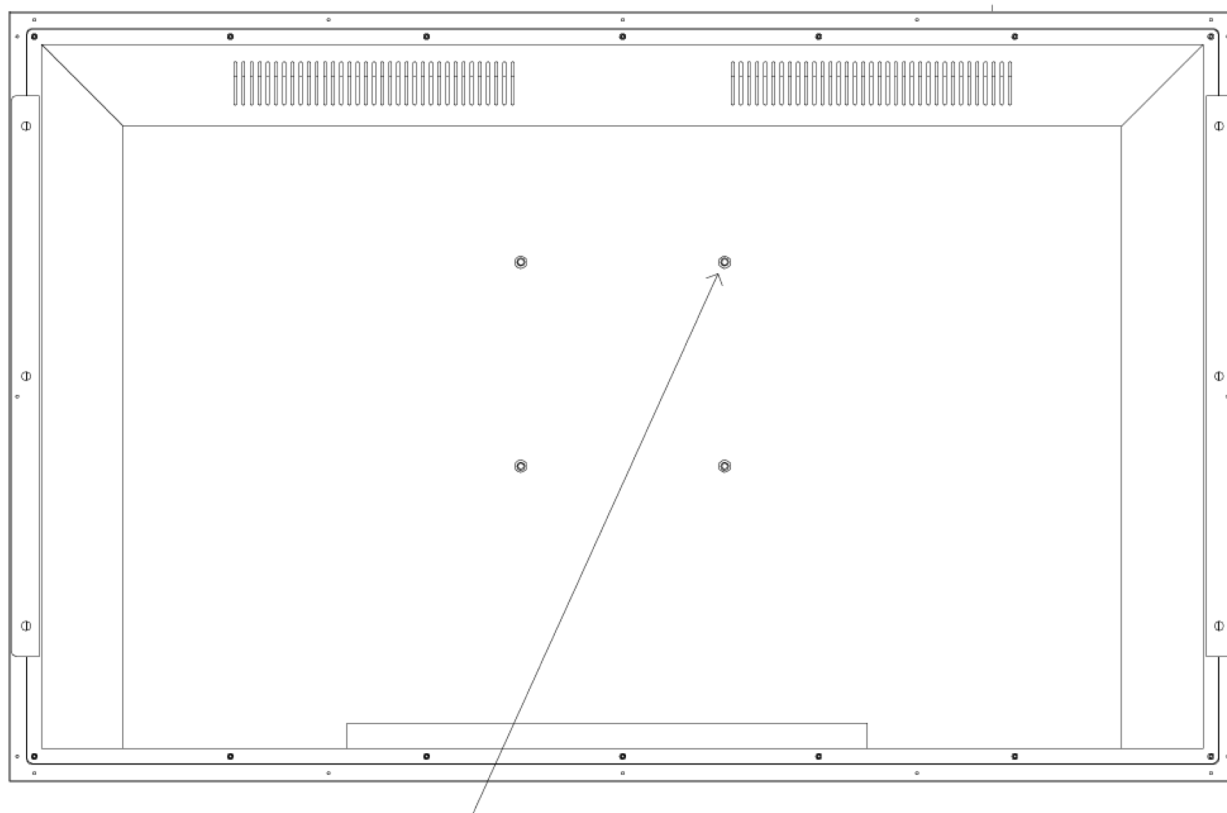
USE OF VESA MOUNTS STRICTLY PROHIBITED



WARNING

- This product is not designed for use with VESA compliant wall mounts.
- The screws at the rear of the TV may appear to be VESA compliant mounts but are not.
- These screws are not to be removed under any circumstances
- Removal of these screws can be detected, and will void the warranty

REAR VIEW MIRROR FRAME TV



*NOT TO BE USED FOR MOUNTING UNDER ANY
CIRCUMSTANCES*



TROUBLESHOOTING

ISSUE	RESOLUTION
No display	<p>Check the power supply of TV, such as AC/DC adapter, AC power outlet and DC power connection.</p> <p>Check input signal sources and its cables, or if the TV is set to standby status.</p>
On screen prompt: "No input" or "Input Not Supported" or "Out of Range"	<p>Check inputs are connected at the TV and at the source.</p> <p>Check the resolution of the PC VGA output. We recommend the resolution is not higher than XGA 75Hz (for 15"TV), and no higher than SXGA 75Hz (for 17" and 19" TV). The optimum vertical refresh frequency of the LCD is 60Hz.</p>
Image position is not right	<p>Select the "Auto Config" or manually adjust the image.</p>
There are "water waves", "twinkling points", or incorrect colour on the screen	<p>Check the cable of input signal source and the quality of those signals.</p>
The volume of speaker is too low or distorted	<p>Ensure that the speaker cables have not been crossed during install (i.e. positive to negative terminal connections).</p> <p>Check the volume value, increase the volume via adjusting the OSD menu and check the sound source quality.</p>
No sound	<p>Confirm the sound control is not set to mute.</p> <p>Confirm the TV program or input signal is supposed to have sound (It may be silent).</p>



	<p>Static or white noise screens are silent in digital transmissions.</p> <p>Confirm speaker switch at bottom of TV is switched to “internal speakers” (when no external speakers are connected)</p> <p>For External Speaker connections:</p> <p>Confirm speaker cable connections.</p> <p>Check speaker wires for damage.</p>
<p>There are striped bands, or many twinkling points on the screen; and the colour is dark</p>	<p>Check whether the TV is disturbed by other strong electrical sources nearby. Some older appliances, or ones that do not conform to current regulations, may emit electrical interference (EMS).</p> <p>Check if a local transmitter is causing the interference.</p> <p>Check if the power cable or AC adaptor is too close to the antenna cable.</p>
<p>The TV image is not clear</p>	<p>Check the RF antenna quality, the RF signal intensity and antenna connection to the TV.</p> <p>Try the manual TV search function. Generally, the image quality of cable TV tends to be better than an outdoor antenna.</p>



NOTES



WARRANTY

LIQUIFI WARRANTS THAT THE PRODUCT SHALL BE FREE FROM MATERIAL DEFECTS AND DEFECTS IN WORKMANSHIP FOR A PERIOD OF ONE (1) YEAR FROM THE DATE OF PURCHASER'S RECEIPT OF THE PRODUCTS.

SUCH WARRANTIES DO NOT EXTEND TO COMPONENTS OF THE PRODUCTS THAT ARE FURNISHED TO LIQUIFI, BUT NOT MANUFACTURED BY LIQUIFI, IF THE MANUFACTURER OF SUCH COMPONENTS EXTENDS A WARRANTY TO LIQUIFI IN WHICH EVENT, LIQUIFI SHALL EXTEND THAT WARRANTY TO PURCHASER, BUT ONLY TO THE EXTENT THAT THE WARRANTY IS EXTENDED BY THE MANUFACTURER OF THE COMPONENT TO LIQUIFI.

NOTICE OF ANY WARRANTY CLAIM MUST BE RECEIVED BY LIQUIFI, IN WRITING, PRIOR TO THE EXPIRATION OF THE WARRANTY PERIOD. LIQUIFI'S WARRANTY IS LIMITED SOLELY TO THE ABOVE AND APPLIES ONLY FOR THE PERIOD SET FORTH. LIQUIFI WILL NOT BE LIABLE FOR ANY LOSS, DAMAGE, DIRECT, INCIDENTAL OR CONSEQUENTIAL DAMAGES OF ANY KIND, WHETHER BASED UPON WARRANTY, CONTRACT, NEGLIGENCE, OR STRICT LIABILITY, OR ARISING IN CONNECTION WITH THE SALE OR USE OF THE PRODUCTS.

IN ALL EVENTS, LIQUIFI'S MAXIMUM LIABILITY TO PURCHASER RELATED TO ANY WARRANTY CLAIM OR DEFECT WITH RESPECT TO THE PRODUCTS SHALL NOT EXCEED THE CONTRACT PRICE FOR THE SPECIFIC PRODUCTS CLAIMED TO BE DEFECTIVE OR UNSUITABLE, OR ALLEGED TO HAVE BEEN THE CAUSE OF ANY DAMAGE TO PURCHASER OR ANY THIRD PARTY. THE FOREGOING IS IN LIEU OF ALL OTHER WARRANTIES, ORAL, EXPRESSED OR IMPLIED, INCLUDING, BUT NOT LIMITED TO, ANY IMPLIED WARRANTIES. OF FITNESS FOR A PARTICULAR PURPOSE.

THE PROVISIONS OF THIS SECTION SHALL BE APPLICABLE TO BOTH IMPLIED WARRANTIES (IF ANY) AND EXPRESSED WARRANTIES.

THIS WARRANTY MAY BE EXTENDED TO THREE (3) YEARS WITH THE ADDITIONAL PURCHASE OF A THREE (3) YEAR WARRANTY.

