

K296 Rangehood

ID 030804

Twin Motor, Freestanding Air Extractor



60cm White Code 2290
60cm Stainless Steel Code 2291
90cm White Code 2292
90cm Stainless Steel Code 2293

- SIZES 60cm and 90cm
- COLOURS Enamelled White or Stainless Steel
- INSTALLATION Built into cupboard line or freemount onto wall
- MOTORS Two single shaded pole motors with 1.2 impellers
- SPEEDS Three: low, medium, high; via pushbuttons
- ILLUMINATION 2 x 40 watt SES tubular globes with separate push button
- CAPACITY 480 cubic metre an hour nett
585 cubic metre an hour gross
- FILTER Aluminium mesh (removable)
- AIR EXTRACTION Ducted or recirculated
- OPTION Activated charcoal filter

SOFTLINE STYLING

The rounded protrudence of the catchment area and the low angled rake of the carcass compliments the modern kitchen design.

APPLICATION

Easy

installation into cupboard line, independent of cabinetry overhead if rear ducted or recirculated to kitchen via vent in front of 300mm deep cupboard. Also can be mounted on bare wall with L brackets. Template and installation instructions are provided.

PERFORMANCE

The twin

motors and impellers deliver highly efficient air extraction of up to 585 cubic metres an hour. Suited for the more vigorous styles of cooking such as stir-frying and griddle cooking. The large flat catchment area and fixed glass visor further enhance vapour entrapment and extraction.

OPERATION

Clear

and logical front panel-mounted controls away from heat and vapour zone.

MAINTENANCE

Easy lift-out filter carriage and lift-out and washable (dishwasher safe) grease filter mat. Clean lines for wipe-over maintenance..

QUIETNESS

44-59dBA. The motor/impeller encasements and flues are smooth walled to minimise air drag and hence noise, with welded metal joins for no vibration.

SAFETY

Thermal overload protectors on motors, fire retardant hardened metal and mesh, VO self-extinguishing plastic for motor housings and flues.

DUCTING

Ideally the

extracted air is ducted direct to atmosphere via either the rear exit or the top centre rear exit. A sealing cap is provided for the unused exit. This direct ducting ensures the maximum removal of the grease/oil/particle laden vapour and heat resulting in a cleaner, more comfortable cooking environment. A collar (spigot) is provided for the exit to fit 125mm round ducting, whether it be galvanised sheet piping, high temperature PVC or flexible.

RECIRCULATING

When the cooking vapours cannot be ducted (a room above the kitchen and/or the rangehood is mounted on an internal wall) a simple redirection of the air via two adjustment nuts sends the filtered air back to the kitchen. More frequent inspection and cleaning of the mesh filter is recommended.

CHARCOAL FILTER

A purchasable accessory and easily fitted for the effective removal of cooking odours in the recirculating mode.

WARRANTY

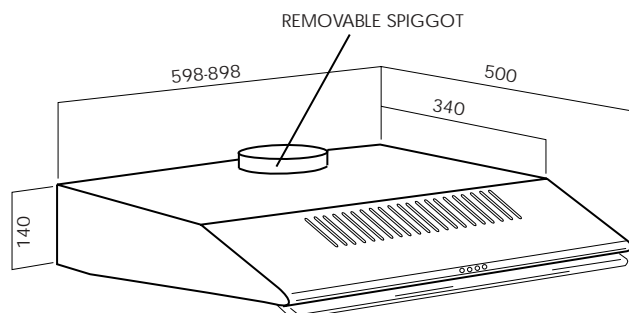
2 years on parts and labour.

omega

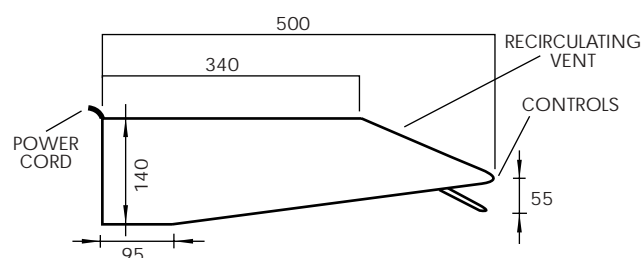
K296 Rangehood

Twin Motor, Freestanding Air Extractor

White 60cm	Code 2001
White 90cm	Code 2006
Stainless steel 60cm	Code 2013
Stainless steel 90cm	Code 2013

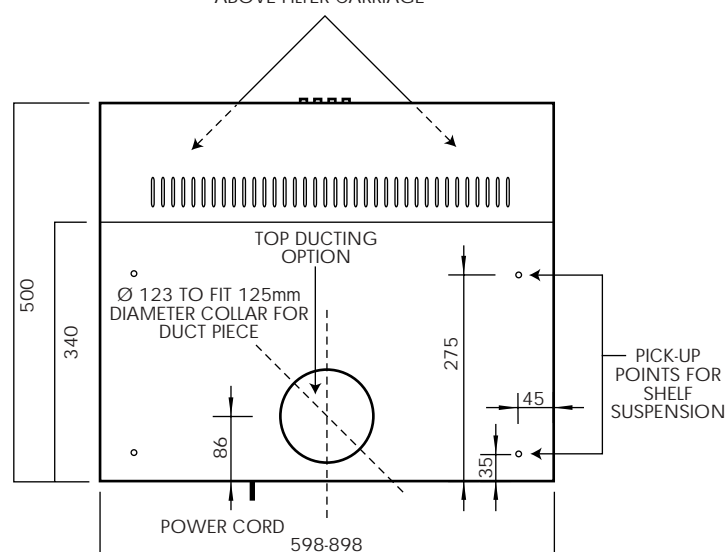


PLEASE NOTE – Minimum height
Above Electric Hob 600mm
Above Gas Multifuel Hob 650mm



SIDE ELEVATION

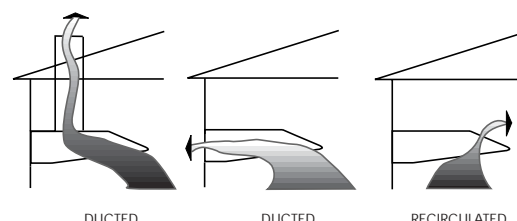
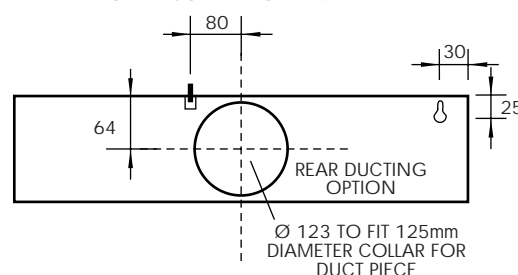
DUCTING OR RECIRCULATING INTERNAL FLUE.
DIRECTION CONTROLS ARE RECESSED
ABOVE FILTER CARRIAGE



PLAN

Height	140mm
Width	598mm or 898mm
Depth	500mm
Packaged Dimensions	600mm - 640 x 175 x 540mm = 0.06m ³ 900mm - 940 x 175 x 540mm = 0.09m ³
Nett Weight	600mm - 7.5kg 900mm - 9.0kg
Gross Weight	600mm - 8.5kg 900mm - 16.2kg
Air Extraction	480 cubic metres/hour nett 585 cubic metres/hour nett
Air Movement Speeds	Four: off, low, medium, high, via four push-buttons
Noise Rating	39-62dBa
Electricity Supply	240 volt 50Hz
Electrical Connection	Connect power cord with 3-pin plug
Power Cord Length	1.4 metres
Motors	2 x single shaded pole, opposite turning
Wattage	Motor 2 x 120 watt Lights 2 x 40 watt SES tubular Total 320 watt
Total Current	1.4 amp
Air Exit Aperture	123mm diameter for 125mm diameter ducting collar (spiggot)
Supplied	Template for wall and suspension mounting, spiggot for round ducting, screws, one-way butterfly valve for ducting collar

POWER CORD LENGTH 1.4m



AIR FILTERING OPTIONS

Warning: Technical specifications and product sizes can be varied by the manufacturer - without notice.
Cut outs for appliances should only be by physical product measurements. The above information is indicative only.