

# COOKER HOOD

---

## INSTRUCTION MANUAL AND INSTALLATION GUIDE

Please read this guide before installing and using the hood

MODEL	DESCRIPTION
CK60FXF	FIXED RANGEHOOD



PO BOX 63 Blaxcell PO South Granville NSW 2142

Tel 02 9721 2755 Fax 02 9721 2766 [www.glemgas.com.au](http://www.glemgas.com.au)

---

Dear Customer,

If you follow the recommendations contained in this Instruction Manual, our appliance will give you constant high performance and will remain efficient for many years to come.

## Product Specification & Technical Parameters

Model	CK60FXF
Rated Voltage	230V
Rated Power Frequency	50Hz
Light Power	1x25W
Motor Power	120W
Total Power	145W
Diameter of Outlet Adapter	120mm

## RECOMMENDATIONS AND SUGGESTIONS

### INSTALLATION

\* The manufacturer will not be held liable for any damages resulting from incorrect or improper installation.

\* Please read this instruction manual before installing and using this range hood. Please keep this instruction manual in a safe place for future reference.

\* This range hood can be used either in the Ducted Mode (ducting fumes to the outside) or in the Recirculation Mode (internal recycling). The choice of modes can be left to the customers.

\* Only a qualified and trained service technician can undertake the work of installation and servicing.

\* Check that the main voltage corresponds to the one indicated on the rating plate fixed inside the hood.

\* Do not connect the hood to exhaust ducts carrying combustion fumes (boilers, fireplaces, etc.).

\* If the hood is used in conjunction with non-electrical appliances (e. g. gas burning appliances), a sufficient degree of ventilation must be guaranteed in the room in order to prevent the backflow of exhaust gas. The kitchen must

have an opening directly with the open air in order to guarantee the entry of clean air.

\* The minimum distance is 750mm from the range hood to a gas hob, and is 650mm to an electric hob. If the installation instructions for gas hobs specify a greater distance, this must be taken into account.

**NOTICE:** Two or more people are required to install or move this appliance. Failure to do so can cause physical injuries.

## **USE**

\* The range hood has been designed only for domestic use to eliminate kitchen fumes.

\* Never use the hood for purposes other than what it has been designed for.

\* Never leave high naked flames under the hood when it is in operation.

\* Adjust the flame intensity to direct it onto the bottom of the pan only; making sure that it does not engulf the pan sides.

\* Deep fryer fat must be continuously monitored during use: overheated oil can burst into flame.

\* The hood should not be used by children or persons not instructed in its correct use.

## **MAINTENANCE**

\* Proper maintenance of the range hood will assure proper performance of the unit.

\* Disconnect the hood from the main supply before carrying out any maintenance work.

\* Clean and/or replace aluminum grease filters and activated charcoal filters after specified period of time.

\* Clean the hood using a damp cloth and a neutral liquid detergent.

\* **DISPOSAL:** Do not dispose this product as unsorted municipal waste. Collection of such waste separately for special treatment is necessary.

## **WARNING!!**

In certain circumstances electrical appliances may be a danger hazard.

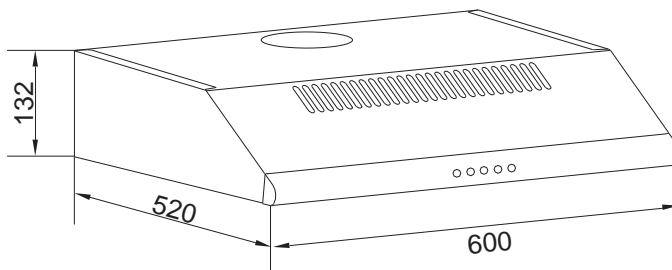
\* Do not check the status of the filters while the range hood is operating.

- \* Do not touch the light bulbs after appliance use.
- \* Do not disconnect the appliance with wet hands.
- \* Avoid free flame, as it is damaging for the filters and a fire hazard.
- \* Constantly check food frying. Overheated oil may become a fire hazard.
- \* Disconnect the electrical plug prior to any maintenance.
- \* Children don't recognize the risks of electrical appliances. Therefore use or keep the appliance only under supervision of adults and out of the reach from children.
- \* Don't use this product outdoors.
- \* This appliance is not intended for use by persons (including children) with reduced physical, sensory or mental capabilities, or lack of experience and knowledge, unless they have been given supervision or instruction, concerning use of the appliance by a person responsible for their safety. Children should be supervised to ensure that they do not play with the appliance.
- \* There shall be adequate ventilation of the room when the range hood is used at the same time as appliances burning gas or other fuels.
- \* There is a fire risk if cleaning is not carried out in accordance with instructions.
- \* Do not flambé under the range hood.
- \* The exhaust air must not be discharged into a flue which is used for exhausting fumes from appliances burning gas or other fuels.

## CHARACTERISTICS

---

### DIMENSIONS



# INSTALLATION & USE

## DESCRIPTION / CONNECTIONS

The hood may be installed in the Ducting or the Recirculating version.

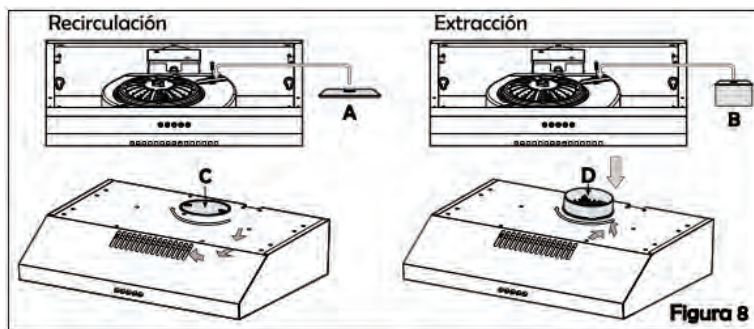
It depends on the which wind part is installed on the range hood.

There are two wind pads for each range hoods, A and B.

With wind part A installed, the range hood is in recirculation mode.

With wind part B installed, the range hood is in ducting mode.

The other one will be packed in the parts bag as spare parts



We recommend you: **CHECK THAT THE WIND PAD IS CORRECT.** The wind pad is found on the motor unit and must be installed with wind pad A in the case of RECIRCULATING mode.

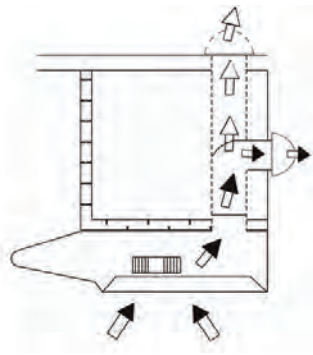
The default mode of this hood is recirculating.

If change to exhaust way, disassemble the metal lamp board first, then change the part A to part B, which is as spare in the manual bag. Take away the air outlet cover and install the air outlet adapter with no-return valve.

### Ducting version

The hood draws the cooking fumes saturated with fumes and odor, through the grease filters and expels it to the outside through an outlet pipe. With this version the charcoal filters are not required.

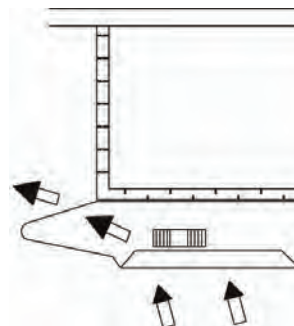
**Caution:** To reduce the risk of fire, the use of metal ductwork is preferred. Do not use flammable material to convey exhaust air.



1. Decide where the ductwork will run between the hood and the outside.
2. A straight, short duct run will allow the hood to perform most efficiently.
3. Long duct runs, elbows, and transitions will reduce the performance of the hood. Use as few of them as possible. Larger ducting may be required for best performance with longer duct runs.
4. Attach an adequate length of  $\phi 125\text{mm}$  round duct to the air outlet adapter.
5. The air must not be discharged into a flue that is used for exhausting fumes from appliances burning gas or other fuels. Regulations concerning the discharge of air have to be followed. Check with the local authority and building codes for exhaust ducting requirements.
6. Install a roof/wall cap. Connect round metal ductwork to cap and work back towards hood location.

### **Recalculating version**

The hood draws cooking fumes saturated with fumes and odor through the grease filters and charcoal filters and returns clean air into the room. For constant efficiency, the charcoal filters must be replaced periodically.



**Caution:** No need for plastic or rigid metal ducting.

1. Install the charcoal filter.
2. Please note that the air is re-circulated into the room through the front vents.

**Decide from the outset on the type of installation (recirculation or ducting). For greater efficiency, we recommend you install the hood in the ducting version.**

### **Electrical Connection**

\* Electrical wiring must be done by a qualified person(s) in accordance with all applicable codes and standards. **Turn off electrical power at service**

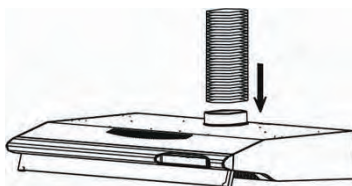
## entrance before wiring.

- \* If the supply cord is damaged, it must be replaced by the manufacturer, its service agent or similarly qualified persons in order to avoid a hazard.
- \* Do not use the plug and an extension cord other than the ones initially supplied with the hood.

## INSTALLATION

Before beginning installation, to better handle the hood, we advise removing the aluminum filter.

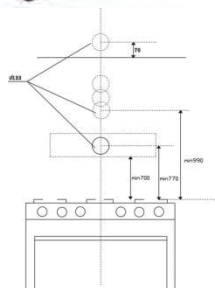
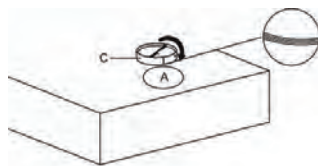
Before fixing, the outlet exhaust duct for air evacuation to the outside must be installed. Use an outlet exhaust duct with: - minimum indispensable length; -Minimum possible bends (maximum angle of bend: 90°); -certified material (according to local, building & fire regulations); and as smooth as possible inside. It is also advisable to avoid any drastic changes in duct cross-section (recommended diameter: 125mm).



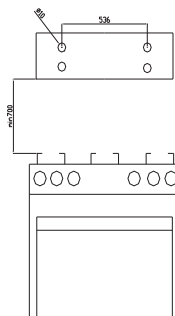
Decide on the position of the hole for the air outlet:

The hole may be in the wall or the ceiling, according to your requirements, but must be in vertical line with your hood. Select the type most suited to your needs and proceed by mounting the air outlet adapter(C)

Drill the hole in the wall for the air outlet (133 mm diameter) referring to drawings here on the right where the measurements for the various possibilities are indicated.

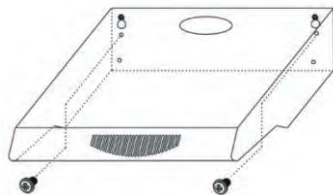
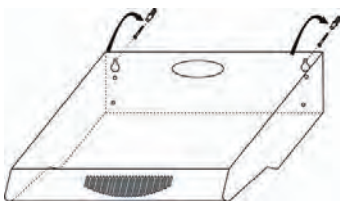


Proceed with fixing the hood: Based on your requirements, you can fit the hood on the wall or on a wall unit of your kitchen. IMPORTANT: Respect the distance between the hob and lower part of the hood which must be at least 650mm.



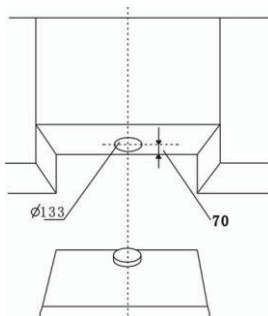
## **Fixing to the wall**

1. Draw a line on the wall in vertical line with your hob.  
Mark the 4 holes to be drilled in the wall, respecting the distances indicated; Make the 4 holes and fit the 4 screw anchors provided. Take 2 of the screws provided and insert them in the topmost screw anchors without, however, screwing them down completely. Hang the hood on the 2 screws; Working from inside the hood, tighten the 2 screws completely.
2. Now proceed with final fixing by fitting the other 2 screws. Connect a flexible exhaust duct to the hood flange, using a metal hose clamp. Tube and hose clamps are not provided.
3. Make the electrical connection.



## **Fitting under wall unit**

1. Drill 4 holes in the wall unit, respecting the distance indicated. Push the hood up against the wall unit and insert the 4 screws operating from inside the wall unit. Connect a flexible tube to the hood flange, using a metal hose clamp. Tube and hose clamps are not provided.
2. Make the electrical connection.



## **Notice:**

-Exhaust air must not be discharged into a flue which is used for exhausting fumes from appliance burning gas or other fuels.



-If the instructions for installation for the gas hob specify a greater distance than 650mm, this has to be taken into account.

-The regulations concerning the discharge of exhaust air have to be followed.

## **OPERATION**

### **OPERATION OF CONTROLS**

The hood is operated using the push button on the front panel.

The light switch turns the lamps on and off.

The blower switch turns the blower on to three speed settings:

0 - OFF

1 - LOW SPEED

2 - MEDIUM SPEED

3 - HIGH SPEED



## **MAINTENANCE**

### **GREASE FILTER**

The grease filters should be cleaned frequently (every two months of operation, or more frequently for heavy use). Use a warm detergent solution.

Grease filters are washable.

### **RECIRCULATION CHARCOAL FILTER (RECIRCULATING VERSION)**

The charcoal filter ( optional ) is not washable, cannot be regenerated, and should be replaced approximately every 3 months of operation, or more frequently in the case of heavy usage.

1. To install the charcoal filter by turning clockwise, lock it until the stop click is heard.
2. Install the metal grid and grease filter after charcoal filter is installed.
3. To remove the charcoal filters, remove the charcoal filter by turning anti-clockwise.

## **LAMPS**

This range hood requires one normal lamp (AC 230V, 25W Max)



## GLEM GAS AUSTRALASIA PTY. LTD. PRODUCT WARRANTY

Thank you for choosing an Emilia Glem Appliance, the purchase of this appliance is an important investment in your home and so to protect your investment we urge you to complete the registration card attached, please return it immediately.

IT IS A WARRANTY REQUIREMENT THAT PROOF OF PURCHASE BE PROVIDED PRIOR TO REQUESTING A SERVICE CALL. THIS WARRANTY SHALL NOT APPLY IF THE APPLIANCE WAS NOT INSTALLED BY A LICENSED TECHNICIAN AND PROOF IS NOT SUPPLIED.

The benefits conferred by this warranty are in addition to all other conditions and warranties in respect of this product which the consumer may have under the Trade Practices Act 1874 of the Commonwealth of Australia and/or similar State or Territory Laws.

Our goods come with guarantees that cannot be excluded under the Australian Consumer Law. You are entitled to a replacement or refund for a major failure and for compensation for any other reasonably foreseeable loss or damage. You are also entitled to have the goods repaired or replaced if the goods fail to be of acceptable quality and the failure does not amount to a major failure.

Glem Gas Australasia Pty Ltd warrants, this appliance to be free from defects in workmanship and materials for a period of:  
a) Where the appliance is intended to be used and is used for DOMESTIC USE – 24 MONTHS FROM DATE OF DELIVERY TO THE ORIGINAL PURCHASER.

b) Where the appliance is intended to be used and is used for COMMERCIAL USE – 90 DAYS FROM DATE OF DELIVERY TO THE ORIGINAL PURCHASER.

Glem Gas Australasia Pty Ltd, during the period of warranty, will at its option, and subject to the terms and conditions stated below, repair or replace free of charge this appliance or any component part, which upon examination by Glem Appliances P/L. is found to be defective.

### THIS WARRANTY SHALL NOT APPLY:

- a) If the rating plate has been removed or the serial number or other details on it have been removed or rendered illegible.
- b) If the appliance is connected to any voltage other than shown on rating plate.
- c) If the appliance has been subjected to misuse, abuse accident or want of care.
- d) If the appliance has been installed, operated or maintained contrary to the instructions supplied by Glem Gas Australasia P/L.
- e) If any defect or failure is due to connection to an inadequate or faulty power supply.
- f) If damage is caused by foreign objects in or on the appliance or by reason of its use for purposes other than that for which it was delivered.
- g) If a repair has been made or attempted by the purchaser.
- h) Where the appliance is installed outside an 80km radius from the GPO of any Australian Capital City to freight and travel costs beyond that radius.

This warranty does not cover any glass damage or replacement of light bulbs.

Parts covered under warranty that need replacing i.e.: seals, knobs or filters. These can be posted to customer to put on at their discretion.

This Warranty is given by Glem Gas Australasia Pty Ltd and no other person or organisation is authorised to vary its provisions and conditions.

### Complete this section and keep it for your own record.

Appliance type	<input type="text"/>	Model No.	<input type="text"/>	Serial no.	<input type="text"/>
Purchased from	<input type="text"/>	Date of purchase	<input type="text"/>		<input type="text"/>

### Please complete the section below and return to:

Glem Gas Australasia Pty. Ltd, PO Box 63 Blaxcell PO South Granville

## WARRANTY FORM

Appliance type	<input type="text"/>	Model No.	<input type="text"/>	Serial no.	<input type="text"/>
Purchased from	<input type="text"/>	Date of purchase	<input type="text"/>		

Customer Name	<input type="text"/>	Address	<input type="text"/>
---------------	----------------------	---------	----------------------

Installers Name	<input type="text"/>	Installers licence no.	<input type="text"/>
-----------------	----------------------	------------------------	----------------------

Installers Signature	<input type="text"/>
Installers Compliance Number	<input type="text"/>