

BUILT-IN CERAMIC HOB

INSTALLATION AND OPERATION MANUAL

CACC1

Please read the instruction manual carefully before operating your new hob.

Cod:

Dear Owner: Thank you for purchasing our cooktop which is designed to give you many years of cooking pleasure. Before using your new appliance please read the user's manual carefully and keep it in a safe place for future reference.

THIS APPLIANCE MUST BE INSTALLED ONLY BY A QUALIFIED PERSON FOLLOWING THE INSTRUCTIONS PROVIDED. THE MANUFACTURER WILL NOT TAKE RESPONSIBILITY FOR IMPROPER INSTALLATION WHICH MAY HARM PERSONS AND ANIMALS OR CAUSE DAMAGE TO PROPERTY. THE APPLIANCE MUST BE USED ONLY FOR THE PURPOSE FOR WHICH IT WAS EXPRESSLY DESIGNED. ANY OTHER USE (e.g. HEATING ROOMS) AND MANUFACTURER WILL NOT ACCEPT RESPONSIBILITY FOR DAMAGES RESULTING FROM IMPROPER AND IRRESPONSIBLE USE.

IMPORTANT NOTICE

Please register your warranty card. Return the enclosed certificate of guarantee, duly dated and signed. A duplicate data label and wiring diagram are contained in this booklet. Please attach these labels to an accessible and near by surface for easy reference. The Manufacturer shall not be held responsible for any inaccuracies in this handbook due to printing or transcription errors, also the designs in the figures are purely indicative. The Manufacturer also reserves the right to make any modifications to the products as may be considered necessary or useful also in the interests of the user, without jeopardizing the main functional and safety features of the products themselves.

Warning

1. Please check the built-in ceramic hob's integrity after opening the package. If there are any problems please refer to the supplier.
2. Do not throw the packaging materials (plastic bag, foam, nails, packaging etc) in a place where children can easily access. Please dispose of packaging in an environmentally friendly manner.
3. Do not change the wiring under any circumstances.
4. Dispose of the appliance in an environmentally friendly manner.
5. If the power cord is damaged, it must be replaced by the manufacturer its service agent or similarly qualified persons in order to avoid a hazard.
6. The appliance is not intended for use by persons (including children) with reduced physical, sensory or mental capabilities, or lack of experience and knowledge, unless they have been given supervision or instruction.
7. Children should be supervised to ensure that they do not play with the appliance.
8. Do not stare at the hob elements when the appliance is working.
9. Accessible parts may become hot during use. To avoid burns young children should be kept away.
10. If the surface is cracked, switch off the appliance to avoid the possibility of electric shock.
11. CAUTION: The surface temperature exceeds 95 °C.

Danger of fire: Do not store items on the cooking surfaces.

CAUTION: The cooking process has to be supervised. short term cooking process has to be supervised continuously.

WARNING: Unattended cooking on a hob with fat or oil can be dangerous and may result in a fire.

Use

Directions and suggestions for using

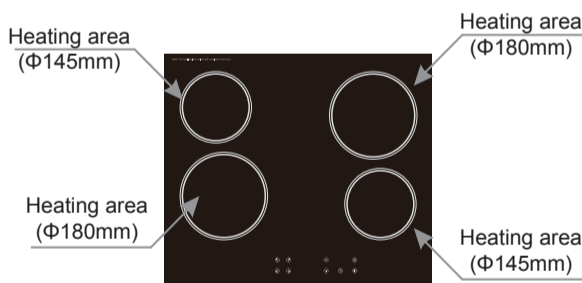
1. Do not touch the built-in ceramic hob with wet hands or feet.
2. Do not operate the built-in electric hob when you are bare footed.
3. Do not let young children operate the built-in ceramic hob.
4. Please disconnect the power supply before you do any maintenance and cleaning.

5. When the built-in ceramic hob is working, the temperature of the electric hob and the ambience becomes higher, so please do not touch it and keep the children away from it.
6. A steam cleaner must not be used for cleaning the appliance.
7. The appliance is not intended to be operated by means of an external timer or separate remote-control system.
8. The built-in ceramic hob must be built into a heat resistant cabinet.
9. Some smoking may occur when first used. Leave on for a short period to burn off excess sealant.

Operation of the top with the heating area

An appropriately selected pan saves energy. A pan should have a thick, flat base with a diameter equal to the zone diameter as in that case heat is transferred most efficiently.

Advice on the use of cooking tops To save energy and to have a longer life of the ceramic hob, we advise using pans with flat bottoms and with a diameter not less than the diameter of the hob. Care must be taken that fluids do not spill on the ceramic hob. Never leave the hob zone on without pans on them or with empty pans, and never use the hob to heat the plates. Switch on the hob after having set the pans on them. Once switched off, the zone remain warm for a while, do not touch. Switch off the heating element before removing the pans.



Touch control

- All operations are performed by means of the touch controls on the control panel.
- Each touch control has a corresponding visual display (indicator light).
- You will hear a beep each time a touch is registered.

Switching on the ceramic hob

- Press the ON/OFF button (fig.1) to switch on the appliance.
- The hob will beep once and all cooking zone indicators will light up briefly. Indicating that the hob has entered stand-by mode.

Notice: Make the next step within one minute, otherwise the controller will automatically shut down.

Switching on a cooking zone and setting a power level

- Press the cooking zone select button (fig.2) for the zone you want to use.
- Select the heat level required (1-9) by using the up and down buttons (fig.3). By holding down either of these buttons, the value on the heat level display will adjust up or down.

Note: when the power displayed 0, press the down button, the power will set to 9

Switching off the ceramic hob

1. Press the ON/OFF button, the hob will switch off. It is possible to turn the hob off at any time by pressing the ON/OFF button.
2. Press the up or down buttons to 0, then hob will switch off.

After a zone is switched off, the corresponding heat level display will show a flashing letter "H". This means that the temperature of the zone is above 60°C and is therefore still high enough to cause injury.

- When the temperature of the zone falls below 60°C the letter "H" will go out. It is still possible to burn yourself on a hob zone, even when its temperature has dropped below 60°C.

IMPORTANT: The residual heat indicator will disappear if the mains supply to the product is cut.

Locking the ceramic hob

To lock the ceramic hob, press the safety lock button (fig.4) while the appliance is switched on. With the safety lock activated, all buttons on the control panel will be disabled, except the ON/OFF button. To disable the safety lock feature, press the safety lock button again. And you are then able to adjust the heat level of any zone on the hob.



fig.1



fig.2



fig.3



fig.4

Timer

Your hob has a timer which you can set (from 1 to 99 minutes) for each cooking zone. At the end of the countdown period, a buzzer will sound and the relevant cooking zone will be switched off.

- Select the cooking zone (fig.2) and heat level (fig.3).
- Press the timer button (fig.5), and then use the up and down buttons to set the countdown time.
- Each time the timer up or down button is pressed, the timer display will increase or decrease in 1 minute increments.



fig.5

Safety cut-off

- If one or more of the cooking zones are accidentally left on, a safety cut-off will activate after a certain period of time. The length of time depends on the set power level for that zone. The table on the right gives the time limits for each power level.
- If more than one zone is operating when one of the zones reaches its safety cut-off point, only the zone that has reached its safety cut-off point will switch off.

Power level	Time limit (hours)
1-2	6
3-4	5
5	4
6-9	1.5

Technical Data

Model	Power Supply	Power(W)		Size (mm)	Built-in Hole Size (mm)
CACC1	AC 220-240 V /50Hz	1200W(145mm)	1800W(180mm)	580X510X40	564(L)X494(W)

Utensils

Use pans with flat bottoms. Uneven or thin bottoms will waste energy and are slow to cook.

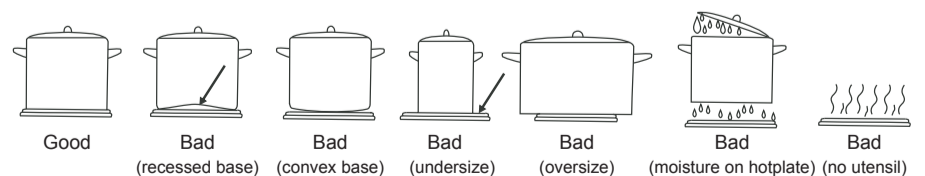
Use pans slightly larger than the hotplates. Smaller pans will waste energy.

Do not use oversized pans. More than 50mm overhang can overheat cooktop components and can cause fine cracks in the enamel hob which will trap dirt.

Use only dry utensils. Do not place wet or steamy parts (eg.lids) on the hotplates.

Do not use pots and pans that are unsteady and likely to rock or overbalance.

Do not operate the cooktop for an extended time without utensil on the hotplate.



Cleaning

Turn off the mains to the equipment before carrying out any maintenance and wait for it cool down. We advise using lukewarm water and detergents to clean enameled elements. Never use abrasive products. Rinse the glass worktop with water and dry using a soft cloth.

Use sponges or a moist cloth to clean the tops, and remember that water in excess can damage the electric elements. Clean tough stains using non abrasive detergents, or warm vinegar.

Clean the electric tops using a moist cloth, then lightly oil the the top when it is still warm.

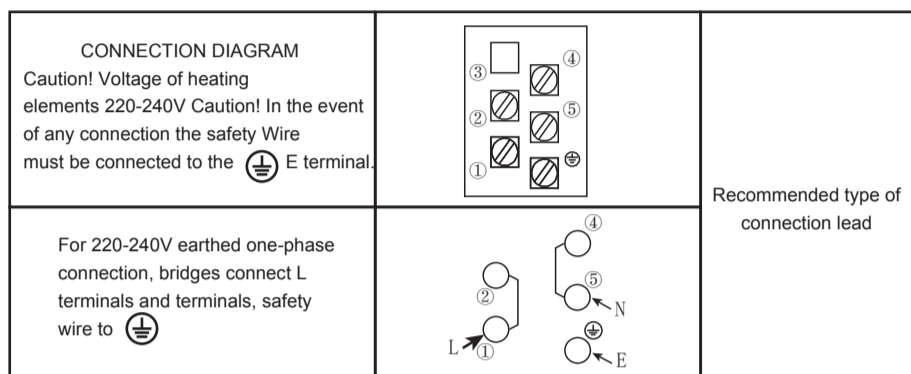
Installation

Electrical connection

Appliances with three-pole cable are set up for operation with alternating current at the voltage and frequency indicated on the rating plate Look at the connection wiring diagram. The earth conductor is yellow/green. The connection to the electricity supply must be made by a qualified person and following the regulations in force. When the appliance is to be installed above a built-in oven, the two appliances must be connected separately. The supply cable must be so positioned that no point can reach a temperature 50° C higher than ambient temperature. Also check that the supply system has an effective earth connection and corresponds to the standards in force and that the breaker can be reached easily when the appliance is installed.

Fitting guidelines

The voltage rating of the hob heating elements is 220-240V .Appliance with three-pole cable are set up for operation current at the voltage and frequency indicated on the rating plate Look at the connection wiring diagram. The earth conductor is yellow/green. The connection to the electricity supply must be made by a qualified person and following the regulations in force. When the appliance is to be installed above a built-in oven, the two appliances must be connected separately, to make it easier to take the appliances out and for electrical safety.



All-poles disconnection must be incorporated in the fixed wiring in accordance with wiring rules and allow disconnection of the appliance after installation by a switch in the fixed wiring.

If the appliance you have purchased is not fitted with a mains power lead a power lead resistant to a temperature of at least 90°C must be used.

Otherwise, the electrical safety If the appliance may be put at risk.

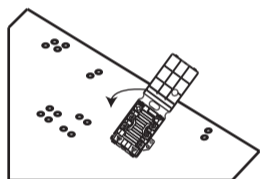
The manufacturer declines all responsibility for damage to persons or things caused by non-observance of the above prescriptions or by interference with any part of the appliance.



WARNING

Close the cable clamp after making the electrical connection. Close the terminal board cover by twisting it down.

TERMINAL BOARD

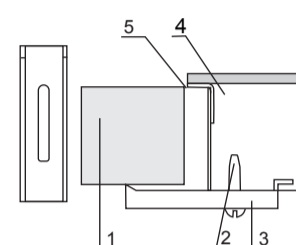
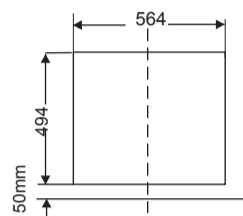
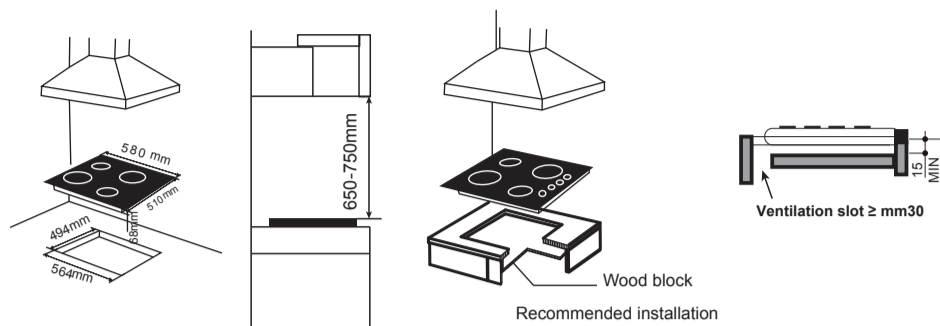


The manufacturer refuses all responsibility if the standards in force are not respected.

TECHNICAL INFORMATION FOR INSTALLATION PERSONNEL:

This appliance must be installed only by authorised personnel and in accordance with the regulations of Electricity authorities. The wall and bench surfaces must be capable of sustaining temperatures of 95 degrees Celsius. All laminates, fixing adhesive and surfacing materials should be certified suitable for this temperature. Do not install it near fire hazard place (like curtain etc).

According to the picture as follows, cut the square hole in bench and place the built-in electric hob in it. Your hob can be fitted to any worktop with a thickness of 40 to 50 mm.

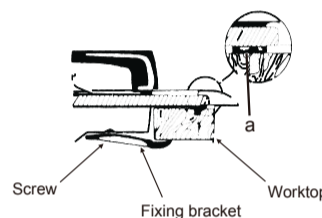


- 1-worktop
- 2-screw
- 3-bracket
- 4-hob
- 5-hob seal

Inserting and fixing the hob

Before inserting the hob into the work surface, place the adhesive seals around the underside edge. It is important to fix this gasket evenly without gaps or overlapping to prevent liquids from seeping underneath the hob.

1. Place the gasket around the bottom edge of the hobs as shown in the illustration overleaf.
2. Place the hob in the installation opening and push it down so that the hob is resting firmly on the cabinet.
3. Secure the hob in position using the fixing brackets supplied.



Secure the hob to the underside of the worktop using the fixings provided. Screw one end of the bracket into the pre-drilled holes in the underside of the hob. The other end of the bracket should be located underneath the worktop to secure the hob in position.

Note 1 :

Fire resistant material (eg ceramic tiles) is required to 450mm above burner top on the wall or vertical structures are not permitted within 200 mm from burner.

Note 2:

No overhanging surface or rangehood and exhaust system are permitted within 650 mm above burner tops.

Note 3:

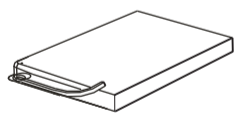
Leave at least 50 mm clearance between the base of the appliance and a combustible surface.

Never leave the packing components (plastic bags, nails, foamed polystyrene, etc..) within the reach of the children since they are a source of potential danger.

The hob has a special seal which prevents liquid from entering the cabinet. Follow these instructions to correctly apply it.

Seal:

Detach the seals from their backing, that the transparent protection still adheres to the seal itself. Turn over the hob and correctly position seal under the edge of the hob itself, so that the outer part of the seal itself perfectly matches the outer edge of the hob. Evenly and securely fix the seal to the hob, pressing it firmly in place.



Scraper for cleaning the hob

CLEANING AND MAINTENANCE

-When cleaning do not use cleaning agents with a strong abrasive effect, such as e.g. scouring powders containing an abrasive, abrasive compounds, abrasive stones, pumice stones, wire brushes and so on. They may scratch the hob surface, causing irreversible damage.

-Large spillages that are firmly stuck to the hob can be removed by a special scraper. Be careful not to damage the ceramic hob frame when doing this.

Caution!

The sharp blade should always be protected by adjusting the cover (just push it with your thumb). Injuries are possible so be careful when using this instrument-keep out of reach of children.

Appropriate light cleaning or washing products are recommended, such as warm water with a little washing up liquid or cleaning products for stainless steel sinks.

TROUBLE SHOOTING

Malfunction	Solution
Hob doesn't work	<ul style="list-style-type: none"> •Check the connection of wires •Check the fuse and the current limit
There is some smoke when it is working	<ul style="list-style-type: none"> •It is normal the first time you use. •Clean the around the electric hob and the heating area.
The wire is damaged	<ul style="list-style-type: none"> •Contact the nearest maintenance center to change the part.

WARNING :

The appliance and its accessible parts become hot during use.

Care should be taken to avoid touching heating elements.

Children less than 8 years of age shall be kept away unless continuously supervised.

This appliance can be used by children aged from 8 years and above and persons with reduced physical, sensory or mental capabilities or lack of experience and knowledge if they have been given supervision or instruction concerning use of the appliance in a safe way and understand the hazards involved. Children shall not play with the appliance. Cleaning and user maintenance shall not be made by children without supervision.

WARNING :

Unattended cooking on a hob with fat or oil can be dangerous and may result in fire.

NEVER try to extinguish a fire with water, but switch off the appliance and then cover flame e.g. with a lid or a fire blanket.

WARNING : Danger of fire: do not store items on the cooking surfaces.

WARNING : If the surface is cracked, switch off the appliance to avoid the possibility of electric shock.

WARNING : A steam cleaner is not to be used.

WARNING : the appliance is not intended to be operated by means of an external timer or separate remote-control system.