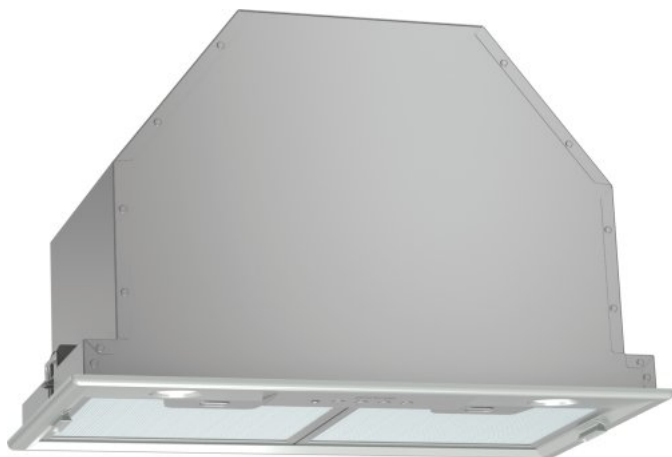


# BHC537X

**gorenje**  
*Life Simplified*

## Concealed



Halogen lighting

Useful tips

Capacity

CO - Built in

Venting with air extraction or recirculation

Energy class: **C**

Venting tube diameter: **15 cm**

Air flow by extraction version, step 1: **320 m³/h**

Air flow by extraction version, step 2: **490 m³/h**

Air flow by extraction version, step 3: **640 m³/h**

Electronic control

Control setting: **Button control**

Number of speed settings: **3**

Lamp type: **Halogen**

On/off light switch

Number of lights: **2**

Power of lights: **40 W**

Airflow boost position: **730 m³/h**

Filter material: **Aluminium**

Washable grease filter

Number of motors: **1**

Noise (max level): **66 dB(A)re 1 pW**

Height: **330 mm**

Annual energy consumption: **108.3 kWh**

Dimensions of the product (W×H×D): **52.2 × 33 × 28.4 cm**

Net weight: **7.5 kg**

Gross weight: **10 kg**

Connection rating: **290 W**

Product code: **671630**

EAN code: **3838782066580**



<https://au.gorenje.com/product/671630>