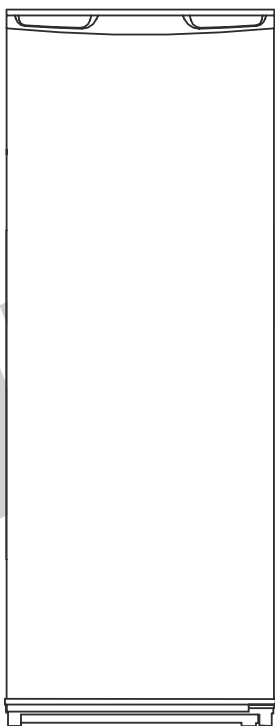


Hisense

USER'S OPERATION MANUAL






MODEL : HR6VFF177A

Before operating the unit, please read this manual thoroughly,
and retain for future reference

Operating Instructions

Dear customer,

To enable you to use your new freezer effectively and safely, please read this instruction book carefully before you start the appliance, which contains important information for installation, safe use and maintenance of this appliance. Please keep the book for future reference and remember to pass it on to the new owner. The following symbol will be found in the book to guide you through the instruction:

Guide to use the instruction book			
	Warnings		Operating instructions
	Tips and notes		

Warnings are stressed with a warning triangle or with signal words (**Warning!**, **Caution!**, **Important!**), which are provided in the interest of your safety. Ensure that you understand them all before installing and using this appliance.

Supplementary information regarding operation and practical applications of the appliance appear after this symbol.

Tips and notes will inform you with necessary knowledge of how to use the appliance economically and environmentally.

Operating instructions presented in the section of “Trouble shooting” contain instructions for correction of possible malfunctions by users. If these instructions are not sufficient, contact the Hisense Australia service number. .

INDEX

Operating Instructions	2
Important Safety Instructions	4
Installation Instruction	6
Description of the Appliance	7
Using Your Appliance	8
Thermostat Control	9
Door reversal	10
Hints and Tips	12
Trouble Shooting	13
Service/Repair	14
Disposal of the appliance	15

Important Safety Instructions

These warnings are provided in the interest of your safety. Ensure that you understand them all before installing or using this appliance. Your safety is of paramount importance. If you are still unsure about the meaning of these warnings, contact the Customer Care Department for assistance.

Intended use

This freezer is intended for use in the home. It is suitable for the storage of food at low temperature. If the appliance is used for purposes other than those intended or used incorrectly, no liability can be accepted by the manufacturer for any damage that may be caused. Alterations or changes to the refrigerator are not permitted for reasons of safety.

Prior to initial start-up

Check the appliance for transport damage. Under no circumstances should a damaged appliance be plugged in. In the event of serious damage, don't hesitate to contact your supplier.

Refrigerant

The refrigerant isobutene (**R600a**) is contained within the refrigerant circuit of the appliance, a natural gas with a high level of environmental compatibility, which is nevertheless flammable. During transportation and installation of the appliance, ensure that none of the components of the refrigerant circuit becomes damaged.

The refrigerant (R600a) is flammable.



Caution: risk of fire

If the refrigerant circuit should become damaged:

- Avoid open flames and sources of ignition.
- Thoroughly ventilate the room in which the appliance is situated.

The instructions shall include the warnings:

WARNING! —Keep ventilation openings, in the appliance enclosure or in the built-in structure, clear of obstruction.

WARNING! —Do not use mechanical devices or other means to accelerate the defrosting process, other than those recommended by the manufacturer.

WARNING! —Do not damage the refrigerant circuit.

WARNING! —Do not use electrical appliances inside the food storage compartments of the appliance.

WARNING! —This appliance is not intended for use by persons (including children) with reduced

physical, sensory or mental capabilities, or lack of experience and knowledge, unless they have been given supervision or instruction concerning use of the appliance by a person responsible for their safety.

WARNING!—Young children should be supervised to ensure that they do not play with the appliance

WARNING!—If the supply cord is damaged, it must be replaced by the manufacturer, its service agent or similarly qualified persons in order to avoid a hazard.

WARNING!—When disposing of the appliance, do so only at an authorized waste disposal centre. Do not expose to flame.

WARNING!—Please keep the appliance away from substance, which can cause ignition.

WARNING!--- Before obtaining access to terminals, all supply circuits must be disconnected.

WARNING!--- Please remove all the doors before you dispose your refrigerator.

WARNING!--- The fridge is only applied with power supply of single phase alternating current of 220~240V/50Hz. If fluctuation of voltage in the district of user is so large that the voltage exceeds the above scope, for safety sake, be sure to apply A.C. Automatic voltage regulator of more than 350W to the fridge. The fridge must employ a special power socket instead of common one with other electric appliances. Its plug must match the socket with ground wire.

WARNING!--- Do not store explosive substances such as aerosol cans with a flammable propellant in this appliance.

WARNING!--- This appliance is intended to be used in household and similar applications such as

- staff kitchen areas in shops, offices and other working environments;
- farm houses and by clients in hotels, motels and other residential type environments;
- bed and breakfast type environments;
- catering and similar non-retail applications

WARNING!---Keep burning candles,lamps and other items with naked flames away from the appliance so that do not set the appliance on fire.

Safety of children

Packaging (e.g. wraps, polystyrene) can be dangerous for children. There is a risk of suffocation! Keep packaging materials away from children!

Remember to dispose of old appliances in accordance with local laws. Pull out the mains plug, cut off the mains cable, break or remove spring or bolt catches if fixed. And ensure that children cannot lock themselves in the appliance when playing (there is risk of suffocation) or involve themselves in other dangers, for children cannot recognize the hazard present in household appliances themselves. Therefore, it is very important for parents to make adequate supervision and never let children play with the appliance!

Daily operation

Containers with flammable gases or liquids can leak at low temperature. There is a risk of explosion! Do not store any container with flammable materials such as spray cans in the refrigerator.

Do not operate any electrical appliance in the refrigerator (e.g. electric ice cream makers, mixers etc.).

Before cleaning the appliance, always switch off the appliance and unplug it, or pull the house fuse or switch off the circuit breaker.

In case of malfunction

If a malfunction occurs, please look first in the "Trouble Shooting" section for help. If the information given there does not help, just leave it alone and ask your supplier for help. Under no circumstances should you attempt to repair the appliance yourself.

Remove transport packaging

The appliance and the interior fittings are protected for transportation. Pull off the adhesive tape on the left and right side of the door. You can remove any remnants of adhesive using white spirit. Remove all adhesive tape and packing pieces from the interior of the appliance.

Installation Instruction

Before installing, carefully read the instruction in order to avoid a certain number of problems.

Positioning

Position the appliance away from sources of heat such as stoves, radiators, direct sunlight etc. Maximum performance and safety are guaranteed by maintaining the correct indoor temperature for the class of unit concerned, as specified on the rating plate. This application perform well in 10~43°C.

IMPORTANT! -There is a need of good ventilation around the fridge for easy dissipation of heat, high efficiency of refrigeration and low power consumption. For this purpose, sufficient clear space should be available around the fridge. It is advisable for there to be 75mm separating the back of the fridge to the wall, at least 100mm of space at its two sides, height of over 100mm from its top and a clear space upfront to allow the doors to open 160 Degrees.

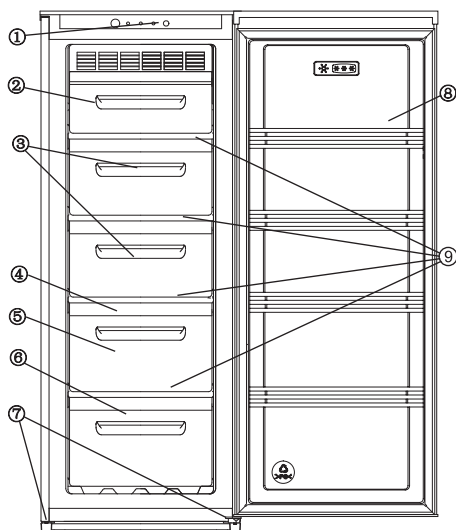
Appliances must not be exposed to rain. Sufficient air must be allowed to circulate in the lower rear section of appliances, as poor air circulation can affect performance. Built-in appliances should be positioned away from heat sources such as heaters and direct sunlight.

Leveling

The appliance should be level in order to eliminate rocking. To make the appliance level, it should be upright and both adjusters should be firmly contacted with the floor. You can also adjust the level by screwing out the appropriate level adjuster at the front (use your fingers or a suitable spanner), but much care should be taken when moving this appliance since it should be heavy.

Description of the Appliance

View of the appliance



- 1. Control panel 2. Baffler 3. Upper drawers 4. Drawers**
5. Ice tray (inside) 6. Lower drawer 7. Caster 8. Door
9. Shelves

Note:

Due to unceasing modification of our products your refrigerator may be slightly different from this Instruction Manual, but its functions and using methods remain the same.

Freezer chamber

Freezing and storing frozen foods including ice cream, etc.

Ice tray

Making ice, pour cool boiled water into ice tray up to 4/5 of its volume, place it in freezer top tray-ice should form within 2 hours. When you want ice cubes, please twist the ice tray slightly, and the ice cubes are separated from the ice tray. But do not bend it, otherwise it will crack.

Drawers in freezer

Freezing or storing foods. The quick-freeze foods must be evenly placed in drawer, and put them together to store after freezing.

IMPORTANT! – in order to make the most of the volume of the fresh food storage compartment and frozen-food storage compartment, the user can remove one or more drawers, out of the appliance, according to your daily use.

Using Your Appliance

Before use

Remove all securing tapes. Wash the inside of the appliance with lukewarm water added with a little bicarbonate of soda (5ml to 0.5 liter of water). Do not use soap or detergent since the smell may linger. After cleaning, dry the appliance thoroughly.

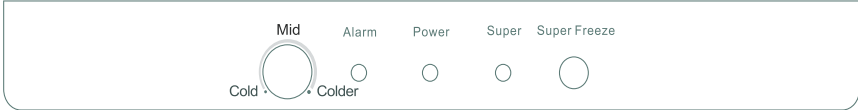
To start the appliance

Operating instructions

1. Allow the appliance to stand for 2 hours after installation.
2. Plug in the appliance and turn on the power.
3. Turn the thermostat control to the required setting. A midway setting is usually suitable for normal operation.
4. Leave the appliance for approximately 4 hours to reach the correct temperature before placing food inside.

Thermostat Control

The control panel that controls the temperature inside the freezer compartment is located inside the freezer.



- Alarm : extensive temperature indicator
- Power : electrical power indicator
- Super : Super Freeze indicator
- Super Freeze : Super Freeze button
- Super Freeze (button)

If you need the temperature inside freezer to drop quickly, please press this button and the indicator of super will be on. The unit runs in SUPER FREEZER.

If you need the appliance to stop the model of Super Freeze, please repress the Super Freeze(button) at the same time the indicator of super shuts off.

Warning! When the “super freeze”button is set on,the compressor works continuously to fast freeze much hot food.So you must turn off “super freeze”button to normal model in 24 hours.

Tips: When The unit has run in SUPER FREEZER for 2~3 hours or the temperature inside freezer reach your setting , stopped by your hand pressing the button again.

ALARM FOR FREEZER

If the power of appliance has been cut out for a long period of time for a long time or stopped for any reason and, the inside temperature has reached higher than degree ($\geq -8^{\circ}\text{C}$) then the alarm indicator will glow.

- When temperature $\geq -8^{\circ}\text{C}$, Excessive temperature indicator glows.
- When temperature $< -8^{\circ}\text{C}$, Excessive temperature indicator shuts off.

Starting up and temperature regulation

Insert the plug of the connection lead into the plug socket with protective earth contact. When the refrigerator compartment door is opened, the internal lighting is switched on.

Turning clockwise in direction Refrigerating unit on, the latter then operating automatically,set the knob to Mid or Colder.

Setting Cold means:

Highest temperature, warmest setting.

Setting Colder (end-stop) means:

Lowest temperature, coldest setting.

Important!- Normally we advise you select setting in the middle of Cold and Colder, if you want the temperature warmer or colder please turn the knob to lower or higher setting accordingly.
Be advised that for maximum efficiency we ask that you set your Freezer settings to suit the ambient temperature in your area.

Important!-High ambient temperatures (e.g. on hot summer days) and a cold setting on the temperature regulator (position Max) can cause the compressor to run continuously or even non-stop!

Reason: when the ambient temperature is high, the compressor must run continuously to maintain the low temperature in the appliance.

Door Reversal

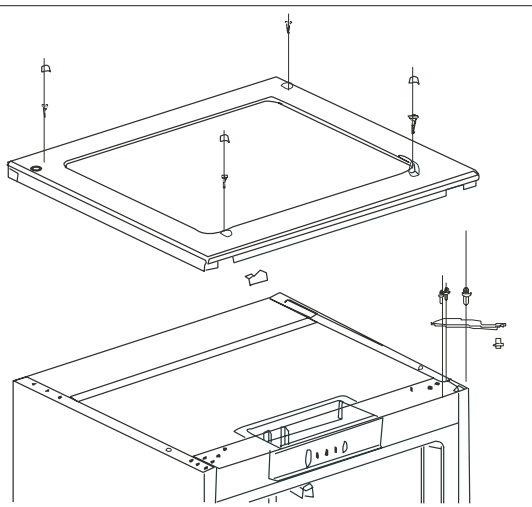
The side at which the door opens can be changed from the right side (as supplied) to the left side, if the installation site requires. We recommend 2 people to perform this.

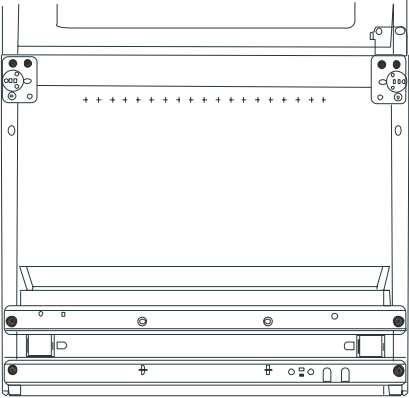
Before you start lean the freezer on its back on a 45 Degree angle. The second person should hold this into position. In order to gain access to the base, you should rest it on soft foam packaging or similar material to avoid damaging the cooling pipes at the rear of the refrigerator.

Warning!

When changing the side at which the door opens, the appliance must not be connected to the mains. Remove plug from the mains beforehand.

1. Remove the cover of screws, and unscrew the screw, then remove the top cover.
2. Remove the decoration of the top cover, and fix the decoration on the opposite side.
3. Unscrew the upper hinge and remove it
4. Unscrew the upper hinge pivot and place it on the opposite side.
5. Remove the door and the lift upper hinge cover on the door, and fix it on the opposite side.



<p>6. Lay the appliance onto it's back side at 45 Degrees, remove the screws and the lower hinge.</p> <p>7. Remove the front leg fixing board and fix it on the opposite side. Position and fix the lower hinge by screws.</p>	
<p>8. lift up the appliance to vertical position and fix the upper hinge then adjusting the door on the horizontal level and fix the screw.</p> <p>9. Position and screw the top cover, laying the appliance on an appropriate place.</p>	



Warning!

Reposition, level the appliance, wait for at least two hours and then connect it to the power socket. In case you do not want to carry out the above mentioned operations, contact the nearest After Sales Service Centre. The After Sales Service specialist will carry out the reversibility of the doors at your cost.

After having reversed the opening direction of the door check that all the screws are properly tightened and that the magnetic seal adheres to the cabinet. .

Hints and Tips

Food storage

Avoid buying frozen food if you cannot store it. Please place the frozen foods you bought into the freezer as soon as you arrive home:

- Do not crowd food together.
- Try to allow air to circulate around each item.
- Do not store food uncovered.

Ensure the foods placed in the freezer are dated and labeled, and used them in date order, so you can consume them at its best. Remember to remove suspect food from your freezer and keep it clean inside.

Energy saving tips

1. Do not place warm foods into the appliance. Allow warm foods to cool first. Do not install the appliance near cookers, radiators or other sources of warmth. High ambient temperatures cause longer, more frequent operation of the compressor
2. In order to make the cooling system work efficiently, please make sure the side plates and back plate of the product are with some distance from the wall. It is strongly recommended that its back is 75mm away from the wall, its sides at least have a space of 100mm separately and the height from over its top is not less than 100mm.
3. When the product works, please do not open the door too often or leave the door open any longer than necessary.
4. Do not set temperature any colder than necessary.
5. Store food logically. Do not exceed the storage period specified.

In the event of a power failure

If there is a power failure when the appliance works, don't open the door. If the temperature inside your freezer should rise, do not refreeze the food without checking its state.

The following guidelines will assist you:

- Ice cream once thawed should be discarded.
- Bread and cakes: Can be refrozen without danger.
- Shellfish: Should be refrigerated and used up quickly.
- Cooked dishes: i.e. casserole should be refrigerated and used up.
- Large pieces of meat: Can be refrozen if there are ice crystals remaining within them.
- Small joints: Should be cooked and then refrozen as cooked dishes.
- Chicken: Should be cooked and refrozen as a fresh dish.

Trouble Shooting

A malfunction may be caused by only a minor fault that you can rectify yourself using the following instructions. Do not perform any other work on the appliance if the following information does not provide assistance in your specific case.

Important!

Repairs to refrigerators/freezers may only be performed by competent service engineers. Improper repairs can give rise to significant hazards for the user. If your appliance needs repairing, please contact our service hotline for assistance.

Symptom	Possible Cause	Remedy
Appliance does not work.	Appliance is not switched on.	Switch on the appliance.
	Mains plug is not plugged in or is loose.	Insert mains plug.
	Fuse has blown or is defective.	Check fuse, replace if necessary.
	Socket is defective.	Mains malfunctions are to be corrected by an electrician.
Appliance cools too much.	Temperature is set too cold.	Turn the temperature regulator to a warmer setting temporarily.
The food is too warm.	Temperature is not properly adjusted.	Please look in the "initial Start Up" section.
	Door was open for an extended period.	Open the door only as long as necessary.
	A large quantity of warm food was placed in the appliance within the last 24 hours.	Turn the temperature regulation to a colder setting temporarily.
	The appliance is near a heat source.	Please look in the "installation Instruction" section.
Heavy build-up of frost, possibly also on the door seal.	Door seal is not air-tight(possibly after reversing the door).	Shape the warned door seal by hand such that it sits correctly.
Unusual noises.	Appliance is not level.	Readjust the feet.
	The appliance is touching the wall or other objects.	Move the appliance slightly.

	A component, e.g. a pipe, on the rear of the appliance is touching another part of the appliance or the wall.	If necessary, carefully bend the component out of the way.
The compressor does not start immediately after changing the temperature setting.	This is normal, no error has occurred.	The compressor starts after a period of time.

Noises during Operation

The following noises are characteristic of refrigeration appliances:

Clicks

Whenever the compressor switches on or off, a click can be heard.

Humming

As soon as the compressor is in operation, you can hear it humming.

Bubbling

When refrigerant flows into thin tubes, you can hear bubbling or splashing noises.

Splashing

Even after the compressor has been switched off, this noise can be heard for a short time.

Service/Repair

Any electrical work required to install this appliance should be carried out by a qualified approved service agents.

- This product should be serviced by an authorized Service agent, and only genuine spare parts should be used.
- Under no circumstances should you attempt to repair the appliance yourself. Repairs carried out by inexperienced persons may cause injury or more serious malfunctioning.
- This appliance contains hydrocarbons in its cooling unit; maintenance and recharging must therefore only be carried out by authorized technicians.


Disposal of the appliance

It is prohibited to dispose of this appliance in domestic household waste.

For disposal there are several possibilities:

- a) The municipality has established collection systems ,where electronic waste can be disposed of at least free of charge to the user.
- b) As old products contain valuable resources ,they can be sold to scrap metal dealers.

Wild disposal of waste in forests and landscapes endangers your health when hazardous substances leak into the ground-water and fin their way into the food chain .

	Correct Disposal of this product
	<p>This marking indicates that this product should not be disposed with other household wastes throughout the EU. To prevent possible harm to the environment or human health from uncontrolled waste disposal, recycle it responsibly to promote the sustainable reuse of material resources. To return your used device, please use the return and collection systems or contact the retailer where the product was purchased. They can take this product for environmental safe recycling.</p>

HISENSE WARRANTY

TERMS AND CONDITIONS

1. HISENSE Australia will provide parts and labour to you the Customer as set out herein.
2. Nothing in the warranty, limits any rights you may have under the trade practices act or any other Commonwealth or State Legislation. Such rights cannot be changed by the conditions in this warranty. Subject to the conditions below this appliance is warranted by Hisense and/or its Agents to be free from defects in materials and workmanship for a period of 36 months from the date of purchase (the "Warranty period")
3. This warranty: -
 - a. covers products purchased as NEW, manufactured for use in Mainland Australia and Tasmania;
 - b. commences from the date of purchase as listed on the Customers invoice;
 - c. provides for the labour and replacement parts necessary to maintain your product in good operating condition as specified in this warranty however, if repair is needed because of product failure during normal usage, Hisense has the option to repair or replace the defective product or part of the product with a product or part of the product of like kind and quality and a replacement part may be new or reconditioned of like kind and quality and may cost less than the original product purchased and no charges or refunds will be made based on the replacement product cost difference;
 - d. applies only to the original purchaser and cannot be transferred;
 - e. is only applicable when your appliance is used in a domestic environment;
 - f. covers products for commercial purposes for a period of 90 Days from the date of purchase.
4. Product Identification
 - a. Hisense reserves the right to reject claims for any services or work where the Customer requesting such work or services from Hisense and/or its agents cannot produce for verification the serial number and the proof of purchase as per original purchase invoice.
 - b. The warranty will be voided if any Serial Number sticker provided to be placed on the equipment is damaged, modified or removed.
 - c. In the event that a request for repair is made against a warranty where the Serial Number sticker is not attached to the product or the customer cannot produce for verification the original invoice, the repairer will not affect any repairs on the product and the Customer will be charged a service call-out fee.
5. What is covered by this warranty
 - a. The equipment is covered for faulty workmanship on parts that have failed under normal use which are contained within the product.
 - b. Hisense and/or its Agents will decide if there are any defects in the material and/or workmanship
 - c. This warranty is only applicable for repairs on declared equipment carried out within Mainland Australia and Tasmania
6. What is not Covered by this warranty (excluded):-
 - a. any damage or failure:
 - i. of equipment due to the product being inadequately serviced to manufacturer's recommendations;
 - ii. resulting from environmental conditions including and not limited to dirt, dust, rodents, insects, rust, corrosion, salt build-up, of any part of the product including its parts; or
 - iii. resulting from excessive use "fair wear and tear";
 - iv. resulting from poor installation including and not limited to positioning and externally fitted equipment such as plumbing and drainage, cabling, antennae or due to Incompatibility of connected equipment;
 - v. to the product caused by overheating as a result of sitting or positioning of the equipment, where there is not provision for adequate ventilation or a dust free environment;
 - vi. caused if your appliance has been dismantled, repaired or serviced by any person other than someone authorised by Hisense;
 - vii. to a product or components, caused by power surges or spikes, including and not limited to, mains power and telecommunications connections, or to other unspecified sources, incorrect power current, voltage fluctuation, amperage fluctuation, rust or corrosion;
 - viii. due to a dropped product; collision with another object, use of which is not designed, negligence, accident or deliberate misuse, theft, abuse, vandalism, flood, fire, earthquake, electrical storms or any other act of God or any war related events;
 - b. costs of attendance and testing where no mechanical or electrical failure is identified;
 - c. initial setup and installation of the product;
 - d. Normal maintenance costs and costs incurred through the installation of items listed as requiring periodic replacement;
 - e. products with removed or altered serial numbers;
 - f. consumables such as but not limited to bulbs/globes, batteries, remote controls;
 - g. removal and reinstallation of an internal component not performed by a factory authorised service centre;
 - h. cosmetic or structural items;
 - i. Any failures due to the interference from or to other products and/or sources;
7. The Warranty Ceases if: -
 - a. The product ceases to carry the original manufacturer's serial number or is sold at an auction;
 - b. The product is rented;
 - c. Damage to the product has occurred as listed in point 6b.
 - d. Failure to pay monies owing on invoices as a result of non warranty work been carried out at the request of the end user as per point 15.
8. Neither Hisense nor its representatives provide loan equipment under the terms of this warranty.
9. Our goods come with guarantees that cannot be excluded under the Australian Consumer Laws. You are entitled to a replacement or refund for a major failure and for compensation for any other reasonably foreseeable loss or damage. You are also entitled to have the goods repaired or replaced if the goods fail to be of acceptable quality and the failure does not amount to a major failure.
10. Any unauthorised access to the internal hardware of the product will void this warranty.
11. Replacement items are "Like for like" and is not "new for old" and does not indicate in any way that a faulty product will be replaced with a new part or unit. "Like for like" may either be a quality checked (QC) refurbished or reconditioned unit of the same or later batch of model/size/specifications
12. If your product is 130 litres capacity or under, and/or if you reside outside of the service coverage area of your nearest authorised service agent, this warranty does not cover the costs of transportation or travel expenses to and from your home.
13. Hisense accepts no liability for items that are lost, damaged, or stolen as a result of freight, transport or storage. If you are required to transport the appliance to an authorised service centre, you must ensure that it is securely packed and insured.
14. On Public Holidays or other periods when regular business and wholesale operations are temporarily ceased, repairer availability and warranty response times may extend beyond the standard response times due to the availability of repairers and parts.
15. Any repair performed on a product under the warranty where no fault can be found, or the item is deemed by Hisense, or an authorised Hisense agent, to be not faulty under this warranty, or the repair or fault is not covered under the warranty, a No Fault Found fee is payable by the warranty holder of a minimum of \$125 inc GST.
16. Any repairs or services required that are outside of the terms and conditions of the warranty can be carried out at the request of the customer or due to site attendance where fault is not covered under warranty as the product not been installed or setup correctly; a credit card may be required prior to the commencement of such services

WARRANTY CLAIMS PROCEDURE

Please retain this portion for your records

36 MONTHS IN HOME REPAIR WARRANTY

Hisense Australia will provide its nearest service centre for repairs under warranty. You will need to ensure that you have already called Hisense Warranty Centre and received a JOB NUMBER.

Before making a claim, please make sure that you understand the terms and conditions of the warranty

Check and ensure the installation of all power cables to the power point are secure and power is turned on, all cables leads and connectors are connected properly and that all switches are turned on and functioning. Check that there is power at the power point by using a small appliance.

Check that all settings are set according to the instruction manual.

Please keep this certificate in a safe place together with your product receipt. Should you need to make a claim, the responsibility of proof of ownership of the equipment is on you. If a claim is made that is found not to be covered under this warranty, or no faulty hardware components are found, you will be charged at Hisense or Hisense Authorised Service Center's standard service charge plus an administration fee.

PLEASE REFER TO THE TROUBLESHOOTING GUIDE AT THE END OF THIS MANUAL

Service Procedure

Please have your original invoice, model, and serial number ready. To receive service, you are required to:

Call 1800 447 367. Service claims may be made between 9:00am and 5:00pm AEST week-days excluding public holidays where a call representative will log your claim for processing.

You will be provided a JOB NUMBER

Normally under 24 hours of logging and receiving your proof of purchase for your claim, an Authorised Service Agent will contact you to proceed with claim.

WARRANTY REGISTRATION

In order to register your warranty, please fill out and return with a copy of your invoice to:
Hisense Warranty Registration
PO BOX 360 Ferntree Gully VIC 3156 Australia

Congratulations on your purchase, This Document sets out terms and conditions of your product warranty. Please Keep it with your proof of purchase information in a safe place for future reference should you require service to your product.

The Undersigned hereby acknowledges receipt of the Hisense warranty service provided. I have read and understand the conditions and terms of the warranty in its entirety.

NAME OF PURCHASER _____

SERIAL NUMBER _____

ADDRESS _____

STORE PURCHASED FROM _____

CITY _____ STATE _____ POSTCODE _____

CITY _____ STATE _____ POSTCODE _____

PHONE (____) _____

INVOICE NO. _____

MOBILE (____) _____

MODEL NO. _____

FAX (____) _____

DATE OF PURCHASE ____/____/____

SIGNATURE _____

Hisense