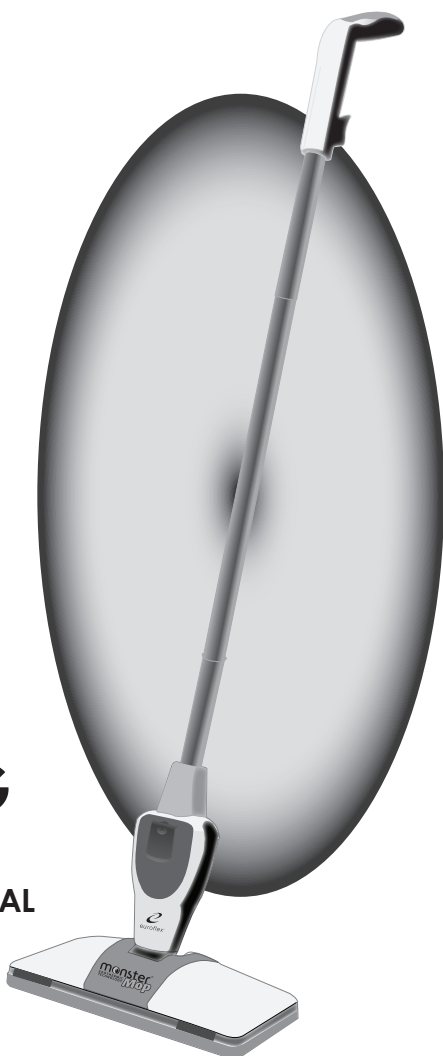


monster[®] EXOTHERMIC TECHNOLOGY *Mop*

MONSTER MOP CLEANING SYSTEM INSTRUCTION MANUAL



CUSTOMER SERVICE: 1800 663 866 (AUS)
0800 666 783 (NZ)

IMPORTANT SAFE T

SAVE THESE INSTRUCTIONS

When using an electrical appliance, basic safety precautions should always be observed, including the following:

Read all instructions before using this appliance.

WARNING: To reduce the risk of fire, electrical shock, or injury:

1. This appliance is authorized for household/domestic use only.
2. Do not use outdoors. Do not immerse the Monster Mop in water or other liquids.
3. Do not allow to be used as a toy. Close attention is necessary when used by or near children. Do not leave Monster Mop unattended. Always unplug unit when not in use.
4. Use only as described and for the uses described in this manual. Use only manufacturer's approved and supplied parts and accessories. Use of other accessories is not recommended and will void the warranty.
5. Always make sure the Handle Assembly is in the upright position before plugging in or unplugging. Keep cord away from heated surfaces (e.g., cooking surfaces), and sharp edges and corners.
6. Do not use if power cord or plug has been damaged, or if any part of appliance has been dropped, damaged, left outdoors, or dropped in water. Do not attempt to disassemble or repair appliance. Return it to manufacturer or an authorized service center for examination or repair.
7. Do not wrap cord around appliance. Unplug cord from appliance when not in use. Never carry by the cord, or yank to disconnect from an outlet. To unplug, always grasp plug to remove from outlet – do not pull on cord.
8. Do not handle cord or appliance with wet hands or without shoes on.
9. Look closely at Monster Mop Cleaning System and follow all labels and marking instructions found on the Monster Mop.
10. Do not put any objects into openings. Do not use with any opening blocked.
11. Keep hair, loose clothing, fingers, and all parts of body away from openings and moving parts.
12. Use caution near the Base of the appliance when it is plugged in. Plate on bottom of Base will become very hot when in use, and will cause burns if touched.
13. Use caution when changing pads and/or refilling the Tank while the Monster Mop is in use. The plate on the bottom of the Base is very hot. When the plate on the bottom of the mop is hot, never place the exposed plate directly on to a floor surface to avoid floor damage.
14. Be sure Tank Door is closed and remains closed during use.
15. Use ordinary tap water in the Tank. Use distilled or demineralized water in the Tank in hard water areas.
16. It is permissible to use a small quantity of a cleaning solution, sanitizer or fragrance in the Tank along with the water. Only the Monster brand of cleaning solution, sanitizer or fragrance should be used in the Tank. Follow the instructions on the package.
17. It is NOT recommended to use other brands of cleaning solutions,

TY INSTRUCTIONS

SAVE THESE INSTRUCTIONS

sanitizers or fragrances. In some cases other brands may include ingredients (such as ammonia in cleaning solutions) that when heated may cause the cleaner to produce noxious fumes.

18. Do not operate around flammable or combustible liquids such as gasoline, or in areas where fumes may be present.
19. The Monster Mop is not intended for space heating purposes.
20. To reduce the likelihood of circuit overload, do not operate another high wattage appliance on the same circuit. Plug in to a standard (220-240V, 50/60Hz) electrical outlet.
21. Do not use extension cords or outlets with inadequate voltage.
22. Store appliance indoors in a cool, dry place.
23. If appliance is damaged, it must be repaired by the manufacturer or its service agent.
24. This appliance is not intended for use by persons (including children) with reduced physical, sensory or mental capabilities, or lack of experience and knowledge, unless they have been given supervision or instruction concerning use of appliance by a person responsible for their safety.
25. Read and follow all important notices in this manual.
26. To reduce the risk of electric shock use only with power supply cord provided with the appliance.
27. Always attach plug to the appliance first, if using the appliance as a heated floor cleaner, then plug cord in the wall outlet. To disconnect, remove plug from wall outlet.
28. Unplug cleaner from electrical outlet when not in use and before cleaning it. Allow to cool before using the paper dusting wipes, and before cleaning.

CAUTIONS

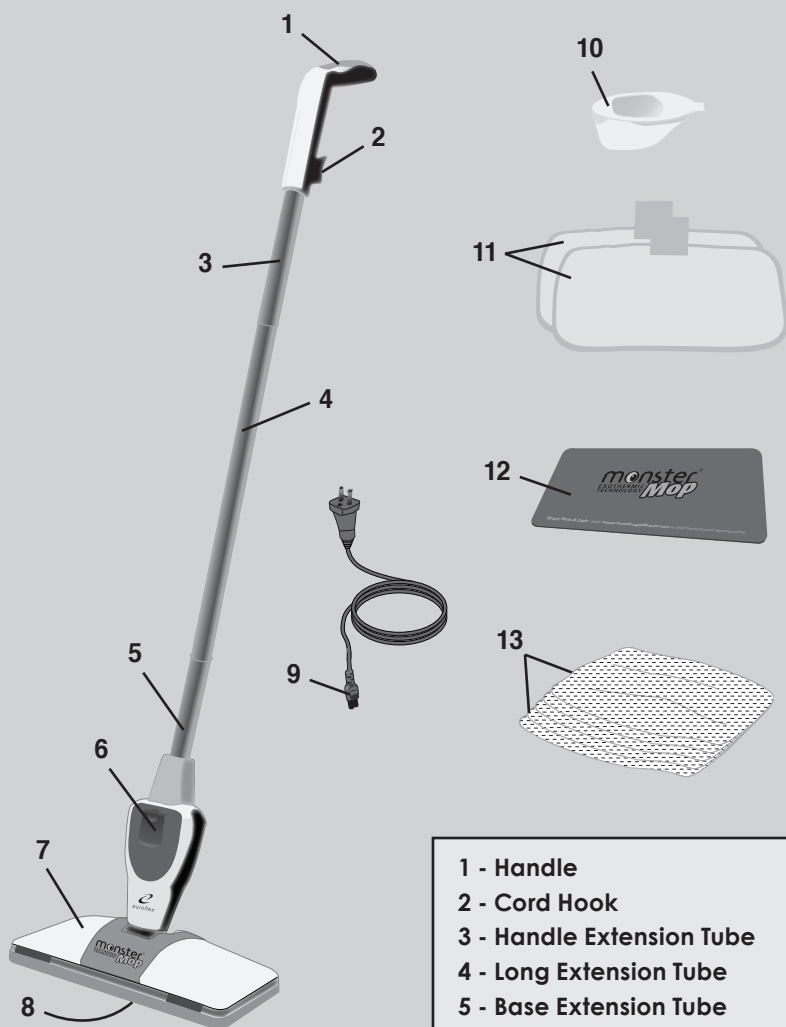
- **Do not use your Monster Mop Cleaning System without a Microfibre Pad or Paper Dusting Wipe attached to the Mop Base.**
- **When using HOT/WET Cleaning Mode, NEVER leave your Monster Mop in one spot on any surface for any period of time. Always keep the Monster Mop moving when in use. Place it on Mop Rest Pad when plugged in, or unplug it when not in use.**
- **Allow to cool on Mop Rest Pad before removing Pad and storing.**
- **SHOCK HAZARD! To provide continued protection against electric shock, disconnect power supply when not in use.**



This symbol indicates that the surface can become very hot and could cause burns on contact with skin.

IMPORTANT

Please read all of the instructions for use and Important Safety Instructions carefully. Remove and discard all packaging materials and keep them out of the reach of children.



Technical Data

Adapter Input: 220-240V~
50/60Hz

Power: 400 watts

ank Capacity: 100 ml/3.38 oz

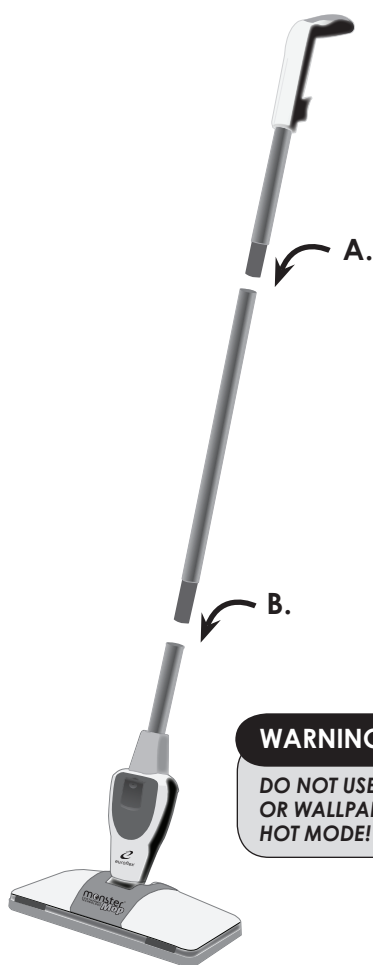
- 1 - Handle
- 2 - Cord Hook
- 3 - Handle Extension Tube
- 4 - Long Extension Tube
- 5 - Base Extension Tube
- 6 - Tank Door/Tank
- 7 - Mop Base
- 8 - Base Heat Plate
- 9 - Power Cord
- 10 - Fill Cup
- 11 - Microfibre Pad (2)
- 12 - Mop Rest Pad
- 13 - Paper Dusting Wipes (10)

The Monster Mop Cleaning System has multiple uses. In HOT/WET Mode: as a heavy-duty, moist-heat cleaner that is usable with: 1) water only; 2) water and Monster branded cleaning solution; 3) water and a drop or two of the Monster brand of Fragrance; 4) with Monster's Clean Blast Sanitizing Solution; or 5) to clean vertical tile surfaces or glass (showers, windows, etc). In HOT/WET Mode, the Monster Mop may be used on most sealed hard surfaces (except painted or wallpapered surfaces). **In DRY Mode:** use as a cordless floor duster or a vertical surface duster.

PLEASE BE SURE TO READ THE INSTRUCTIONS ON THE FOLLOWING PAGES BEFORE ATTEMPTING OPERATION.

1 Monster Mop Cleaning System Assembly

! FOR REALLY THOROUGH CLEANING, BEFORE USING THE MOP IN HOT/WET MODE, PRE-CLEAN THE FLOOR IN DRY MODE TO REMOVE DUST AND DEBRIS.



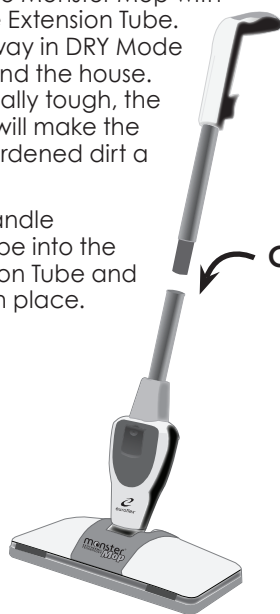
- A.** Insert the Handle Extension Tube into the Long Extension Tube and press firmly in place.
- B.** Insert Long Extension Tube into Base Extension Tube and press firmly in place.

For cleaning odd, raised or vertical surfaces (i.e., granite, marble, tile), or windows, use the Monster Mop with only the Handle Extension Tube. Also, use it this way in DRY Mode for dusting around the house. When a job is really tough, the shorter handle will make the scrubbing of hardened dirt a breeze.

- C.** Insert the Handle Extension Tube into the Base Extension Tube and press firmly in place.

WARNING!

DO NOT USE MOP ON PAINTED OR WALLPAPERED SURFACES IN HOT MODE!



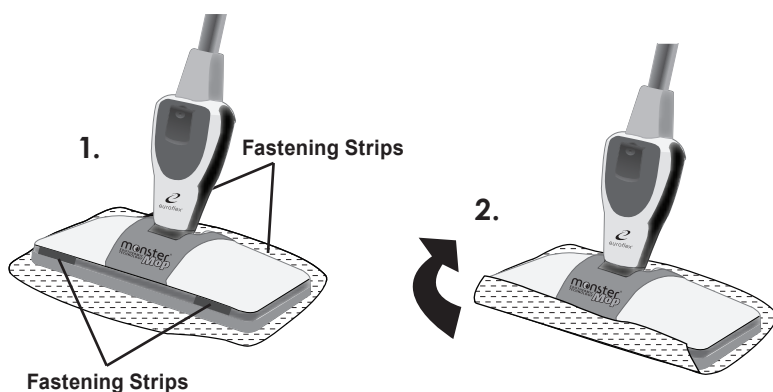
2 DRY Cleaning Mode

THERE IS NO NEED TO USE LIQUIDS IN THE TANK OR THE POWER CORD WHEN DRY CLEANING!

Use the Paper Dusting Wipes only when the Monster Mop is completely cool.

A. Attach Paper Dusting Wipe

1. Place Paper Wipe on a flat surface and place Mop on the Wipe.
2. Fold Wipe up and over the front and back of the Mop Base, and press it firmly to the fastening strips.



B. Remove Paper Dusting Wipe

When Paper Dusting Wipe becomes dirty, remove it by pulling it away from the Fastening Strips. Dispose of dirty wipe and replace it with a clean wipe.

3 HOT/WET Cleaning Mode

WARNINGS

- To prevent floor damage, **ALWAYS** attach either a Microfibre Pad or a Paper Dusting Wipe to the Monster Mop. **NEVER** use Mop without one of these attachments affixed to the Base.
- **NEVER** clean Painted or Wallpapered surfaces in HOT/WET Mode!
- **SHOCK HAZARD!** To provide continued protection against electric shock, disconnect power supply when not in use.

If you are using the Heat Feature on your Monster Mop, you must attach a Microfibre Pad to the Base.

A. Attach Microfibre Pad

- Place Microfibre Pad on a flat surface with Tab facing up.
- Lower Mop on to Pad and press firmly to attach.



B. Fill Tank with Liquids

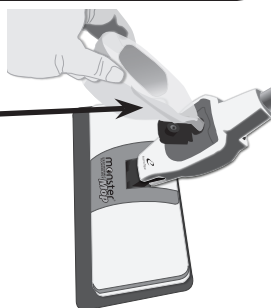
Fill the Tank before plugging in your Monster Mop Cleaning System.

IMPORTANT

Use tap water. Use distilled or demineralized water if tap water is too hard. Feel free to add a small quantity of the Monster brand of cleaning solution, sanitizer or fragrance. Follow instructions on the package.

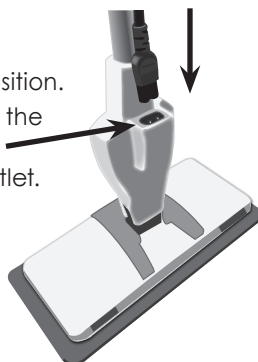
It is NOT recommended to use other brands of cleaning solutions, sanitizers or fragrances. In some cases other brands may include ingredients (such as ammonia in cleaning solutions) that when heated may cause the cleaner to produce noxious fumes.

- Open Tank Door by grasping and pulling it away from the Tank opening.
- Use the Fill Cup provided to SLOWLY add tap, distilled or demineralized water and/or the Monster brand of cleaning solution, sanitizer or fragrance to the Tank.
- Once filled, securely close Tank Door.



C. Plug In Power Cord

- Place the Monster Mop Handle in the upright position.
- Insert the power cord in the opening located on the back of the Mop Base, and press firmly in place.
- Plug other end of Power Cord in an electrical outlet.



! WAIT 2 MINUTES FOR UNIT TO HEAT. AFTER 2 MINUTES, lower Handle to automatically dampen the Microfibre Pad. Cleaning can start once the Handle has been lowered.

D. Using the Mop Rest Pad

It is important to use the Mop Rest Pad if the Mop is warm or hot.

CAUTION

The Mop Rest Pad is provided to prevent floor damage that can result from leaving a hot cleaner on the same spot for more than a few minutes. ALWAYS place Monster Mop on the Mop Rest Pad when not in use while plugged in, or while it is cooling before storage.



E. Remove Microfibre Pad

Your Microfibre Floor Pads include a Tab to assist with Pad removal.



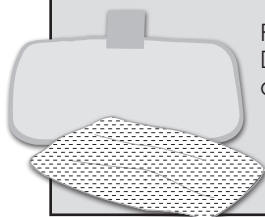
- Step down on the Tab and hold with your foot.
- Lift Mop up and away from Pad to remove.

NOTE: See "Maintenance & Cleaning" for Pad care and cleaning instructions.

WARNING

The Microfibre Pad will be hot - Use Caution! Care should be taken where the hot pad is placed. If cleaning is to continue, always attach a dry, clean pad to the Monster Mop Base. To prevent floor damage, Never place the hot Monster Mop on floor without a Microfibre Pad.

REPLACEMENT Microfibre PADS and PAPER DUSTING WIPES



Replacement packs of Microfibre Pads and Paper Dusting Wipes are available for purchase by phone, online or at a participating electrical appliance retailer.

To Order Replacement Pads and Dusting Wipes

Call: 1800 663 866 (Australia) or 0800 666 783 (NZ), or

Visit: www.monsterappliances.com.au

4 Using the Monster Mop

The Monster Mop is a multi use mop that gives you the freedom to choose a number of options in HOT/WET mode or choose to use it in cordless DRY mode.

Choose... tap water for chemical-free cleaning and...**Just add Heat**

Choose... the Monster brand of cleaning solution and...**Just add Heat**

Choose... the Monster brand of sanitizer and...**Just add Heat**

Choose... the Monster brand of fragrance and...**Just add Heat**

OR...

Choose... to dust floors and vertical surfaces in DRY mode with **no need for liquids or the power cord.**

WARNINGS

- **ALWAYS** attach either a Microfibre PAD or a PAPER DUSTING WIPE to your Monster Mop **BEFORE** use.
- **Never** leave Monster Mop in the same location for too long while it is in HOT/WET Mode – this can cause damage to surfaces.
- **ALWAYS** set the Mop on the Mop Rest Pad when not in use and plugged in, or when cooling before storage.
- **NEVER** use on painted or wallpapered surfaces in HOT/WET Mode.

- **FOR REALLY THOROUGH CLEANING, BEFORE USING THE MOP IN HOT/WET MODE, PRE-CLEAN THE FLOOR IN DRY MODE TO REMOVE DUST AND DEBRIS.**

A. DRY Cleaning Mode

DO NOT USE LIQUIDS OR PLUG IN THE POWER CORD when using the Monster Mop for sweeping/dusting. Make sure a Paper Dusting Wipe is attached to the Monster Mop Base Plate, then simply begin using.

B. HOT/WET Cleaning Mode

For Optimal Results

- First, clean the floor in DRY Mode to collect dust and loose debris.
- Then, proceed to clean the floor in HOT/WET Mode for deep cleaning.
- Be sure the Tank is filled with tap, distilled or demineralized water, with or without a Monster-approved additive, and the Tank Door is securely closed.
- Plug in the Monster Mop. After two (2) minutes the unit will heat up.
- Lower the Handle to disperse liquid to the Microfibre Pad to optimize cleaning. Cleaning can start once Handle is lowered.

More on next page...

- Keep the Monster Mop moving in a slow and steady motion to avoid over-saturation of the Microfibre Pad.
- Place Mop on the Mop Rest Pad when not in use.
- When finished using, unplug Mop and let it cool on Mop Rest Pad before removing Microfibre Pad and storing unit in a dry location.

IMPORTANT

The Monster Mop is calibrated to release liquid from the Tank to the Microfibre Pad in HOT/WET Mode, for optimal cleaning performance of the Pad. Liquids will automatically release on to the Microfibre Pad to keep it damp during cleaning. When liquids run out, add more liquids and replace the Microfibre Pad, if needed.

C. Refilling Tank and Replacing Pad During Use

During cleaning the Tank will become empty and need refilling. However, there is no need to refill the Tank at the exact moment it becomes empty. During cleaning the Microfibre Pad will become dirty (or too dry) and will need replacing.

The empty Tank should be refilled and the dirty Microfibre Pad should be replaced at the same time.

Note: *Each Microfibre Pad needs ONLY a tank full of liquids to create moist heat. The Tank holds exactly the right amount of liquids for each Microfibre Pad. When a dirty Pad is replaced with a clean Pad, refill the empty Tank with liquids to provide moisture to the clean Pad.*

To Fill Tank with Liquids:

- Open Tank door by grasping and pulling it away from the Tank opening
- Use the Fill Cup to SLOWLY add tap, distilled or demineralized water and/or the Monster brand of cleaning solution, sanitizer or fragrance to the Tank. *(It is normal to have some overflow due to bubbles inside the Tank).*
- Firmly push the Tank door closed.

To Replace Dirty Pad:

- Step down on the Tab and hold with your foot
- Lift Mop up and away from the dirty Pad to remove
- Place a clean Pad on the floor with Tab facing up.
- Lower Mop on to clean Pad and press firmly to attach.

Resume cleaning when the Tank has been refilled and the Pad replaced. Repeat the above steps until your floors are clean.

IMPORTANT

Use tap water. Use distilled or demineralized water if tap water is too hard.

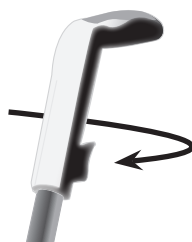
Feel free to add a small quantity of the Monster brand of cleaning solution, sanitizer or fragrance. Follow instructions on the package.

It is NOT recommended to use other brands of cleaning solutions, sanitizers or fragrances. In some cases other brands may include ingredients (such as ammonia in cleaning solutions), that when heated may cause the cleaner to produce noxious fumes.

D. The Cord Hook

The Cord Hook (on back of Handle) helps to keep the cord from being damaged and out of your way.

Pull the cord up to the Hook and loop it over the Hook to keep cord in place.



5 Cleaning & Rinsing Monster Mop

If distilled or demineralized water is used regularly, without cleaning solutions, sanitizers or fragrances, there is no need to clean the Tank.

Rinsing the Tank

If you use tap water, cleaning solutions, sanitizers or fragrances, we recommend periodic rinsing of the Monster Mop Tank to prevent build-up of sediment and residue. After 10-15 uses:

- **Be sure to unplug the unit from the electrical outlet and allow it to cool completely before cleaning.**
- Fill Water Tank 3/4 full with hot tap water.
- Shake unit several times and empty water into sink.

NOTE: NEVER HOLD THE UNIT UNDER TAP TO FILL – use the Fill Cup provided.

Cleaning the Tank

If you use tap water, cleaning solutions, sanitizers or fragrances, we recommend cleaning the Tank every 3-4 months (depending on residue buildup). Use a Hard Water Mineral Remover (found in most hardware or small appliance stores).

- Empty all excess liquid from the Tank.
- Follow manufacturer's instructions on cleaner package, and fill tank with specified amount of cleaner.
- Flush cleaner from Tank and fill with water. Rinse thoroughly and flush water from Tank. Repeat flushing with water until water from Tank comes out clear.
- Close the Tank Door and store appliance in a cool, dry place.

Cleaning of Tank and Monster Mop is the sole responsibility of appliance owner and is not covered by the product warranty.

6 Microfibre Pad Care & Cleaning

Clean Microfibre Pads regularly in one of two ways:

- Wash by hand (using only liquid detergent and warm water) or,
- Wash separately in your washing machine on delicate cycle (using only liquid detergent and warm water).
- **NEVER USE FABRIC SOFTENER OR BLEACH!**
- Allow pads to Air Dry (for maximum long term effectiveness), or in the dryer on the Lowest heat setting.

To Order Replacement Pads, Wipes and Parts
Call: 1800 663 866 (Australia) or 0800 666 783 (NZ), or
Visit: www.monsterappliances.com.au

This image shows a single sheet of white paper with horizontal ruling lines. The lines are evenly spaced and run across the width of the page. There are no margins, text, or other markings on the paper.

[illegible]

Customer Support

Customers needing assistance with their Monster Mop can call the Customer Support Line on the phone numbers listed below. Customers should also call the Customer Support Line if they require product warranty assistance or post-warranty servicing. Our friendly Customer Service Team can assist you to get the best cleaning results from your Monster Mop.

Monster Customer Support Line

AUSTRALIA 1800 663 866
NEW ZEALAND 0800 666 783

Monster Appliances (Australia)

8 Success Way
WANGARA WA 6065
AUSTRALIA

TEL: 08 9302 2526

Email: admin@monsterappliances.com.au

Website: www.monsterappliances.com.au

Euroflex New Zealand Ltd

PO BOX 305 650
Triton Plaza
North Shore 0757
NEW ZEALAND

TEL: 0800 666 783

Email: admin@monsterappliances.com.au

Website: www.monsterappliances.com.au

Euroflex SRL

Via dei Colli, 153
31058 Susegana (TV)
ITALY

Tel: +39 0438 661711

Email: euroflex@euroflex.tv

Website: www.euroflex.tv