

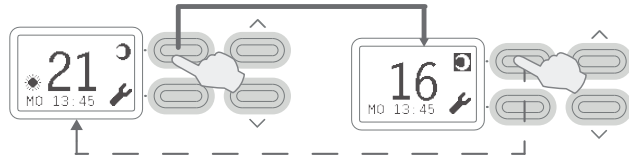


Manually Overriding Heat Modes

Sometimes, you may want to switch your current heat mode (from the default mode set for the current time) to the non-current mode e.g. from day/peak to night/off-peak or vice versa.

You may want to do this to allow you to adjust the desired temperature/thermostat of the non-current mode.

Or you may want to apply the other heat mode at this current moment (e.g. you may want to turn up the temperature temporarily without distorting the pre-programmed settings)



To manually switch heat modes (e.g. from night/off-peak to day/peak or vice versa), simply press the top left button next to the picture of either the sun or the moon. That icon should now get highlighted with a black background and the desired temperature in the display screen should also change (assuming the alternative heat mode has a different temperature).

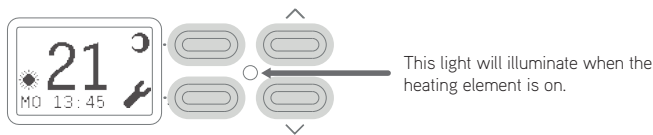
In the diagram shown, the desired temperature/thermostat has changed from 21 (set for day/peak mode) to 16 degrees (set for night/off peak mode).

Press the same button again to go back to the default heat mode for the current time.

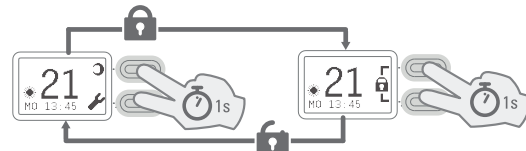
Note: for safety reasons, at 3am each day, if the heat mode has been manually overridden, the heater will automatically switch back to the default heat mode for that time. Manual overrides will also end when a new timing setting starts.



Heater on light



Key Lock



To lock the timer (e.g. so children cannot change the settings), press and hold the two left buttons for one second. A lock icon should show up on the right side of the display screen.

To unlock the timer, again press and hold the two left buttons for one second. The lock icon should disappear and the regular settings should reappear on the display screen.

NOBO Oslo Range

Programmable Timer for NTE4T Series

QUICK START GUIDE

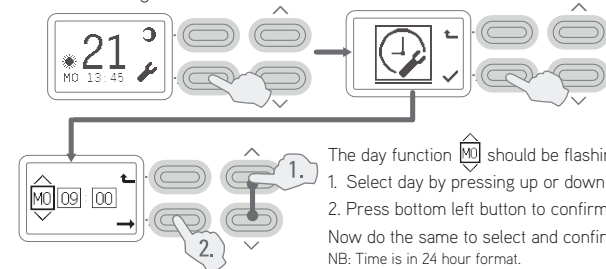
This instruction manual will show you how to use the timer on the heater. If you do not want to use the timer, please simply skip to the "Set current day and time" section to learn how to input the time. You can control the thermostat with the up and down buttons and turn the heater on and off with the switch on the side of the heater.



Set current day and time

Enter "settings" menu

Press bottom left button to select "set day/time" menu



The day function should be flashing.

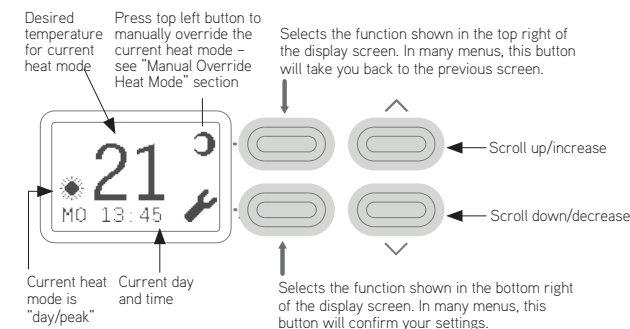
1. Select day by pressing up or down arrow.

2. Press bottom left button to confirm day.

Now do the same to select and confirm hour and minute of current time.

NB: Time is in 24 hour format.

Timer Overview



The timer has two heat modes: one for "day/peak" and one for "night/off peak". You can set a different temperature for both of these periods, for example, to keep the room warm during the day while you are using it and then to take the chill off the room when you are sleeping.

The desired temperature for each heat mode can be set to between 7°C and 30°C. Alternatively, you can just have the heater turn off in either mode.

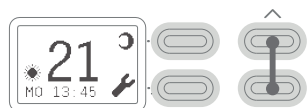
The icon in the bottom left of the screen (either a sun or moon symbol) will denote the current heat mode (either day/peak or night/off-peak).



Glen Dimplex Australia Pty Ltd
Unit 1, 21 Lionel Road
Mount Waverley VIC 3149
Ph: 1300 556 816 Fax: 1800 058 900
Email: sales@glendimplex.com.au
www.nobo.com.au

Glen Dimplex New Zealand Ltd
38 Harris Road
East Tamaki, Auckland
Ph: 09 274 8265 Fax: 09 274 8472
Email: sales@glendimplex.co.nz
www.nobo.co.nz

Setting desired temperature/thermostat



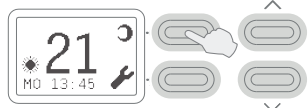
Setting temperature for current heat mode To set the desired temperature in the current heat mode (sun/moon icon in bottom left of screen), press the up/down arrows till you get the temperature you would like the heater to heat the room to.



Setting temperature for non-current heat mode If the mode you just set the temperature to was day/peak, then press the top left button to select night/off-peak mode (and vice versa). This is also known as "Manual Override" (see "Manually Overriding Heat Modes" section for more information). The icon in the top right should now be highlighted with a black background.

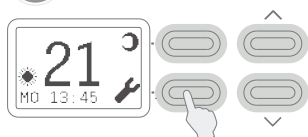


Now press the up and down buttons to set the desired temperature.

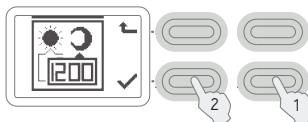


Then press the top left button again to go back to the mode appropriate for the current time.

Programme Timing Settings



Press the bottom left button to enter settings.

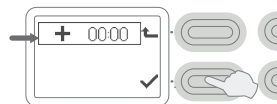


1. Press the down button until the Timing Settings menu appears.
2. Press the bottom left button to select.

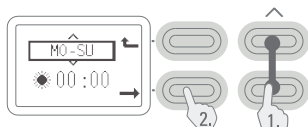


Adding a new timing setting.

This setting will apply until it gets to a time when a new setting takes over.



To add a new setting, select the "add timing" setting 00:00 (you may need to scroll to select it) and then press the bottom left button to confirm.

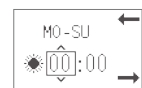


1. Select the day(s) you would like this timing setting to apply for by pressing the up/down buttons.
2. Then press the bottom left button to confirm.



Now do the same for whether you want this heat mode applied as a day/peak mode or night/off-peak mode.

Then press the bottom left button to confirm.



Scroll to select the hour of the day you want this heat mode to start from.

Then press the bottom left button to confirm.



SA-SU 08:30

Adding a new timing setting. *continued*



Scroll to select the minute within the hour of the day you want this heat mode to start from. Then press the bottom left button to confirm.

Good work. You have now set a time for when you want this heat mode to turn on. You will now need to create another timing setting that will take over from the previous setting (e.g. for the heater to then turn off or for it to heat at a lower temperature).

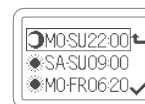
If you set the first heat mode as a day/peak mode, you will now need to set the next heat mode that will take over as a night/off-peak mode (and vice versa).

As an example you may want to set the first mode as a day/peak mode so that it heats your room to 22°C every day of the week, from 8am onwards. You may then want to create the night/off-peak mode that will take over at 6pm and turn off the heater (or heat at a lower temperature). Therefore every day from 8am-6pm, the heater will heat the room to 22°C and then turn off between 6pm and 8am.

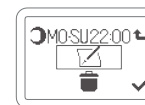


SA-SU 08:30

Editing an existing timing setting.

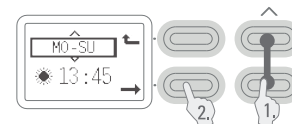


Use the up and down arrows to scroll through the timing settings until you find the one you want to change. Then press the bottom left button to confirm.



Use the up and down arrows to select the edit setting. Then press the bottom left button to confirm and edit the setting.

You can now edit the day, heat mode (day/peak vs night/off-peak), hour and minute in the same way you did when setting up the timing setting.



1. Select the day(s) you would like this timing setting to apply for by pressing the up/ down buttons.
2. Then press the bottom left button to confirm.

Now do the same for whether you want this timing applied as a day/peak mode or night/off-peak mode. Then press the bottom left button to confirm.

Select the hour of the day you want this heat mode to start from. Then press the bottom left button to confirm.

Select the minute within the hour of the day you want this heat mode to start from. Then press the bottom left button to confirm.

When you have finished editing timing settings, press the top left button, to return to the main screen.

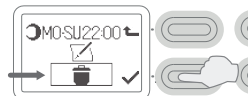


SA-SU 08:30

Deleting an existing timing setting



Use the up and down arrows to scroll through the timing settings until you find the one you want to delete. Then press the bottom left button to confirm.



Use the up and down arrows to select the delete setting . Then press the bottom left button to confirm and delete the setting.

When you have finished deleting timing settings, press the top left button, to return to the main screen.



Thank you for purchasing Nobo.
Please take a few minutes to register your
purchase. Please ensure you keep your
copy of the proof of purchase.

Register Product Warranty

Australia

Register at:

www.noboheating.com.au

OR call :1300 556 816

Glen Dimplex Australia Pty Ltd
1340 Ferntree Gully Road,
Scoresby, Victoria 3179

New Zealand

Register at:

www.nobo.co.nz

OR call : 09 274 8265

Glen Dimplex New Zealand Pty Ltd
38 Harris Road,
East Tamaki, Auckland 2013



Discovering all the latest styles,
new products and exciting promotions
visit www.noboheating.com.au



Warranty Registration

NOBO PRODUCT WARRANTY

This warranty is provided by Glen Dimplex Australia Pty Limited ABN 69 118 275 460 of 1340 Ferntree Gully Road, Scoresby, Victoria 3179 (Phone number 1300 556 816), or in New Zealand by Glen Dimplex Australasia Limited, New Zealand registration number 1506305, of 38 Harris Road, East Tamaki, Auckland, New Zealand (Phone number 09 2748265) (**we, us our**) in respect of the NOBO product which this warranty card has been included in the packaging for or otherwise supplied with (**the NOBO product**).

1. NOBO express warranty

Subject to the exclusions below, we warrant that the NOBO product will be free from defects caused by faulty workmanship and materials within:

(a) in the case of the NOBO product being used for personal, domestic or household purposes and the NOBO product is purchased as a brand new product from a retailer located in Australia or New Zealand, the NOBO product will come with a lifetime warranty; and

(b) in the case of the NOBO product being used for purposes other than personal, domestic or household purposes (including business or commercial use), a period of 12 months from the date the NOBO product is purchased as a brand new product from a retailer located in Australia or New Zealand. NOBO products are designed and intended for domestic use.

This express warranty is personal to the first person who acquires the NOBO product from the relevant retailer AND registers the product within 12 months from date of purchase at www.noboheating.com.au (AUS) / www.nobo.co.nz (NZ). Claims under this warranty cannot be made by anyone other than this person.

The benefits conferred by this express warranty are in addition to the Consumer Guarantees referred to in section 3 and any other statutory rights you may have under the Australian Consumer Law, the New Zealand Consumer Guarantees Act and/or other applicable laws.

2. Warranty exclusions

This express warranty does not apply where:

(a) the NOBO product has been installed, used or operated otherwise than in accordance with the product manual or other similar documentation provided to you with the NOBO product;

(b) the NOBO product requires repairs due to damage resulting from accident, misuse, incorrect installation, improper liquid spillage, cleaning or maintenance, unauthorised modification, use on an incorrect voltage, power surges and dips, voltage supply problems, tampering or unauthorised repairs by any persons, use of defective or incompatible accessories or exposure to abnormally corrosive conditions;

(c) the repair relates to the replacement of consumable parts such as fuses in plugs and bulbs or any other parts of the NOBO product which require routine replacement;

(d) you are unable to provide us with reasonable proof of purchase for the NOBO product;

(e) the breakdown occurs after the expiry of the express warranty period set out in section 1; or

(f) the NOBO product was not purchased in Australia or New Zealand as a brand new product.

3. Consumer Guarantees

Our goods come with guarantees that cannot be excluded under the Australian Consumer Law. You are entitled to a replacement or refund for a major failure and for compensation for any other reasonably foreseeable loss or damage. You are also entitled to have the goods repaired or replaced if the goods fail to be of acceptable quality and the failure does not amount to a major failure.

If you acquired the goods in New Zealand, similar provisions of the Consumer Guarantees Act 1993 may apply, but may be excluded if you acquired the goods for the purpose of a business.

4. How to make a claim

You may make a claim under this warranty by visiting our website at (www.noboheating.com.au in Australia, www.nobo.co.nz in New Zealand), contacting our customer care line (1300 556 816 in Australia, 09 2748265 in New Zealand) or visiting a Glen Dimplex service centre.

To make a valid claim under this warranty, you must:

(a) lodge the claim with us as soon as possible and no later than 14 days after you first become aware of the breakdown;

(b) provide us with the NOBO product serial number;

(c) provide us with reasonable proof of purchase for the NOBO product; and

(d) if required by us, provide us (or any person nominated by us) with access to the premises at which the NOBO product is located at times nominated by us (so that we can inspect the NOBO product).

5. Warranty claims

If you make a valid claim under this warranty and none of the exclusions set out in section 2 apply, we will, at our election, either repair the NOBO product or replace the NOBO product with a product of identical specification (or where the product is superseded or no longer in stock, with a product of as close a specification as possible).

Goods presented for repair may be replaced by refurbished goods of the same type rather than being repaired. Refurbished parts may be used to repair the goods.

NOBO products are designed and supplied for normal domestic use. We will not be liable to you under this warranty for business loss or damage of any kind whatsoever

6. Costs of warranty claim

Where you make a claim under this warranty, a Glen Dimplex authorised repairer may need to attend your premises to inspect the NOBO product. If the NOBO product is located in Australia, we may charge you a service call fee if a repairer will be required to travel more than 30 kilometers from the place of purchase. For further information, please contact Glen Dimplex on 1300 556 816 in Australia or 09 274 8265 in New Zealand. Alternatively, visit our website at www.noboheating.com.au in Australia or www.nobo.co.nz in New Zealand.

IMPORTANT
NOBO
WARRANTY
INFORMATION
DO NOT DISCARD

For Dimplex Service Enquiries or further warranty information, please call Dimplex Australia Phone: 1300 556 816 or visit www.noboheating.com.au, Dimplex New Zealand Phone: 09 2748265 or visit www.nobo.co.nz
Please retain this section of the form with your Dimplex user guide.

Product:

Model Number:

Serial Number:

Purchase Date: / /