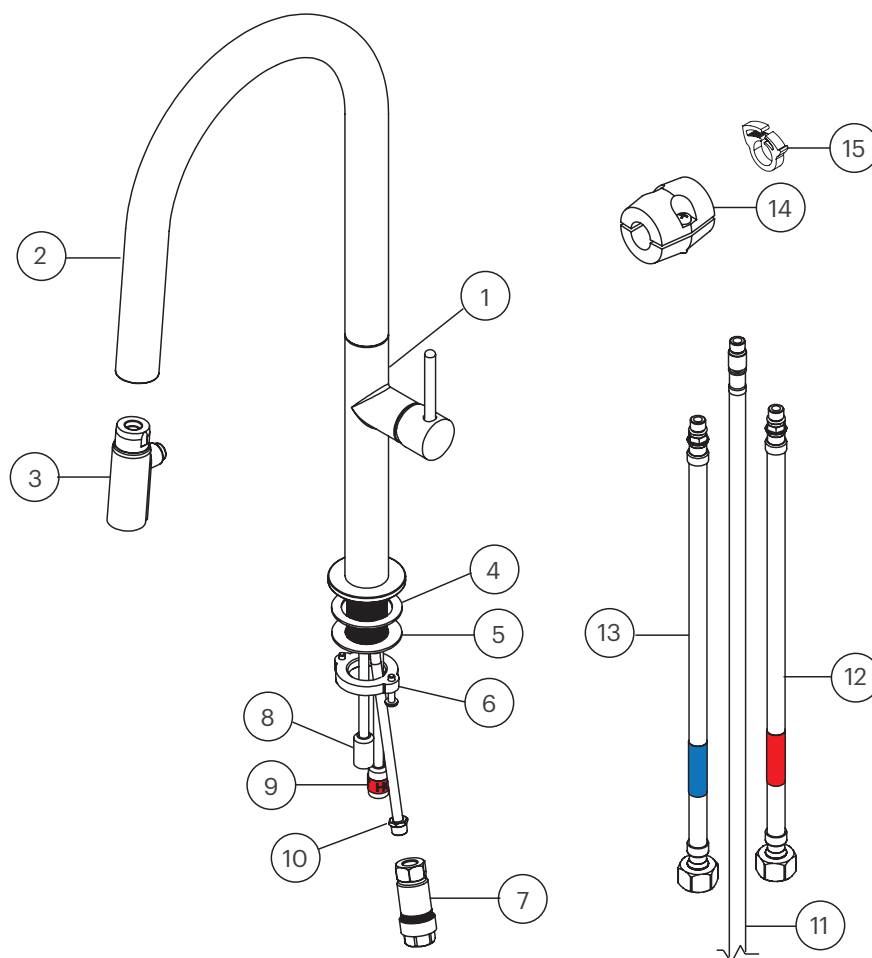


# Myhill by Rogerseller

Sink Mixer with  
Pull Out Spray

Installation  
Instructions

# Specification



## Myhill by Rogerseller Sink Mixer with Pull Out Spray

3606012601 — Chrome

**i** Other finishes available

## Parts List

- |                             |                                 |
|-----------------------------|---------------------------------|
| 1. Mixer Tap Body           | 10. Outlet Tail                 |
| 2. Spout                    | 11. 1.5m Pull Out Flexi Hose    |
| 3. Hand Piece               | 12. Hot Ramflex ACB Flexi Hose  |
| 4. Rubber Base Washer       | 13. Cold Ramflex ACB Flexi Hose |
| 5. Under Sink Fixing Washer | 14. Hose Weight                 |
| 6. Fixing Screw Assembly    | 15. Hose Clip                   |
| 7. Dual Check Valve         |                                 |
| 8. Cold Inlet Tail          |                                 |
| 9. Hot Inlet Tail           |                                 |

# Installation

## Step 1

Place the rubber base washer over the 1.5m pull out flexi hose and locate it on the underside of the mixer tap body.

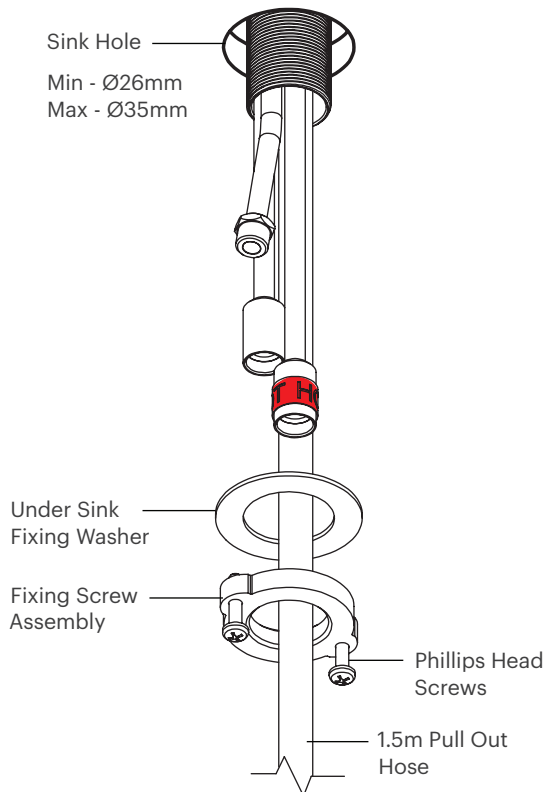
This seals out any water between the mixer tap body and the sink or counter top.

Place the pre-assembled mixer tap with rubber base washer and 1.5m pull out flexi hose through the sink hole.

## Step 2

From the underside, apply the under-sink fixing washer, then connect the fixing screw assembly by hand until firm.

Fix tightly in position using the two Phillips head screws on either side.

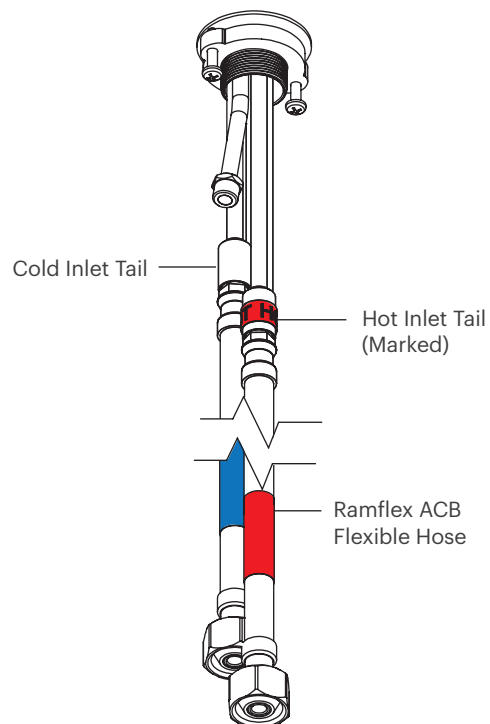


## Step 3

Connect the hot & cold ramflex anti-corrosion flexible hoses to the appropriate hot & cold female mixer inlet tails by screwing in a clockwise direction until just firm by hand.

## Step 4

If not already done so, connect the dual check valve assembly to the remaining threaded male outlet tail.



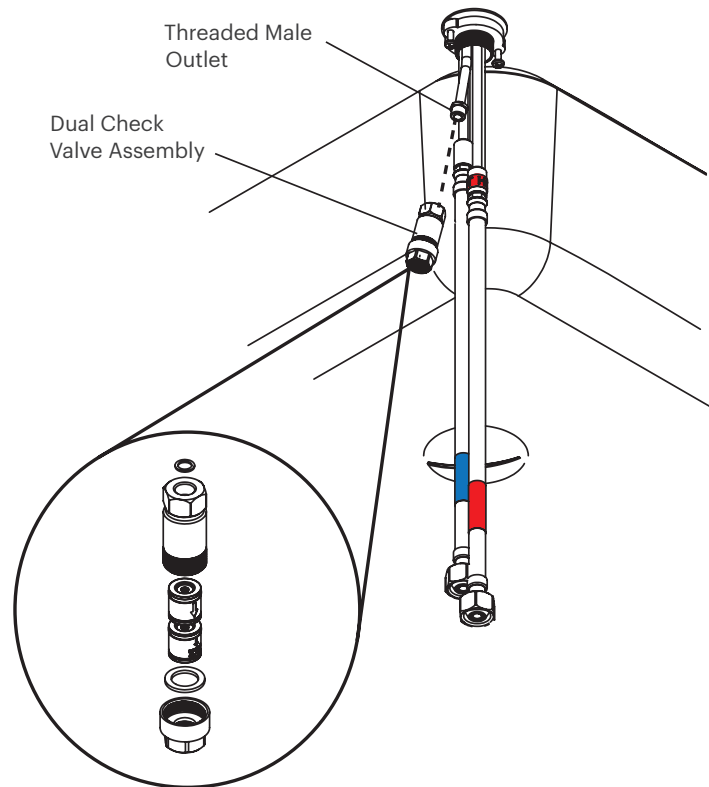
# Installation

## Step 5

Insert the supplied washer and connect the opposite end of the pull out hose into the dual check valve assembly by hand.

Remove any twist in the pull out hose as this will prevent the hose from moving smoothly through the mixer tap body. Secure using a 13mm spanner.

Note: If at any stage the flow becomes obstructed, unassemble the Dual Check Valve Assembly and clear any debris that may have collected there.

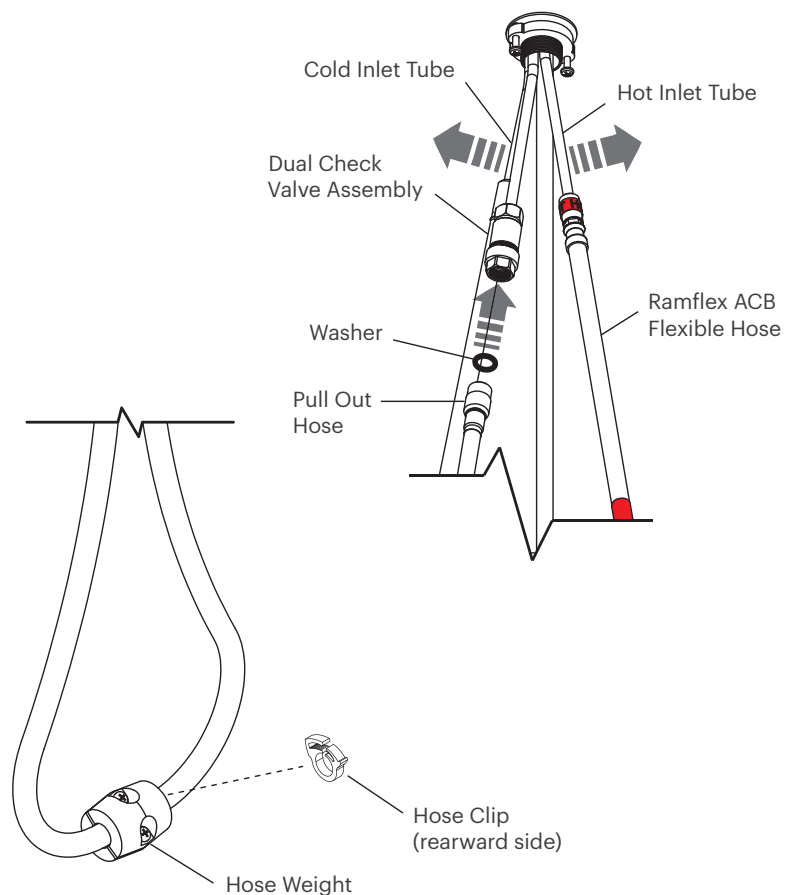


## Step 6

Maximise clearance on the pull out hose by bending the hot & cold inlet tubes slightly outward. (be careful not to kink the tubes)

Attach the supplied hose weight at the lowest point of the hose loop using the screws provided, then the hose clip is attached to the rearward side of the weight to prevent slippage on the hose.

Connect the hot and cold hoses to the mains supply. Introduce the mains water supply, then check for leaks and remedy as required.



## Specifications

It is a requirement of state plumbing codes that licensed plumbers carry out all tapware installations. All installations must comply with the relevant requirements of AS/NZS3500 and local plumbing codes.

### Pressure

Maximum Hydrostatic Pressure - 1000kpa

Recommended Maximum Hydrostatic Pressure - 500 kpa. (AS/NZS 3500)

Recommended Minimum Hydrostatic Pressure - 150 kpa.

Maximum Hydrostatic Pressure may be exceeded under test conditions only in accordance with AS/NZS 3500. Where hydrostatic pressure exceeds the maximum stated above, pressure limiting valves must be installed or warranty will be void.

### Temperature

Maximum Water Temperature - 80°C

For optimum performance, Hot and Cold inlet water pressure should be equal.

### Care and Maintenance

[1] Product should be inspected for surface damage prior to installation. [2] Cleaning and handling of all finishes must be performed carefully. [3] Clean products using a soft cloth with warm soapy water only. [4] Never use harsh detergents or abrasive cleaners as these will damage the product. [5] Water marks can be removed from Matt Finishes with an application of a carnauba wax based non-abrasive polish on a microfibre cloth. [6] Do not use undue pressure when cleaning and wipe in one direction only. [7] Contact with harsh chemicals such as hair dye, hair bleach etc will result in damage to the finish. [8] Tapware should never be installed using acetone silicones. [9] Avoid the use of wax based furniture creams as this can result in a build up of deposits which will detract from the appearance. [10] Damage to finishes arising from improper installation or post installation use or failure to observe the above care and cleaning instructions will void all warranty agreements.

Please note —

Dimensions are approximate. Information provided in these installation instructions is representative of the actual products available at the time of printing. Due to our policy of continuous product development, the designs and specifications depicted are subject to change without notice. Please confirm all particulars with your product expert prior to purchase. Each product is covered by a limited warranty. Full terms and conditions are available from your product expert.

**rogerseller**

rogerseller.com.au