

iQ500, Integrated Design Hood, 90 cm, clear glass black printed LJ97BAM60



LZ10ITP00	Long Life odor filter (replacement)
LZ11IBK61	Chimney extension 450-854 mm
LZ11IBN61	Chimney extension 187-360 mm
LZ11ITD11	Long Life recirculation kit external
LZ11IXB16	Clean Air Plus odor filter (replacement)
LZ11IXC16	Clean Air Plus recirc. kit external
LZ16IBB14	Clean Air Standard odor filter (repl.)
LZ16IBI14	Clean Air Standard recirculation kit

Seamlessly integrated glassVisor rangehood for maximum use of storage space in your cupboards.

- ✓ Storage space - Store up to 10 kg on each side of the hood.
- ✓ touchControl Plus : For a quick, easy and uncomplicated operation.
- ✓ LED light: Optimal visibility and atmosphere when cooking.
- ✓ The intensive setting temporarily increases the extraction rate when kitchen vapour is especially intense, with automatic revert to previous setting after 6 min.

Typology: Built-in/Built-under
Length electrical supply cord: 130.0 cm
Required niche size for installation (HxWxD): 340mm x 860.0mm x 300mm mm
Height of product, without chimney: 60 mm
Minimum distance above an electric cooktop: 600 mm
Minimum distance above a gas cooktop: 650 mm
Net weight: 13.7 kg
Type of control: Electronic
Number of power settings: 3-stages + intensive setting
Max. ducted extraction: 460 m³/h
Boost position output recirculating: 652 m³/h
Max. recirculation: 451 m³/h
Boost position air extraction: 749 m³/h
Number of lights: 3
Noise level: 63 dB(A) re 1pW
Diameter of air outlet: 120 / 150 mm
Grease filter material: Washable stainless steel
EAN code: 4242003906378
Power supply: 259 W
Voltage: 220-240 V
Frequency: 50 Hz
Plug type: Gardy plug w/ earthing
Installation type: Built-in



iQ500, Integrated Design Hood, 90 cm, clear glass black printed LJ97BAM60

Design

- Glass panel with touch control for an easy operation and enhanced vapor capture.
- Flush-fitted installation for a seamless integration in wall cupboards.
- Space efficient, compact design for extra storage possibilities on the hood and up to max. 10 kg storage weight per side.
- For recirculated extraction various recirculation kits are available as optional accessories.
- The fan and light are automatically turned on and off by opening and closing the glass panel.
- The light can also be independently turned on and off when the glass panel is closed by quick hand touch on control area.

Comfort

- Electronic controls via touchControl with Electronic display
- 3 power levels plus intensive setting
- Intensive setting with automatic reset function
- Intensive operation automatic revert - 6min
- 3 x 2 W LED
- Colour Temperature: 3500 K
- Light Intensity: 517 lux
- Suitable for ducted and re-circulating operation

Cleaning

- Dishwasher safe metal grease filters
- Stainless steel filter covers
- Easy to clean smooth surfaces and materials.

Performance

- Extraction rate according to EN 61591 ø 15 cm: max. Normal use 460 m³/h. Intensive 749 m³/h
- Noise level according to EN 60704-3 exhaust air:
- Max. normal use: 63 dB(A) re 1 pW
- Intensive: 73 dB(A) re 1 pW
- Noise min./max. Normal Level: 50/63 dB
- With the Clean Air Plus recirculation kit (available as accessory) your appliances reaches:
- Extraction rate in recirculation mode: Max. normal use: 451 m³/h
- Intensive: 652 m³/h
- Noise level in recirculation mode: Max. normal use: 67 dB(A) re 1 pW
- Intensive: 74 dB(A) re 1 pW

Planning and installation information

- Appliance dimensions (HxWxD): 340 x 897 x 298 mm
- Installation dimensions (HxWxD): 340 x 860 x 300 mm
- Please reference the built-in dimensions provided in the installation drawing
- Diameter pipe Ø 150 mm (Ø 120 mm enclosed)
- with one-way flap: prevents outside air from entering your kitchen
- Integrated Design Hood comfort installation: easy installation system
- Suitable for installation in bottomless wall cupboards.
- Enclosed spacers for installation in wall cupboards with maximum

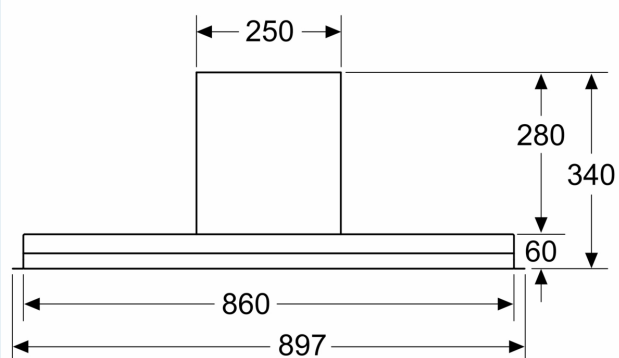
depth of up to 360 mm.

- For installation in higher wall cupboards chimney extensions are available as optional accessories.
- Chimney extensions are compatible with the available recirculation kits.
- Electrical cable length 1.3 m
- Power rating: 259 W

iQ500, Integrated Design Hood, 90 cm, clear glass black printed LJ97BAM60

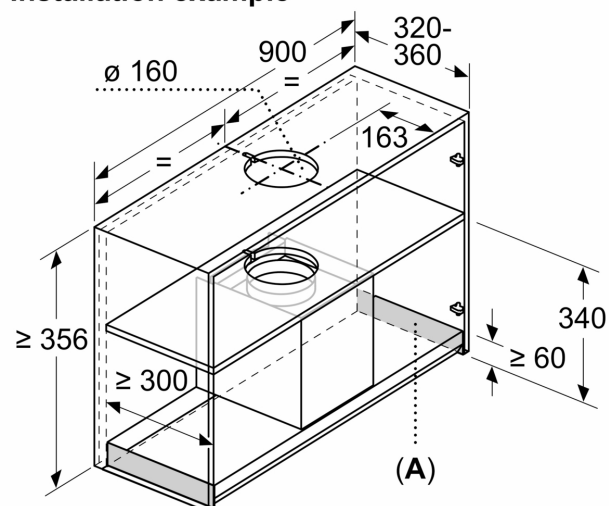
measurements in mm

Front view



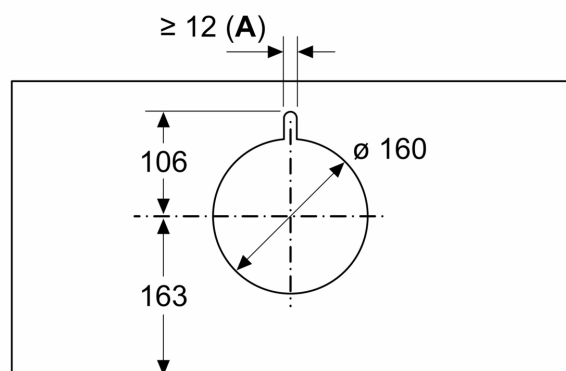
measurements in mm

Installation example



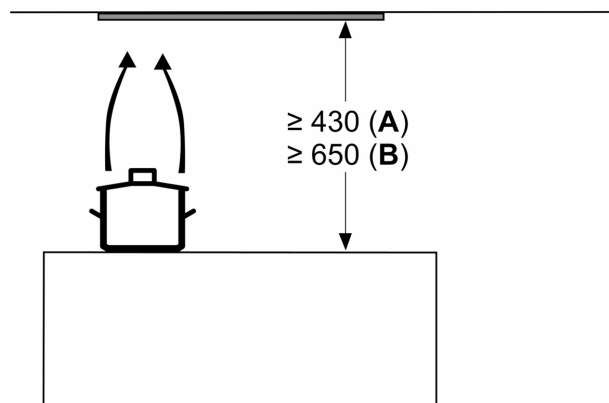
A: Area without hinges

measurements in mm



A: Cable bushing

measurements in mm



from upper edge of pan support

A: min. 430 electric

B: min. 650 gas

measurements in mm
side view

