

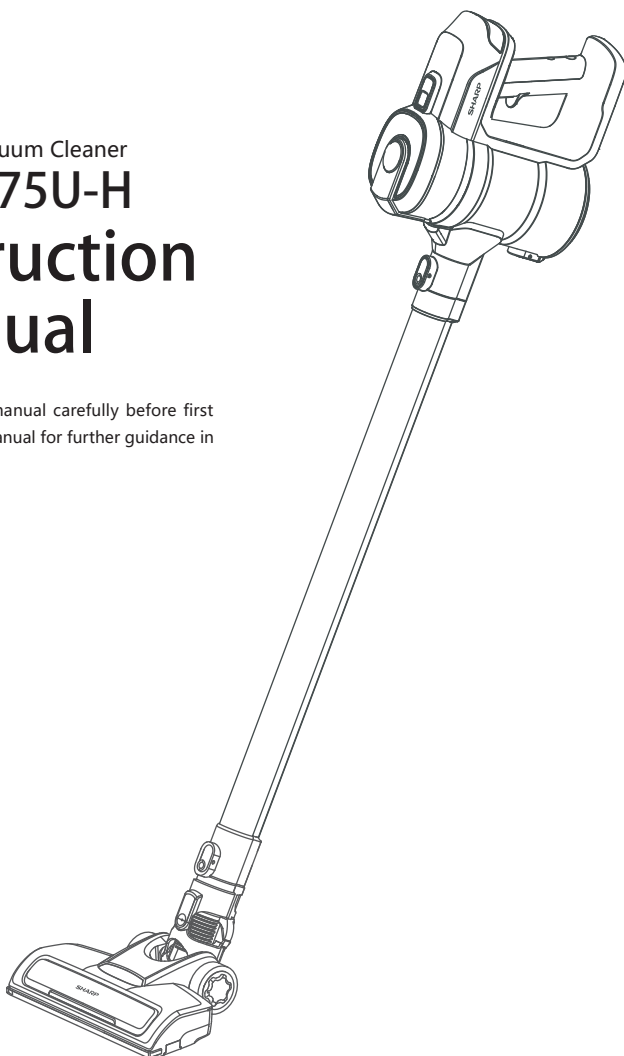
SHARP

Cordless Vacuum Cleaner

EC-SC75U-H

Instruction Manual

Read this user manual carefully before first use. Keep this manual for further guidance in case.



Thank you for your trust to sharp brand and purchase of our cordless vacuum cleaner. Hope you will have a pleasant time with our product!

Please read this user manual carefully to have a good knowledge of the operation of this product and to achieve the high performance as well.

This user manual includes the latest information as of the time of printing. We will take the full responsibility for the revision, interpretation and explanation of this manual. Our company's strategy is to upgrade the product constantly to meet customers' needs, so we reserve the right to change the product after printing it without notice.

If any question or trouble with our product, feel free to contact us.

Contents

SHARP

Important Safety Instructions	1-2
Instruction of Components	3
How to use	4-6
Troubleshooting	7

Important Safety Instructions

SHARP

When using an electrical appliance, basic precautions should always be followed, including the following:



READ ALL INSTRUCTIONS BEFORE USING THIS APPLIANCE.

To reduce the risk of fire, electric shock or injury, please read these instructions carefully:

Personal Safety:

- 1, Store it indoors in a dry place out of the reach of children.
- 2, Always use responsibly. This appliance can be used by children aged from 10 years and above and persons with reduced physical, sensory or mental capabilities or lack of experience and knowledge if they have been given supervision or instructions concerning use of the appliance in a safe way and understand the hazards involved;
- 3, Not intended for use by children age 10 and under. Close supervision is necessary when used or maintained near children.
- 4, Use only manufacturer' s recommended attachments as described in this manual; misuse or use of any accessory or attachment other than those recommended, may present a risk of personal injury;
- 5, Take extra care when cleaning stairs;
- 6, Keep the appliance and accessories away from hot surface;
- 7, Do not block the appliances openings or hinder air flow, keep openings free of any objects including dust, lint, clothing, fingers (and all parts of the body);

Electrical Safety:

- 1, Only use batteries and chargers supplied by the manufacturer;
- 2, Never modify the charger in any way;
- 3, The charger has been designed for a specific voltage. Always check that the voltage is the same as that stated on the rating plate;
- 4, A charger that is suitable for one type of battery pack may create a risk of fire when used with another battery pack;
- 5, Before using, check the charger cord for signs of damage or ageing. A damaged or entangled charger cord increases the risk of fire and electric shock;
- 6, Do not abuse the charger cord;
- 7, Never carry the charger by the cord;
- 8, Do not pull the cord to disconnect it from a socket, grasp the plug and pull to disconnect it;
- 9, Don' t wrap the cord around the charger when storing;
- 10, Keep the charger cord away from hot surfaces and sharp edges;
- 11, The supply cord cannot be replaced. If the cord is damaged, the charger should be discarded and replaced.
- 12, Do not handle the charger or the appliance with wet hands;
- 13, Do not store or charge the appliance outdoors;
- 14, The charger must be removed from the socket before removing the battery, cleaning

Important Safety Instructions

SHARP

or maintaining the appliance.

Battery Safety:

- 1、 This appliance includes Li-ion batteries, do not incinerate batteries or expose to high temperatures, as they may explode;
- 2、 Please use the original battery. Using the wrong type of battery may cause danger.
- 3、 The battery is prohibited to be disassembled, hit, squeezed or thrown into the fire. If severe bulging occurs, stop using it.
- 4、 To avoid liquid leakage, do not disassemble or collide the battery.
- 5、 Shorting the battery terminals may cause burns or fire;
- 6、 When you dispose the appliance, remove the battery and dispose the battery safely in accordance with local regulations.

Service:

- 1, Before using the appliance and after any impact, check for signs of wear of damage and repair as necessary;
- 2, Do not use the appliance if any part is damaged or defective;
- 3, Repairs should be carried out by a sharp approved service centre or a suitably qualified person in accordance with relevant safety regulations. Repairs by unqualified people could be dangerous;
- 4, Never modify the appliance in any way as this may increase the risk of personal injury;
- 5, Only use replacement parts or accessories provided or recommended by manufacturer.

Intended Use:

1. This machine can only be used as a dry vacuum cleaner;
2. This vacuum cleaner is not waterproof, please do not use to vacuum liquid or wet dust;
3. This vacuum cleaner can not be used to vacuum any burning or hot ash and dust;
4. Please use this machine as suggested in the user manual;
5. Please do not use this vacuum cleaner on concrete, tarmacadam or other rough surfaces;
6. This machine is a household vacuum cleaner, do not use it at any factory or commercial areas;
7. Do not use it to vacuum any construction waste or heavy metal dust;

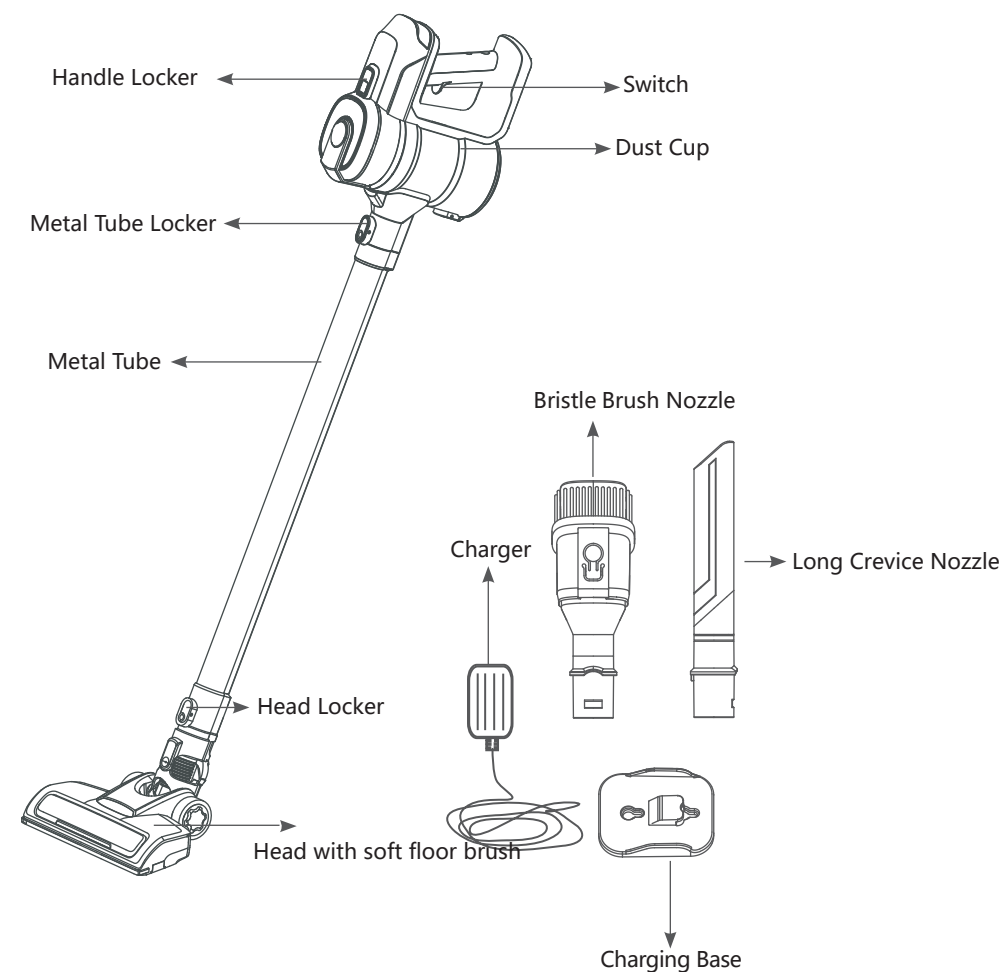
Warning:

- 1, Do not use water, solvents, or polishes to clean the outside of the appliance; wipe clean with a dry cloth;
- 2, Never immerse the unit in water and do not clean in a dish washer.

◆ Remind again: To reduce the risk of fire, electric shock or injury, please observe above instructions.

Instruction of Components

SHARP

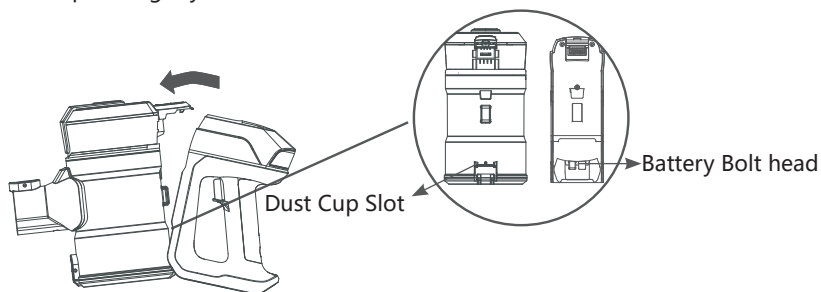


How To Use

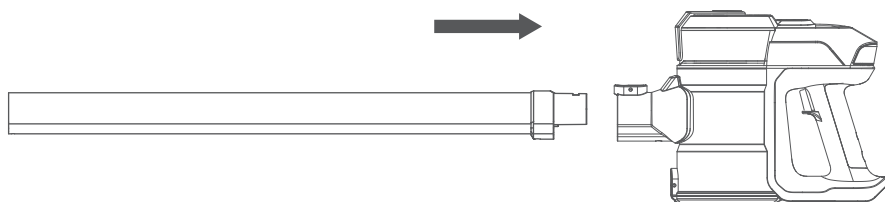
SHARP

I. Use as the stick vacuum cleaner:

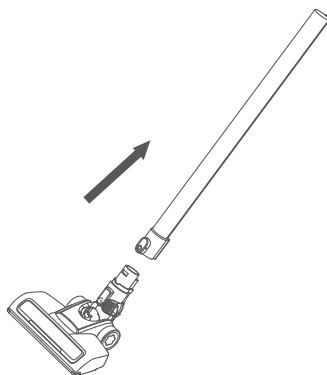
1. Assemble the battery into the dust cup, make sure the battery bolt head is inserted into the dust cup slot rightly as below.



2. Attach the metal tube to the main part as below until hearing the click sound.



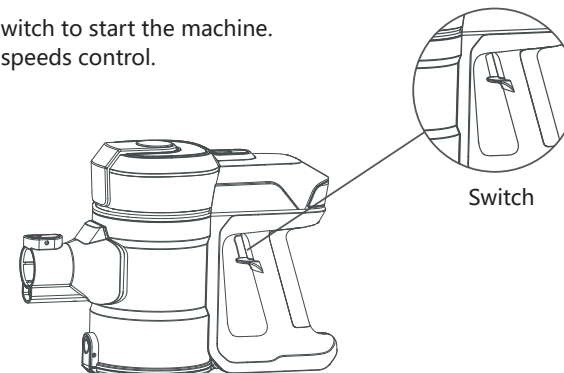
3. Attach the head to the tube as showed below.



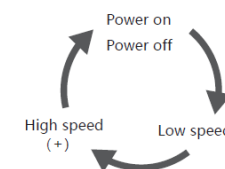
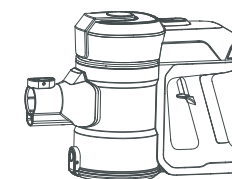
How To Use

SHARP

4. Press the Switch to start the machine.
Two suction speeds control.

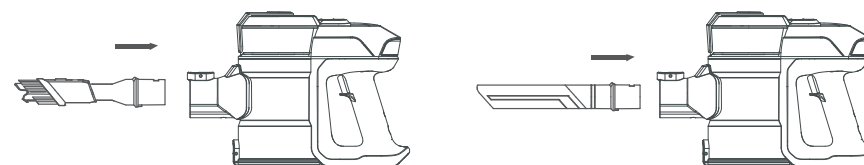


- a. Turn on the switch to the low speed mode.
- b. Press the switch again to change to high speed mode.
- c. Press the switch again to stop the machine.



II. How to use as a hand vacuum:

Insert the accessory (bristle brush nozzle or long crevice nozzle) to the main part as showed below until hearing the click sound



How To Use

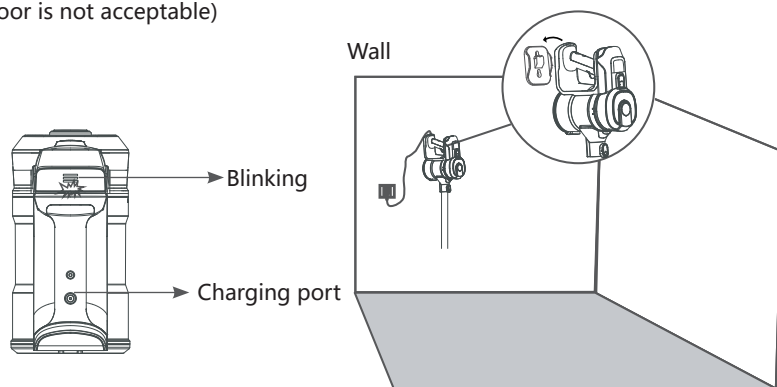
SHARP

III. How to charge:

1) When only one indicator light is blinking, please turn off the appliance, put it back to the charging base, then make sure the plug of the charger has been inserted into the socket. When charging, the indicate lights will become flashing green.

Note: How to use the wall bracket

1. Hang it on the wall with screws
2. Use 3M stickers to make the bracket glued to the wall, for storing the vacuum cleaner (make sure the height is the same as the vacuum cleaner itself, totally hanging away from floor is not acceptable)

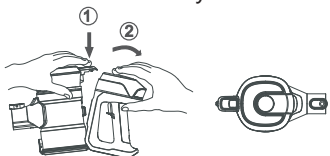


2) It will have 3 green lights on after fully charged.

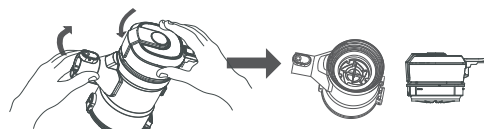


IV. How to Maintain the Filter:

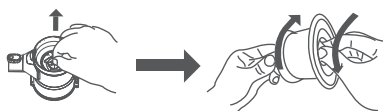
1) Press the handle locker to remove the battery from dust cup.



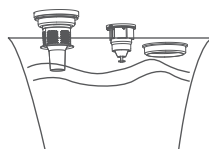
2) Separate and remove the top cover as showed below.



3) Take out the filter case, then take out the filter.



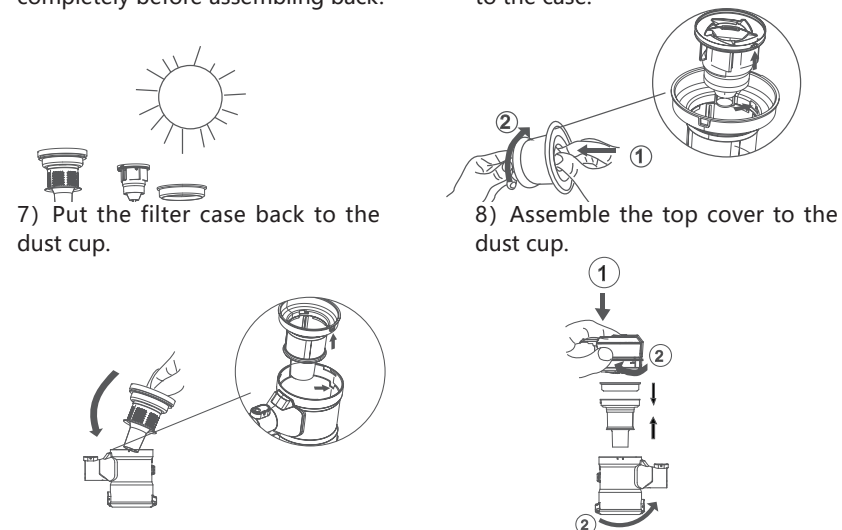
4) Wash the filter case and the filter by water.



Troubleshooting

SHARP

- 5) Please dry the filter and the filter case completely before assembling back.
6) After drying, assemble the filter to the case.



※Troubleshooting:

Suction gets weak	1, Empty the dust cup 2, Check if the dust cup is installed correctly 3, Check if the filter case and the filter are installed correctly 4, Clean the filter
Stop working	1, Charge the vacuum 2, Clean the roller brush and the bearing thoroughly
Battery doesn't hold a charger	1, Check if the plug has been inserted already 2, Check if the socket is useful

※Technical Specification:

Battery	22.2V/2200mAh
Charging time	4-5 hours
Adaptor input	100-240V ~ 50/60Hz
Adaptor output	26V --- 0.45A
Power	150W

SHARP WARRANTY

Congratulations on Your Purchase!

This Sharp vacuum cleaner is warranted against faults in material and manufacture for the 24 months period.

If service is required during the warranty period, please contact your nearest Sharp Approved Service Centre. These repairs would be carried out at no charge to the owner, subject to the conditions specified herein.

This warranty does not extend to defects or injuries caused by or resulting from causes not attributable to faulty parts or the manufacture of the product, including but not limited to, defect or injury caused by or resulting from misuse, abuse, neglect, lack of maintenance, accidental damage, improper voltage, liquid spillage, vermin infestation, software, or any alterations made to the product which are not authorised by Sharp.

Please retain your sales documentation, as this should be produced to validate a warranty claim. This warranty is in addition to and in no way limits, varies or excludes any implied rights and remedies under any relevant legislation in the country of sale.

This warranty does not cover transportation to and from the Sharp Approved Service Centre. Goods presented for repair may be replaced by refurbished goods of the same type rather than being repaired. Refurbished parts may be used to repair the goods. The repair of your goods may result in the loss of user generated data, please ensure that you have saved this data elsewhere prior to repair.

Australian customers: Our goods come with guarantees that cannot be excluded under the Australian Consumer Law. You are entitled to a replacement or refund for a major failure and for compensation for any other reasonably foreseeable loss or damage. You are also entitled to have the goods repaired or replaced if the goods fail to be of acceptable quality and the failure does not amount to a major failure. The criteria of a major failure is defined in the Australian Consumer Law. Should you require any assistance with a major failure please contact Sharp Customer Care.

SHARP

FOR LOCATION ENQUIRIES WITHIN

AUSTRALIA

REGARDING YOUR LOCAL

SHARP APPROVED SERVICE CENTRE

Customer service helplines

1300 742 770

(calling within Australia)

Monday - Saturday, 9am - 6pm

Open Monday to Saturday except on public holidays.

Distributed by

Tempo (Aust) Pty Ltd

PO Box 132 Frenchs Forest NSW 1640 Australia

info@tempo.org

For an electronic copy of this manual, please contact our after sales support centre.

IMPORTANT NOTICE: This warranty applies only to products sold in Australia

SHARP

Sharp Corporation